

Cable tray protection signal codes





Cable tray protection signal codes

A Comprehensive Guide to Tray Cable

Tray cables are a versatile cable with broad usage wherever installation within cable trays or raceways is required. Common applications

[Contact Us](#)



CABLE TRAY SYSTEMS GUIDE

Cable Tray Systems Guide HUBBELL Hubbell Wiring Device-Kellems and Hubbell Premise Wiring are divisions of Hubbell Incorporated, a U.S. headquartered manufacturer with over 130 years of

[Contact Us](#)



What is Shielded Tray Cable and How to Install It?

What is Shielded Tray Cable? A shielded tray cable is a type of electrical cable designed to resist electromagnetic interference and ensure efficient signal transmission.

[Contact Us](#)



The Standard for Cable Trays: How to Ensure Safe

Cable trays are essential components of electrical power and data communication systems that provide safe and reliable routing, support, and protection of cables



Cable tray manual

These documents: ANSI/NEMA VE-1, Metal Cable Tray Systems; NEMA VE-2, Cable Tray Installation Guidelines; and NEMA FG-1, Non Metallic Cable Tray Systems, are an excellent industry resource in

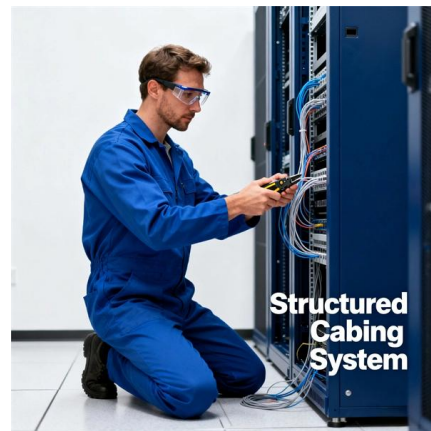
[Contact Us](#)



IEC Standard for Cable Tray: Complete Technical Guide

One of the most recognized frameworks globally is the IEC standard for cable tray systems. This standard ensures safety, durability, and performance

[Contact Us](#)



Practices for grounding and bonding of cable trays

Grounding and bonding of cable trays There are three wiring options for providing an EGC in a cable tray wiring system: An EGC conductor in or on

[Contact Us](#)





Cable Tray Questions , Cable Tray Institute

Our existing cable tray system is heavy bonded and grounded. If this is a code violation, could you refer me to the publication? Answer: Low energy systems may not be required to be grounded for shock

[Contact Us](#)



NEC Article 392: Cable Tray Systems

It provides rules for acceptable wiring methods that can be

[Contact Us](#)

CABLE TRAY INSTITUTE

The Cable Tray Institute (CTI) was founded in 1991 to support the cable tray industry by engaging in research, development, education, and the dissemination of

[Contact Us](#)



ITER Cabling Handbook

This document deals with cables trays, cables and connector installation and segregation, cable trays earthing and E.M.C. directives. These rules shall be applied in the cabling engineering workflow for

[Contact Us](#)



NEC Questions and Answers based on 2017 NEC ®

Q2. What are the Code permitted uses of a Cable tray? A2. Cable trays can be used as a support system for service, feeder, or branch-circuit conductors, as well as

[Contact Us](#)



Understanding Cable Tray Grounding: A

Cable tray grounding is an indispensable aspect of electrical installations that plays a pivotal role in ensuring safety, reliability, and efficiency. It

[Contact Us](#)

Cable Tray Grounding: Power, Instrumentation, and

Where cable tray systems contain only signal and communication circuits that operate at low energy levels, power grounding per NEC Section 318-7 is not appropriate, but cable tray grounding for

[Contact Us](#)



Best Practice Guide to Cable Ladder and Cable Tray Systems

Cable ladder systems and cable tray systems are designed for use as supports for cables and not as enclosures giving full mechanical protection. They are not intended to be used as ladders, walk ways

[Contact Us](#)





Codes and Standards , Cable Tray Institute

This standard specifies the requirements for nonmetallic cable trays and associated fittings designed for use in accordance with the rules of the Canadian Electrical Code (CEC) Part 1, and the National

[Contact Us](#)



Cable tray manual

INTRODUCTION The B-Line series Cable Tray Manual was produced by our technical staff. We recognize the need for a complete cable tray reference source for electrical engineers and designers.

[Contact Us](#)

FAQ , Cable Tray Institute

Cable Tray System FAQs National Electrical Code Question: We have a customer who would like to install the majority of cable tray in his new industrial facility in what I call an "Edge-Wise" orientation.

[Contact Us](#)



Cable Tray Manual: NEC Article 392 Guide

Solid bottom steel cable trays with solid covers and wrap around cover clamps can be used to provide EMI/RFI shielding protection for sensitive circuits.

[Contact Us](#)

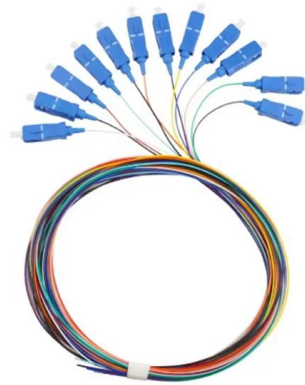




Codes and Standards , Cable Tray Institute

The Cable Tray Institute is making available the current edition of this practical guide for the proper installation of aluminum or steel cable tray systems. These guidelines will be useful to engineers,

[Contact Us](#)



Cable Tray Questions , Cable Tray Institute

Multiconductor cables rated over 600 volts shall be separated from lower voltage cables by a separate cable tray or a solid fixed barrier. Type MC cables can be mixed with lower voltage cables. See NEC

[Contact Us](#)

GUIDE CABLE TRAYS TECHNICAL

Specifies requirements for metal cable trays and associated fittings designed for use in accordance with the rules of Canadian Electrical Code, Part I and the National Electrical Code®

[Contact Us](#)



Guide to cable support systems

A cable support system consists of cable support lengths and system components, such as cable support fittings, support elements, mounting elements and system accessories. The cable support

[Contact Us](#)



Types of Cable Typically Used in Cable Tray

Types of Cable Typically Used in Cable Tray The purpose of a cable tray system is to support, route, and protect cable as part of the cable management system.

[Contact Us](#)



Understanding IEC 61537: A Comprehensive Guide to

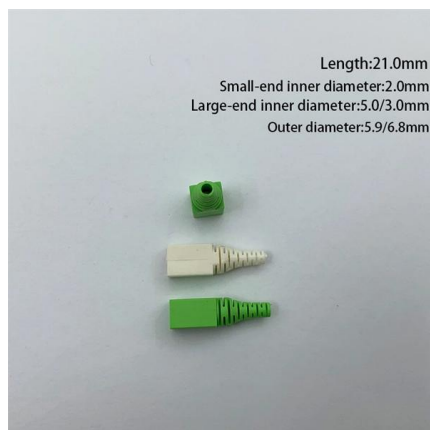
IEC 61537 is a crucial international standard established by the International Electrotechnical Commission (IEC). The Chinese national standard GB/T 21762

[Contact Us](#)

Cable Tray Systems in Ducts, Plenums and Other Air Handling Space

Cable Tray Systems in Ducts, Plenums and Other Air Handling Space The objective of this article to provide clear information as to the use of cable tray in those areas covered by Section 300-22 of the

[Contact Us](#)



Cable Tray Technical Guide A practical guide to product selection and

SOLID-BOTTOM CABLE TRAY Providing additional cable protection, solid-bottom cable tray is sometimes preferred to support and protect numerous small instrumentation and control cables.

[Contact Us](#)



Cable Tray Technical Guide A practical guide to product selection and

Cable tray installed in a hazardous location must contain only those cables that are appropriate for this type of environment as defined in Chapter 5 of the NEC.

[Contact Us](#)



Contact Us

For datasheets, pricing, or custom fiber access solutions, please visit:
<https://frindel.es>