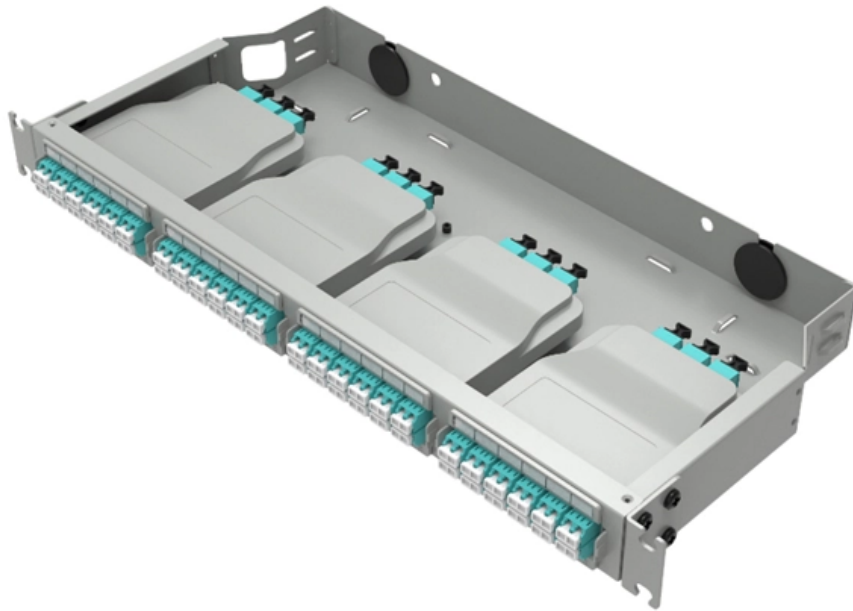


Cable tray price formula chart





Cable tray price formula chart



Wireways and Cable Trays Price Guide 2024, Cost Calculator

Wireways and cable trays price structures are dominated by material costs, which account for 60-70% of total project expenses. Steel wireway systems typically fall in the \$8-20 per foot range,

[Contact Us](#)

Cable Tray Installation Cost per Meter - Price Estimator

Cable Tray Derating Explained: Factors, Formula, and Guidelines Cost Breakdown: Steel Cable Tray Installation Cost Per Meter Steel Tray Price

[Contact Us](#)



Cable Tray Price List , Electrical Works

Cable tray are used in wiring of buildings to support electrical cables and wires that are used to distribute power, controls and communication. The

[Contact Us](#)

Cable Tray Sizing Calculator , IEC 61537 & NEC 392 Guide

Use this cable tray sizing calculator to check fill %, select tray size, and comply with IEC 61537 & NEC 392 with formulas, example and checklist.

[Contact Us](#)



ELECTRICAL INSTALLATION MANHOURS

Electrical installation manhours including wires/cables installation manhour and conduit installation manhours.

[Contact Us](#)



5 Cable Tray Price Secrets Suppliers Hide - Save Costs

Uncover hidden cable tray price factors: wire thickness, zinc coating, steel grades & load tests. Avoid overpaying with these supplier secrets.

[Contact Us](#)



Cable Tray Fill Calculator Online

The Cable Tray Fill Calculator is a valuable tool used in electrical engineering and construction to determine the percentage of a cable tray that is

[Contact Us](#)





How to Get Quick and Accurate Cable Tray Pricing

Learn how to get quick and accurate cable tray pricing for your projects. This guide covers new builds, renovations, and custom systems.

[Contact Us](#)



Cable Tray Fill Calculator

Cable Tray Fill Calculator Plan cable trays confidently with precise area math and presets for compliance. Set target fill, safety margin, and packing assumptions for projects across disciplines.

[Contact Us](#)

Cable Tray Raceway Fill and Load Calculations

On the other hand cable tray supporting system can not be neglected as well since it ensures the integrity of whole cable management installations. The the following

[Contact Us](#)



Cable Tray Size Calculation Guide

This document contains calculations to determine the appropriate size of cable trays between an LV room and electrical room based on the cables being used. It lists

[Contact Us](#)



Comprehensive Guide to Cable Tray Pricing: Cost-Effective Solutions

Explore detailed insights into cable tray pricing, including material options, installation benefits, and long-term value considerations for optimal cable management solutions in commercial and industrial

[Contact Us](#)

MORE CASES PRESENTATIONS



Cable Tray Size Calculation Guide , PDF , Length

The document provides a step-by-step calculation for determining the appropriate size of a cable tray based on a given cable schedule. It calculates the total

[Contact Us](#)

Cable Tray Capacity Calculator

Using the Cable Tray Capacity Calculator, professionals can optimize the layout of cables, reduce the risk of overcrowding, and enhance the overall

[Contact Us](#)



Cable Tray Sizing Calculation Excel Sheet (Size & Weight)

Download Also: The B-Line Cable Tray Manual
This excel sheet contains formulas for calculating cable tray size. Cable tray size includes tray

[Contact Us](#)





Cable Tray Load Calculation and Sizing: Your Easy Guide

Worried about cable tray capacity? Learn simple cable tray load calculation steps. This guide helps you pick the right tray every time, keeping

[Contact Us](#)



CABLE TRAY SYSTEMS GUIDE

The design and cost of the cable tray is greatly affected by this designation. In order to determine the most appropriate and economical system, a class should be selected that reflects the actual total

[Contact Us](#)

Chapter 14 Cable Support systems

Support of cable tray and ladder is typically done in the same fashion as US installations but generally has fewer restrictions as to loading design. Calculations for loading of cable into tray is based upon

[Contact Us](#)



CABLE TRAY SYSTEMS GUIDE

To incorporate this in the tray design the following formula can be used to convert the concentrated static load in pounds to an equivalent uniform load (W) in pounds per foot. That equivalent load can

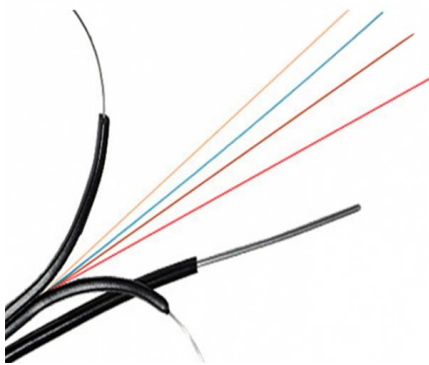
[Contact Us](#)



m.G. CABLE INDUSTRIES

5. Minimum Order Qnantity 50 Mtrs 6. This price list is subject to change without prior notice. *4% Extra discount for out of Mumbai delivery
Discount : MS GI : : HDGI : Powder Coated : Aluminium : FRP :

[Contact Us](#)



Cable Tray Price Per Meter: Market Analysis & Cost

Discover the key factors affecting cable tray price per meter, including materials, demand, and competition. Get cost insights and future pricing trends.

[Contact Us](#)

Cable Tray Cost Comparison

Compare cable tray costs by type, material, and installation. Find the most cost-effective option for your project in this detailed buyer's guide.

[Contact Us](#)



Cable Tray Price List 2021

The document provides a price list for various types and sizes of galvanized and powder coated cable trays, including perforated, ladder, and

[Contact Us](#)



Cable Tray Price List 2024 PDF , PDF , Electrical Wiring

Price List Cable Tray 2024 - Free download as PDF File (.pdf), Text File (.txt) or view presentation slides online.

[Contact Us](#)



Free Cable Tray Fill Calculator , NEC & IEC Compliant Sizing , Shielden

Easily calculate cable tray fill ratios with our free tool. Supports mixed cable sizes, NEC 40% rules, and metric/imperial units. Download your PDF report instantly.

[Contact Us](#)



Cable Tray Fill Calculator

Calculate cable tray fill percentage, cable area, or tray area from any two inputs with area units in mm², cm², m², in², or ft² and show steps. Cable Tray

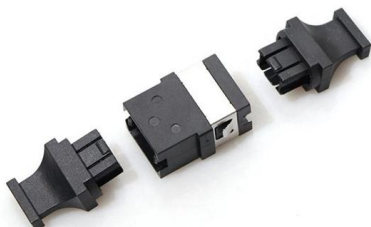
[Contact Us](#)



Cable Tray Fill Calculator

Cable Tray Fill Calculation Formula The fundamental formula for calculating cable tray fill is: $\text{Fill Area} = \frac{\text{Sum of Cable Cross-Sectional Areas}}{\text{Allowable Fill Area}}$ Cable Cross-Sectional Area: For round

[Contact Us](#)





Contact Us

For datasheets, pricing, or custom fiber access solutions, please visit:
<https://frindel.es>