

Cable tray power control layering





Overview

This article provides a comprehensive, technical deep dive into cable tray layout design, covering cable classification, routing principles, segregation standards, earthing practices, and recommended layouts that meet international standards like IEC 61508, IEC 60364, and IEEE. Cable tray (or cable ladder) systems are a popular alternative to electrical conduit systems, as they have an outstanding record for dependable service, design flexibility and cost savings in commercial and industrial applications. In industrial settings, electrical and instrumentation (E&I) cable trays or bridge racks play a critical role in organizing and supporting power, control, and signal cables across facilities. An effective layout ensures safety, minimizes interference, reduces maintenance time, and keeps the overall maintain spacing or to keep cables in place when the tray is ect the minimum bend ra-dius for cables as they exit the bottom of the cable tray. The mechanical and electrical characteristics, tests, certifications, overall quality management, recommendations mentioned in this technical guide only apply to our own cable management ranges and cannot under any circumstances be transposed to si osure, overheating or.



Cable tray power control layering



Complete cable tray manual for electrical engineers and

Cable trays simplify the wiring system design process and reduces the number of details. Cable tray wiring systems are well suited for computer aided design

[Contact Us](#)

IEC Standard for Cable Tray: Complete Technical Guide

It applies to cable trays made of steel, stainless steel, aluminum, or other metallic materials. The standard ensures these systems can handle the

[Contact Us](#)



Cable Tray Technical Guide A practical guide to product selection and

In designing supports for a cable tray system, consideration should be given to the loads associated with future cable additions and any additional loading that may be applied to the cable tray system (e.g.,

[Contact Us](#)

Annex I

Signal and power cables are routed in different cables trays according to the type of signal or power. ITER has based its cable distribution on the IEC 61000-5-2 recommendations for Earthing and



Mastering Cable Tray Installation , Step-by-Step Guide for a Seamless

Learn how to install cable trays correctly. Get the ultimate step-by-step guide on setting up a seamless and reliable cable management system.

[Contact Us](#)



Good practice rules for electromagnetic compatibility

They apply to power and to communication conductors, and to both where they have to cohabit. Essential components in the installation, metal cable

[Contact Us](#)



Cable Tray Size Calculation for Project Engineers

Cable tray size calculation ensures safe, efficient cable management for power, control, and data installations with future scalability

[Contact Us](#)





Code Corner: 2023 NEC Article 690.31 (C) and (C) (2)

The updated section 690.31 (C) now aligns with the Code's broader language (like Article 392), allowing these smaller conductors and detailing how

[Contact Us](#)



Types of Cable Trays: Benefits and Uses

Cable trays are support structures used in the electrical wiring of buildings and other structures, designed to secure insulated electrical cables

[Contact Us](#)

B-Line series Cable Tray Design Considerations

A properly designed and installed cable tray system will provide outstanding reliability for a facility's control, communication, data, instrumentation and power systems cabling & wiring.

[Contact Us](#)



A Guide to Installing and Supporting Electrical Cable Trays

A professional guide to installing electrical cable tray systems per NEC Article 392. Covers support, securing cables, and fill calculations.

[Contact Us](#)



100+ Essential Questions Answered About Cable Trays:

Discover over 100 expert answers about cable trays, covering key topics like material selection, load capacity, installation methods, and maintenance.

[Contact Us](#)



Cable Tray Wiring Layout , Information by Electrical Professionals for

So, my two main questions would be: 1) Can I stack cables within the tray? 2) How do I avoid interference between Power and Communication Cables? Any advice would be greatly

[Contact Us](#)

Cable Tray SHIB NAL

Cable trays are not raceways, but they are treated as a structural component of a facility's electrical system. Cable trays are a part of a planned cable management system to support, route, protect and

[Contact Us](#)



Designing Cable Tray Layouts for Industrial Facilities

Discover expert tips for Electrical Draftsmen to design effective cable tray layouts in industrial facilities.

[Contact Us](#)



What Is A Cable Tray? 5 Types Of Cable Trays

A cable tray is a structural system used to support and manage electrical cables in various settings, such as industrial, commercial, and residential environments. It provides a pathway for safely routing

[Contact Us](#)



Wall Mount Cabinet Server Racks



Cable Tray Technical Guide A practical guide to product selection and

SOLID-BOTTOM CABLE TRAY Providing additional cable protection, solid-bottom cable tray is sometimes preferred to support and protect numerous small instrumentation and control cables.

[Contact Us](#)

Types of Cable Trays - Purpose, Advantages,

Cable tray is alternatives to wire ways and electrical conduits, which completely enclose cables. Study types of cable trays, purpose, advantages.

[Contact Us](#)



A Comprehensive Guide to Communication, Power, and Control

That's why understanding the correct method for laying communication, power, and control cables on a shared cable tray is fundamental for every electrical, instrumentation, or

[Contact Us](#)

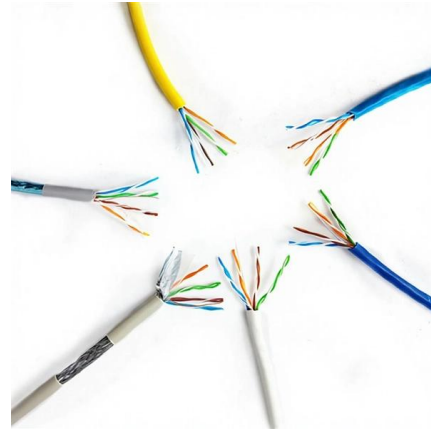




Best Practice Guide to Cable Ladder and Cable Tray Systems

This guide covers cable ladder systems, cable tray systems, channel support systems and associated supports intended for the support and accommodation of cables and possibly other electrical

[Contact Us](#)



Core Principles for Electrical and Instrumentation Cable

Layered Separation: Strong current and high-voltage cables are positioned apart from low-current, low-voltage instrumentation cables. Layered separation reduces

[Contact Us](#)

GUIDE CABLE TRAYS TECHNICAL

The cable management system's electromagnetic performance characterises its ability to protect its cables from external electromagnetic disturbance; if this is controlled, the data carried by the cables

[Contact Us](#)



Power Plant :: Products :: Cable Tray

A ladder type cable tray offers a high amount of ventilation to heat producing cables such as power cables. APP's Weld-on and Bolt-on Cable Trays are synonymous

[Contact Us](#)

Cable Tray Layout & Section (Electrical) ,



PMG Engineering

Explore the essentials of cable tray layout and section design in electrical systems, ensuring optimal cable management and support.

[Contact Us](#)



Guide to cable support systems

The mesh cable trays are suitable for the installation of power cables and cables in various areas of application. The grid spacings mean that cables can be inserted and run out in various directions.

[Contact Us](#)

Contact Us

For datasheets, pricing, or custom fiber access solutions, please visit:
<https://frindel.es>