

Cable tray pile foundation location





Cable tray pile foundation location



Westinghouse AP1000 Design Control Document Rev. 19

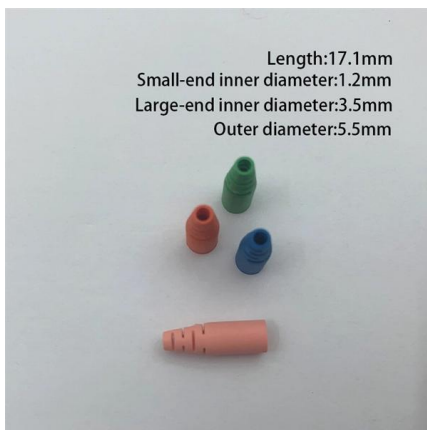
Cable ties are provided at spacing greater than 4 feet, thereby permitting cable movement within the trays. The damping ratio used for the cable tray system is dependent on the level of seismic input

[Contact Us](#)

Anixter - Wire and Cable, Networking, Security and Utility Power

Anixter - Wire and Cable, Networking, Security and Utility Power Solutions

[Contact Us](#)



Industrial-Plant-Foundations

Industrial pipe racks typically support pipes, power cables and instrument cable trays in petrochemical, chemical, paper mills and power plants. Occasionally, pipe racks may also support mechanical

[Contact Us](#)

Understanding Cable Tray Grounding: A

Cable tray grounding is an indispensable aspect of electrical installations that plays a pivotal role in ensuring safety, reliability, and efficiency. It

[Contact Us](#)



Best Practice Guide to Cable Ladder and Cable Tray Systems

This guide covers cable ladder systems, cable tray systems, channel support systems and associated supports intended for the support and accommodation of cables and possibly other electrical

[Contact Us](#)

CABLE TRAY INSTALLATION DETAILS WITH

Main keywords for this article are Cable Tray Installation Details With Pictures, Cable Tray Installation Details DWG, Cable Tray Installation Drawings, Cable Tray

[Contact Us](#)



Cable Tray Sleeper Design Details , PDF , Length

The document provides details on the design of a cable tray mechanical support system, including specifications for cable tray sleepers, impeded steel plates, and

[Contact Us](#)



B-Line series Cable Tray Design Considerations

As an industry leader in cable tray, Eaton offers one of the widest ranges of cable management solutions available in the market today with its B-Line series portfolio. With unmatched quality and service, we

[Contact Us](#)



Cable Tray Technical Guide A practical guide to product selection and

A practical guide to product selection and installation This guide for engineers and installers has been developed by ABB as a practical reference regarding cable tray characteristics, installation, and

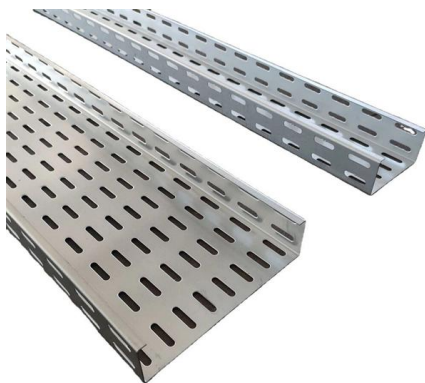
[Contact Us](#)



Transmission Tower Reinforced Concrete Pile Cap Foundation

Transmission Tower Reinforced Concrete Pile Cap Foundation Transmission Tower Reinforced Concrete Pile Cap Foundation The purpose of a transmission line tower is to support conductors

[Contact Us](#)



Method Statement installation of Cable Trays and Ladders

This method statement covers the site installation of the cable tray & ladders and the requirements of checks to be carried out.

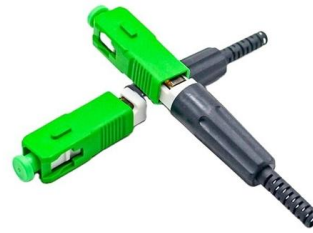
[Contact Us](#)



Generate cable bridge pile function - Candela

As shown in the figure below, Red represents the existing pile foundation of the Rack, while Green represents the automatically generated pile foundation of the Cable tray. As shown in the figure

[Contact Us](#)



B-Line series Cable Tray Design Considerations

Cable tray support locations are defined by the NEMA VE-1 and VE-2 Manufacturing & Installation Standards, which specify the requirements for cable tray systems designed for use in accordance

[Contact Us](#)

Cable Tray Systems: Requirements and Best Practices

Comprehensive guide to cable tray systems requirements: tray types, materials, loading, supports, bonding, routing, and best practices for safe electrical cable management.

[Contact Us](#)



Technical Specification for Cable tray installation and cable laying work

Approval of IPR shall be obtained for site preparation and marking the cable tray routes and locations of cable tray support before proceeding with the erection and installation work.

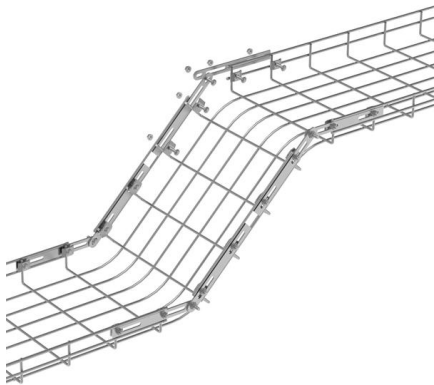
[Contact Us](#)



Cable Tray Technical Guide A practical guide to product selection and

Cable Tray Technical Guide A practical guide to product selection and installation This guide for engineers and installers has been developed by ABB as a practical reference regarding cable tray

[Contact Us](#)



Precautions for Cable Tray Installation

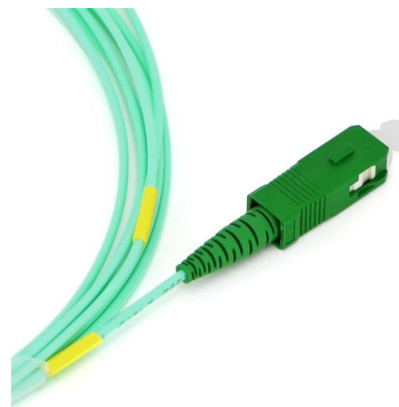
Cable Tray Installation Guide The correct installation of cable trays is crucial for establishing a reliable and efficient cable system. It ensures that cables are

[Contact Us](#)

TRANSMISSION AND SUBSTATION FOUNDATIONS

The CHANCE® Instant Foundation® system installs in almost any type of terrain including, flood plains, glacial till, sand, swamps and bogs. Helical piles offer a logical choice where soft soil conditions will

[Contact Us](#)



Beama Best Practice Guide , Installation Of The System , Cable

Cable ladders and cable trays should be mounted far enough off the floor or roof to allow the cables to exit through the bottom of the cable ladder or cable tray.

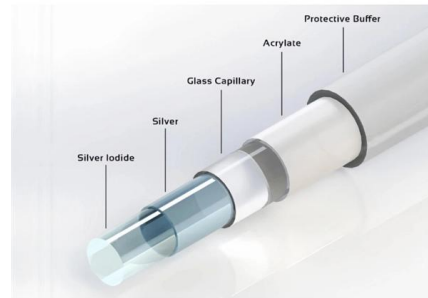
[Contact Us](#)



CABLE TRAY SYSTEMS GUIDE

CONCENTRATED STATIC LOADS: Some applications may require the cable tray to support the weight of a single, dead object in addition to the cable loads. Specifications typically require this to be

[Contact Us](#)



50KW modular power converter



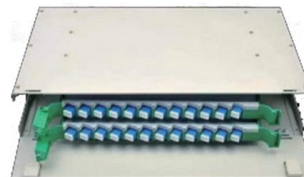
Cable tray

In the electrical wiring of buildings, a cable tray system is used to support insulated electrical cables used for power distribution, control, and communication. Cable

[Contact Us](#)

Guide to cable support systems

Four different mesh cable tray types are available, depending on the requirements, area of application and cable quantity. The innovative Magic connection system of the GRM and G-GRM mesh cable



[Contact Us](#)



Cable Tray Spacing Standards for Installation and Safety

The Importance of Cable Tray Spacing in Electrical Infrastructure Cable tray spacing is a critical aspect of electrical infrastructure, influencing both

[Contact Us](#)



Ultimate Guide to Pile Foundation Construction: Best

Introduction Pile foundation construction is critical for high-rise buildings and infrastructure projects. Proper planning, execution, and quality

[Contact Us](#)



IEEE Guide for the Design and Installation of Cable Systems in

Abstract: The design, installation, and protection of wire and cable systems in substations are covered in this guide, with the objective of minimizing cable failures and their consequences.

[Contact Us](#)

Cable Tray Bridge Construction Method , PDF , Deep

This document outlines the method statement for building a cable tray river crossing for a solar power plant in Gorontalo. It involves installing pile foundations using a



[Contact Us](#)

Contact Us

For datasheets, pricing, or custom fiber access solutions, please visit:
<https://frindel.es>