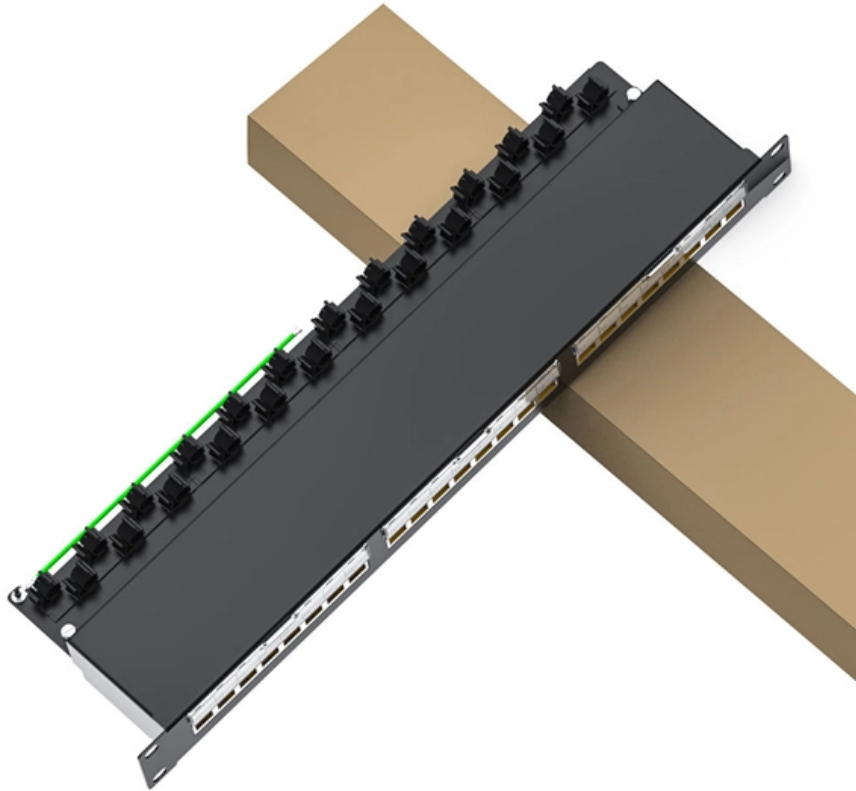


Cable tray distance from ceiling





Cable tray distance from ceiling



Cable Support Distances

This provides distances for cables based on their diameter and cable type. Prysmian was instrumental in providing this information and an extract is provided in this document.

[Contact Us](#)

Cable Tray Technical Guide A practical guide to product selection and

Cable Tray Technical Guide A practical guide to product selection and installation This guide for engineers and installers has been developed by ABB as a practical reference regarding cable tray

[Contact Us](#)



Cable Tray and Conduit Coordination in Ceilings

AS/NZS 3000 requires 25 mm separation from water pipes, 50 mm from telecom cables, and 300 mm from hot pipework. This design memo covers cable tray support spacing, fill limits, and

[Contact Us](#)



CEC Code Rule 12-2200 CT Clearances , PDF

Cable trays shall be permitted to extend vertically through floors in dry locations, if provided with fire stops in accordance with Rule 2-128 and if totally enclosed



B-Line series Cable Tray Design Considerations

For ladder or ventilated trough trays, the total sum of the cross-sectional areas of all the cables to be installed in the cable tray must be equal to or less than the allowable cable area for the tray width, as

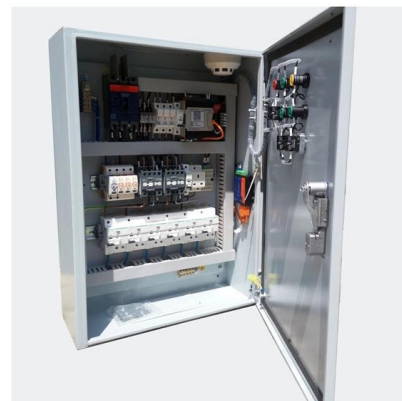
[Contact Us](#)



Cable Tray Support Spacing: Key Guidelines Explained

Explore the essential cable tray support spacing requirements for safe and efficient installations. Learn NEC guidelines for perforated, ladder, and wire

[Contact Us](#)



SC connector  X 12

Telecommunications Horizontal Cabling and Support Structure

The maximum horizontal distance shall be 76-meters (250 ft). For ease of cable installation and future expansion in hallway or major distribution routes, cable trays are the preferred method for distributing

[Contact Us](#)



CABLE MANAGEMENT SYSTEMS CABLE TRAYS & ACCESSORIES

Fiberglass Reinforced Plastic (FRP) Cable Tray / Ladder SFSP Fiberglass Reinforced Plastic (FRP) Cable Management Systems are designed, manufactured, and tested to be installed in most harsh

[Contact Us](#)



Guide to cable support systems

Universal systems for cable support structures are used for small loads. The systems are suspended from the ceiling with threaded rods, stand-off brackets allow raised floor mounting of cable trays,

[Contact Us](#)

Cable tray installation requirements-ZM Technology Co., Ltd.

(7) The cable tray should be more than 2.2 meters above the ground, the distance between the top of the bridge and the ceiling or other obstacles should not be less than 0.3 meters,

[Contact Us](#)



Cable Tray

Cable trays with a rail height of 60 mm, in widths of 100 to 300 mm (RS 60.100 OV - RS 60.300 OV) are used for ceiling and wall mounting. The cable trays are

[Contact Us](#)



GENERAL INFORMATION

Cable trays or raceways often provide a convenient, safe and efficient method of fiber optic cable installation. Trays can be installed in ceilings, below floors and in riser shafts. When installing fiber

[Contact Us](#)



910533-3_EN

Cable tray types, supports (types and spacing) and securing systems are selected and designed taking into consideration the weight of the cables including reserves, increased by a dynamic shock load of

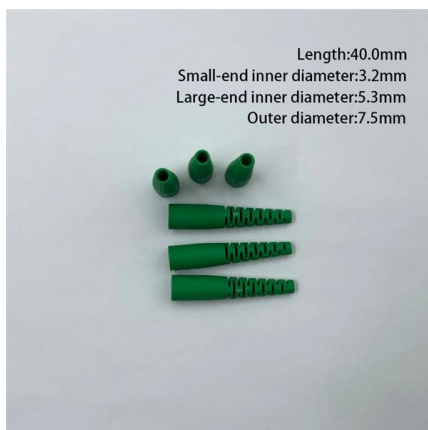
[Contact Us](#)



CABLE

Few people would consider cable tray as having any sort of aesthetic appeal, but far from concealing cable tray in false floors and ceilings, modern buildings sometimes deliberately show

[Contact Us](#)



Cable Tray SHIB NAL

Securing cables will maintain proper spacing between cables, keep cables in the trays, and confine the cables to specific locations within trays. Those designing and installing the system must determine

[Contact Us](#)



Annex I

The minimum distance from the trench floor to the lower cable tray must not be less than 200 mm and cable tray must not be located deeper than 400 mm from the trench ceiling, as shown in Fig. 5.7.2.

[Contact Us](#)



GUIDE CABLE TRAYS TECHNICAL

NEMA VE 1-2017 Specifies requirements for metal cable trays and associated fittings designed for use in accordance with the rules of Canadian Electrical Code, Part I and the National Electrical Code®

[Contact Us](#)



Cable Support Distances

Cable Support Distances Although BS 7671 touches on the subject of cable supports, it does not detail specifically what these support distances should be. Section 522.8 (Other Mechanical Stresses (A))

[Contact Us](#)



Cable Tray Spacing Standards for Installation and Safety

Top Clearance: The top of the cable tray should maintain a minimum distance of 0.3 meters from the ceiling or any other obstructions. Tray Width: The width of the cable tray should be

[Contact Us](#)





Cable Tray Technical Guide A practical guide to product selection and

Cable tray length is selected based on the load to be supported, the distance between the supports (also referred to as the span), and handling and installation constraints.

[Contact Us](#)



Cable tray installation , Information by Electrical Professionals for

Cable tray Cable tray Most of the tray will be installed above network racks, and there will be a few crossover points that will pass over the walkway to connect the rows . We are >8' AFF

[Contact Us](#)

Guide to cable support systems

Four different mesh cable tray types are available, depending on the requirements, area of application and cable quantity. The innovative Magic connection system of the GRM and G-GRM mesh cable

[Contact Us](#)



Best Practice Guide to Cable Ladder and Cable Tray Systems

This guide covers cable ladder systems, cable tray systems, channel support systems and associated supports intended for the support and accommodation of cables and possibly other electrical

[Contact Us](#)



Cable Tray Dimensions and Specifications as per NEC

Many electrical systems employ cable trays. They route cables safely & efficiently. NEC defines minimum cable tray size & electrical installation

[Contact Us](#)



Contact Us

For datasheets, pricing, or custom fiber access solutions, please visit:
<https://frindel.es>