

Cable tray cover shape





Overview

Hat-shaped covers are available with a flat solid top or a corrugated ventilated top and in 2" or 4" height. Usually, it has another section that encloses the cables within the tray called a "cover" or "lidding" section. Cable tray covers are protective enclosures that shield cables from environmental hazards while ensuring compliance with safety standards like NEC 392. These include power, armored, control, instrumentation, telecommunication, and fiber optic cables.



Cable tray cover shape



Smart Cable Tray Covers: A Buyer's Guide to Material,

Explore cable tray cover types, materials & standards to optimize safety and system ROI. Read more in our expert guide.

[Contact Us](#)

Types of Cable Trays: Ladder, Perforated, Basket, Solid

Cable trays support insulated electrical cables in industrial and commercial settings. There are several types of cable trays, including ladder,

[Contact Us](#)



Cable Tray Covers

Protect your cables with Spina Group cable tray covers. Available for ladder and perforated trays in HDG, stainless or aluminium -- ideal for indoor and outdoor use.

[Contact Us](#)

Pentax Ferro Incorporate

Cable trays are an assembly of formed metal sections, connected by splice plates to provide an economical and rigid structure for supporting a wide range of electric

[Contact Us](#)



Cable Tray Types & Installation Guide , Enagalxy

Learn cable tray types, uses, and installation basics to support safe, efficient electrical and water supply pipe systems in your project.

[Contact Us](#)

Types of Cable Trays and Their Applications

Cable trays are an essential component in modern infrastructure, having numerous use cases in various industries. In this blog, we will discuss the

[Contact Us](#)



Strengthen door locks
More durable and aesthetically pleasing



Grounding screw
More aesthetically pleasing and safer



Removable hinges
Make operation more convenient



Sealing strip
Dustproof and waterproof



Cable Tray Cover Choosing for Safety, Protection, and

Learn the comprehensive guide to cable tray cover choosing for different environments, ensuring safety, protection, and aesthetic appeal.

[Contact Us](#)



Cable Tray Cover , 100mm & 300mm Available , Metsec

We provide a range of closed and ventilated cable tray covers available in a variety of finishes, as well as extra cable tray cover clips and clamps.

[Contact Us](#)



Cable Tray Cover Fabrication

Cable Tray Cover Fabrication While many cable trays remain uncovered, those that run under or along the floor require a strong and sturdy cable tray cover for

[Contact Us](#)



Cover for cable trays

Cover for mini cable tray, RD in various widths, material thickness 0.75 mm, cover overlying
Cover for distribution cable tray, RDSV in various widths, material thickness 0.75 - 0.8 mm, fastening with

[Contact Us](#)



Cable Tray and its types & Sizes

A cable tray is a type of a containment used to support insulated electrical cables used for power distribution, control, and communication.

[Contact Us](#)





Cable Tray Dimensions Guide: Standard Sizes, Tray

Standard Cable Tray Dimensions Cable tray dimensions are not chosen at random. Across most global markets, they follow well-established

[Contact Us](#)



Types of Cable Trays - Advantages, Applications and Sizes

Explore the types of cable trays, their advantages, applications, and standard sizes. Learn how they improve cable management and support various industries.

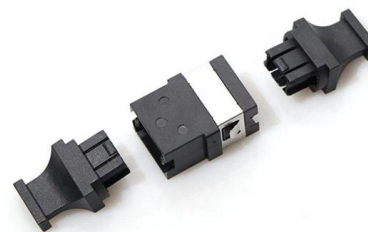
[Contact Us](#)



Cablofil CP150GS Pre-Galvanised Steel Wire Cable Tray Cover

Pre-galvanised steel wire cable tray cover for protecting cables in industrial environments. Installed using cover clamps and designed to deliver corrosion resistance and halogen free performance.

[Contact Us](#)



7 Types of Cable Trays: How to Choose the Right One

Cable tray systems are engineered support structures designed to route, support, and protect insulated electrical cables used for power distribution,

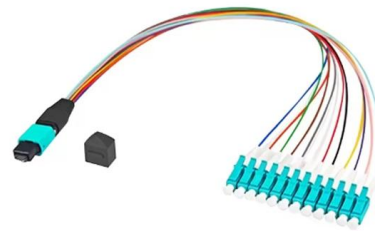
[Contact Us](#)



Cable Tray Cover Types: Designs, Materials & Selection

A complete guide to cable tray cover types: Compare 9+ designs, material specifications (NEMA/IEC), selection factors & maintenance best practices.

[Contact Us](#)



Cable Tray , EAE Electric , Medium & heavy duty cable

Explore EAE Electric's medium and heavy-duty cable tray systems designed for optimal cable management and durability in industrial and commercial applications.

[Contact Us](#)

11 Types of Cable Tray Covers and How to Choose It New

That is, it covers the top section of the cable tray. In this guide, you will learn about the different types of cable covers and how to choose a perfect option.

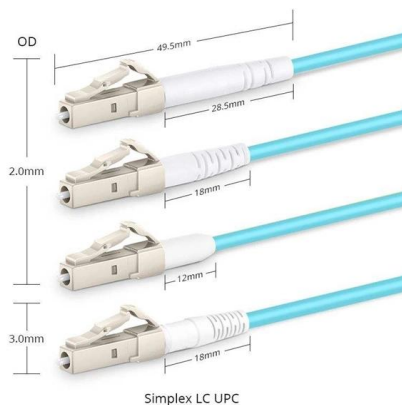
[Contact Us](#)



Types of Cable Trays: Ladder, Perforated, Basket, Solid

Explore all types of cable trays--ladder, perforated, basket, solid, and channel. Learn their uses, materials, pros, cons, and key differences.

[Contact Us](#)





Types of Cable Trays - Purpose, Advantages,

Cable tray is alternatives to wire ways and electrical conduits, which completely enclose cables. Study types of cable trays, purpose, advantages.

[Contact Us](#)



Cable Tray Size and Dimensions: How to Choose the

Learn how to calculate the perfect cable tray size and dimensions for your electrical project. This guide covers load capacity, fill ratios, and industry

[Contact Us](#)

Cable Tray Types and Sizes

Explore various cable tray types and sizes for electrical installations. Learn about ladder, perforated, solid-bottom, wire mesh, and channel

[Contact Us](#)



Cable Tray Covers

Cable tray covers are essential parts that keep cables contained and protected in a variety of commercial and industrial settings. A variety of premium covers from

[Contact Us](#)



Cable Tray Technical Guide A practical guide to product selection and

SOLID-BOTTOM CABLE TRAY Providing additional cable protection, solid-bottom cable tray is sometimes preferred to support and protect numerous small instrumentation and control cables.

[Contact Us](#)



Cable Tray Dimensions Guide: Standard Sizes, Tray

Explore standard sizes by tray type, understand width and depth limits, and see how to calculate and choose compliant cable tray sizes for real projects.

[Contact Us](#)

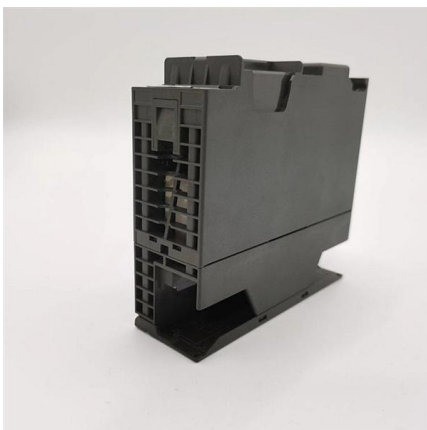
MP Husky Cable Tray Catalog.pdf

Hat-shaped covers are designed to protect installations where the cables extend above the upper flanges of the tray. Hat-shaped covers are available with a flat solid top or a corrugated ventilated top

[Contact Us](#)

Ordering information

NCL	1	2	3	4	5	6
Model	SP120M1	SP120M2	SP160M1	SP160M2	SP120M3	SP120M4
Product name	Patch Panel	Patch Panel	Patch Panel	Patch Panel	Patch Panel	Patch Panel
Illustration						
HU	1	2	4	1	2	4
Maximum number of rows	144	288	576	144	288	576
Product size (including modules and accessories)	482.0(19.7714) mm	482.0(19.7714) mm	482.0(19.7714) mm	482.0(19.7714) mm	482.0(19.7714) mm	482.0(19.7714) mm
Standard color code	RAL9005	RAL9005	RAL9005	RAL9005	RAL9005	RAL9005



Cable Tray Covers

Hat-shaped covers are designed to protect installations where the cables extend above the upper flanges of the tray. Hat-shaped covers are available with a flat solid top or a corrugated ventilated top

[Contact Us](#)



Types of Cable Tray Covers and How to Choose It

Explore various types of cable tray covers and learn how to choose the right one for your project. Improve safety, durability, and cable protection today.

[Contact Us](#)



Contact Us

For datasheets, pricing, or custom fiber access solutions, please visit:
<https://frindel.es>