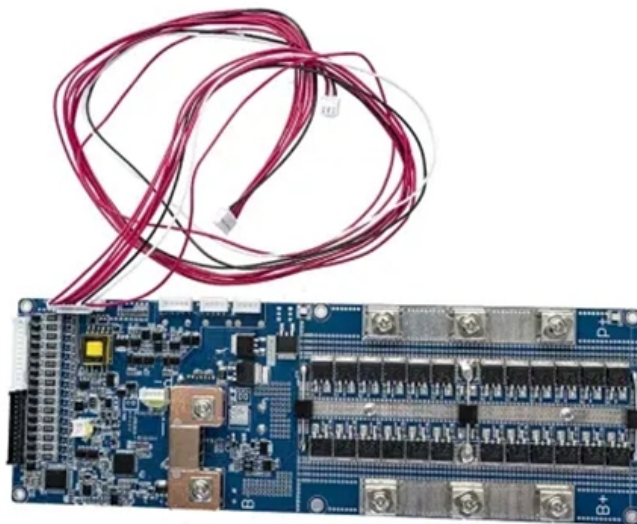


Cable tray climbing and starting techniques





Cable tray climbing and starting techniques



Cable Tray Installation

Whether you're building a commercial setup or upgrading an industrial plant, proper cable tray installation ensures neat wiring, safe access, and easy maintenance. But before you lay the first tray

[Contact Us](#)

Method Statement installation of Cable Trays and Ladders

This method statement covers the site installation of the cable tray & ladders and the requirements of checks to be carried out.

[Contact Us](#)



Climbing Energized Cable Trays NEC OSHA and Safety

Is climbing in energized cable trays safe and legal? Explore NEC, OSHA, industry standards, and best practices for electrical safety.

[Contact Us](#)

Cable Tray Trunking & Ladder Installation Method for

The purpose of this article is to define the sequence and methodology for the installation of electrical cable trays, cable trunking, cable raceways and boxes,



Beama Best Practice Guide , An Introduction , Cable Tray , CMW

A practical guide for the proper and safe installation of cable ladder systems, cable tray systems, channel support systems and associated supports.

[Contact Us](#)



Best Practice Guide to Cable Ladder and Cable Tray Systems

This guide covers cable ladder systems, cable tray systems, channel support systems and associated supports intended for the support and accommodation of cables and possibly other electrical

[Contact Us](#)



Method Statement for Installation of Cable Tray or Trunking

On completion of cable tray/ ladder installation including fittings, inspect exposed finish. Remove burrs & construction debris and repair damages finishes

[Contact Us](#)



Best practice guide to cable ladder and



The following recommendations are intended to be a practical

[Contact Us](#)



Overhead Cable Management: Cable Runway vs. Cable

Overhead Cable Management Products from Enconnex Enconnex has partnered with Liberty to deliver best-in-class cable runway and wire mesh

[Contact Us](#)

Full guide of cable tray installation and sizing

Full guide of cable tray installation and sizing - Part 2 How to Become a Network Cabling Technician Training , Low Voltage , Part 1 , Bridgecable

[Contact Us](#)



CT-1-Cable Ladder Basics Training

Learn cable tray basics: steel, aluminum, and non-metallic cable tray materials and applications

[Contact Us](#)

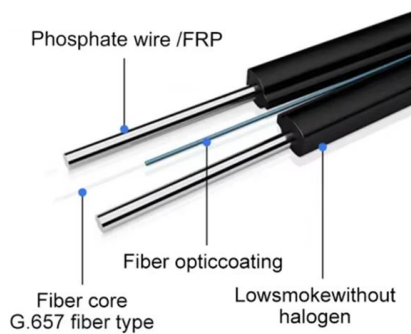




CABLE TRAYS GENERAL INFORMATION AND

Using cable trays as walkways can cause personal injury and also damage cable tray and installed cables. Performances of cable tray systems are dependent on

[Contact Us](#)



Cable routing , Tips for proper cabling , Simply explained

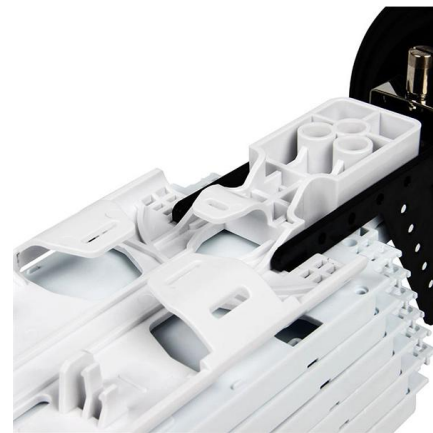
Keep an overview and avoid cable clutter with our practical cable guides. Find out here how you can optimise your cable management.

[Contact Us](#)

CABLE TRAY SYSTEMS GUIDE

The Ladder Tray features light, rugged, tubular steel construction. It is designed for mechanical support and strain relief in long runs of cable and creates a smooth gradual bend for cable. Rail and stringer

[Contact Us](#)



Best Practices for Installing Cables in Trays

Learn the best practices for installing cables in trays. This guide covers essential steps, technical requirements, and key details

[Contact Us](#)



Best Practice Guide to Cable Ladder and Cable Tray

Cable ladder and cable tray systems The following recommendations are intended to be a practical guide to ensure the safe and proper installation of

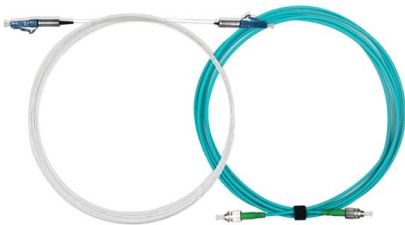
[Contact Us](#)



Cable Tray SHIB NAL

Cable trays are not raceways, but they are treated as a structural component of a facility's electrical system. Cable trays are a part of a planned cable management system to support, route, protect and

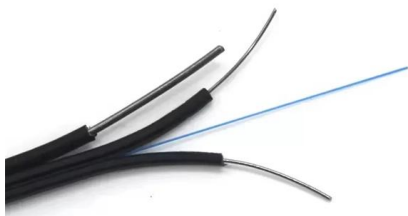
[Contact Us](#)



Level 2 EFK Manual

Made from perforated sheet steel, the standard cable tray consists of a simple flat tray with a turned up edge. It is available in widths varying from 50mm to 900mm and is most suitable for the installation of

[Contact Us](#)



Lead Climbing Basics: How to Lead Climb , REI Expert

Read about the basics of lead climbing, including what lead climbing entails, how to learn to do it and what gear is required.

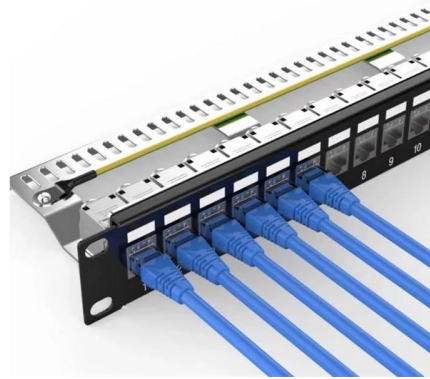
[Contact Us](#)



Complete cable tray manual for electrical engineers and

How to design cable tray? Most projects are roughly defined at the start of cable tray design. For projects that are not 100 percent defined before design start, the cost

[Contact Us](#)



CABLE TRAY ON A ROLL

We didn't believe it at first, but then a series of 15-meter cable trays showed up all coiled up. The Rollatray from Metpro was originally designed for installation under raised flooring systems.

[Contact Us](#)

Installation Of Cable In Cable Trays: NEC, Safety

Installation of Cable in Cable Trays ensures proper routing, cable management, NEC compliance, grounding, fire safety, and load capacity.

[Contact Us](#)



Guide to Seated Cable Row: Techniques and More

The seated cable row develops the muscles of the back and the forearms. It's often used in a beginners weight training program for the upper body.

[Contact Us](#)

Metal Cable Tray Installation Guidelines ,



Cable Tray Institute

The Cable Tray Institute is making available the current edition of this practical guide for the proper installation of aluminum or steel cable tray systems. These guidelines will be useful to engineers,

[Contact Us](#)



Cable Management Systems Explained for Your Needs

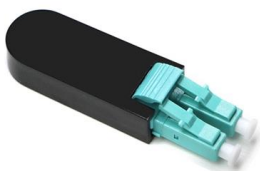
Explore the best cable management systems for safe, scalable cable routing -- including trays, ladders, trunking, and more.

[Contact Us](#)

Climbing Moves, Holds, & Technique: The Beginner's

New to climbing? Our beginner's guide to climbing moves, holds, & technique provides the information you need to improve today.

[Contact Us](#)



Best Practice Guide to Cable Ladder and Cable Tray Systems

This publication is intended as a practical guide for the proper and safe* installation of cable ladder systems, cable tray systems, channel support systems and associated supports.

[Contact Us](#)



Contact Us

For datasheets, pricing, or custom fiber access solutions, please visit:
<https://frindel.es>