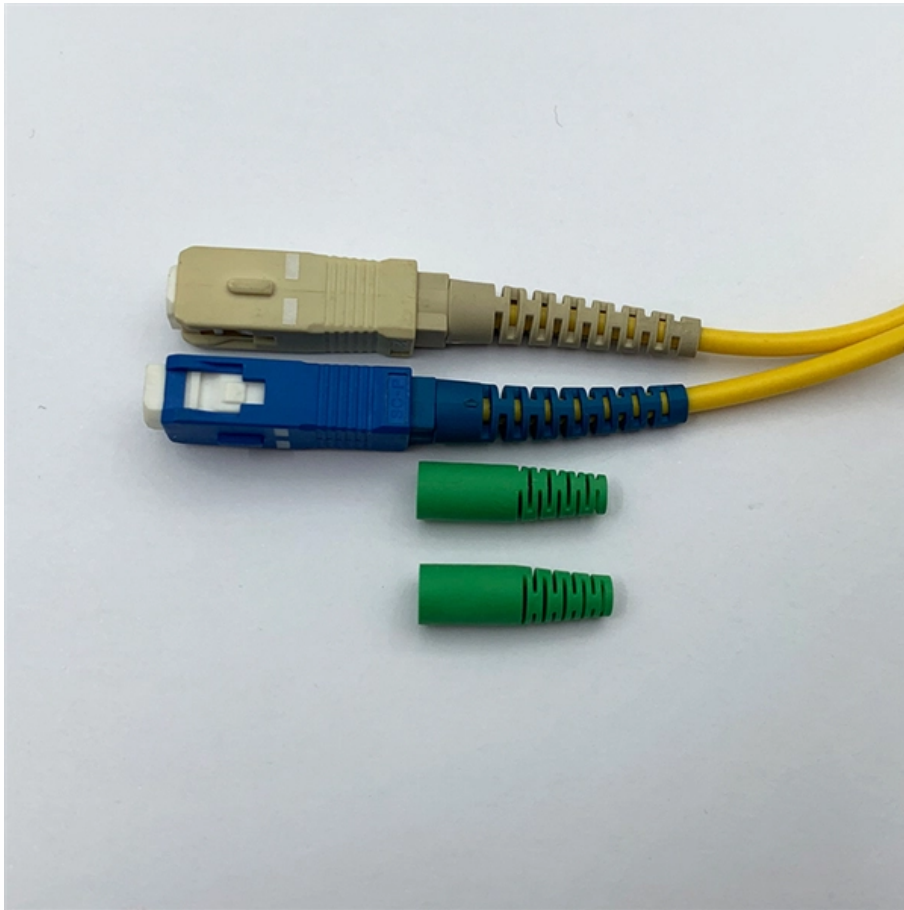


Cable tray bends from horizontal to vertical



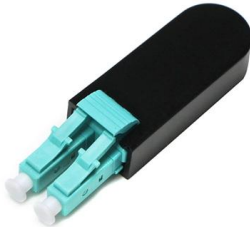


Overview

Vertical inside bends (risers) transition cables from horizontal to vertical planes while maintaining minimum bend radius for sensitive data cabling. Click "Calculate" to see the minimum bending radius and the recommended standard tray bend radius (300mm to 900mm) required for safe installation. To form a horizontal bend with a radius, no additional corner or elbow co radius configuration. Hubbell's NEXTFRAME® Ladder Tray is the effective and widely used cable runway that supports and delivers bundles of cable between cabinets, racks, and closets, along walls, and suspended from ceilings. Cable management systems require specific bend configurations depending on routing requirements.



Cable tray bends from horizontal to vertical



Trunking Cutting Techniques Guide , PDF

The document provides instructions for forming various bends and joints in electrical trunking and cable trays. It describes: 1) How to mark and cut a right-angle

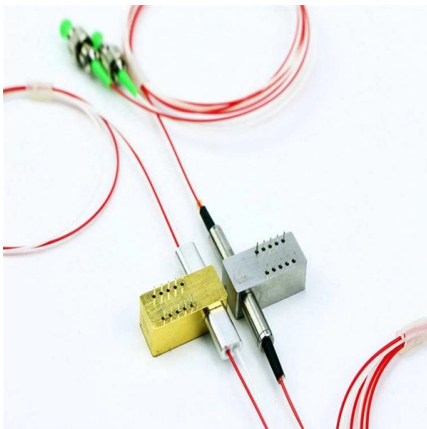
[Contact Us](#)

US Tray

US Tray Channel meets NEMA VE-1 standards for cable tray. Talon Products: Our cable cleats are high-strength cable restraints that limit cable movement. They



[Contact Us](#)



CABLE TRAY SYSTEMS GUIDE

FEATURES Supports horizontal/vertical and overhead cable management Durable black or gray powder coat finish Supports UTP or fiber cabling Complete family of accessories includes: wall supports and

[Contact Us](#)

Fiberglass Cable Tray

Looking for durable and corrosion-resistant Fiberglass Cable Tray? Our lightweight, high-strength trays offer long-lasting performance. Order now!

[Contact Us](#)



Cat6A Channel Limit: 100m vs 73-76m in Reality

Vertical drops through ceilings and walls -- 3 m gone. Cable tray bends, sags and offsets -- 5 to 8 m gone. Slack for terminations and rework -- 2 m gone. Real reach left: 73 to 76 m. Not 90.

[Contact Us](#)

DK-07 WOOD

- o Supports horizontal or vertical GPUs up to 383 mm
- o Extensive cooling support with up to 4 × 360 mm radiators
- o Built-in wireless charging pad and dual storage drawers
- o Integrated cable management



[Contact Us](#)

Cable Tray Installation Method Statement

Mark the cable tray / ladder routes as per approved shop drawings, ensure these are of horizontal and vertical runs only, except where it is not practicable and

[Contact Us](#)

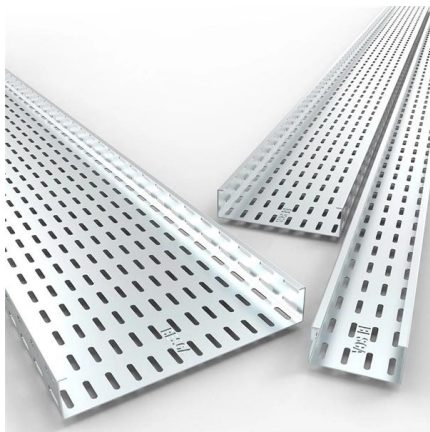




Appropriately insert horizontal cable tray bends for vertical tray

While rare, I have encountered situations where I have seen vertical ladder cable tray "jog" left or right to avoid obstacles, while heavy gauge cables in the tray are zip-tied/clamped to the

[Contact Us](#)



Solved: Cable Tray connections vertical

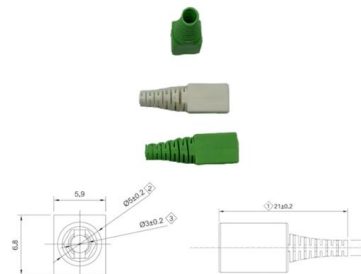
The main cable tray backbone will be installed in the building's four-story shaft. From it, a dedicated floor cable tray will branch out at each level.

[Contact Us](#)

Configuration methods A - Quiklok tray - Conne

90° horizontal bends G - Vertical bend without a radius (90) create a 90 vertical bend, remove one section of side wires on each side of the tray at the point where the angle is required and bend into

[Contact Us](#)



Cable Tray Ladder Trunking Wire Basket Installation

Cable trays are available in different configurations, straight sections are available to route cables in a horizontal or vertical plane. Fittings are available to route cables

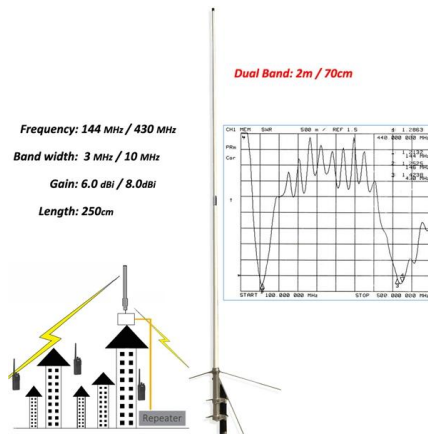
[Contact Us](#)



Types of Cable Trays: Ladder, Perforated, Basket, Solid

Explore all types of cable trays--ladder, perforated, basket, solid, and channel. Learn their uses, materials, pros, cons, and key differences.

[Contact Us](#)



Vertical outside Bend for Cable Trays, Manufacturer, India

Vertical out side bend can be available in any size as per size of Cable Tray. Bend can be made in perforated type cable tray, Ladder type Cable Tray, Wire Type

[Contact Us](#)

Sidhivinayak Enterprises

Cable Tray Bends Cable tray bends are fittings designed to guide cables smoothly through directional changes, ensuring seamless transitions in cable tray systems.

[Contact Us](#)



Smooth Transitions: Understanding the Important Role

Cable tray bends are designed to guide cables around obstacles, changes in direction, or elevations in an electrical system. They come in various

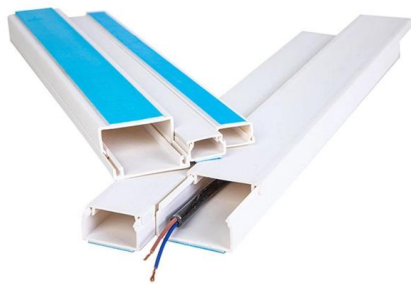
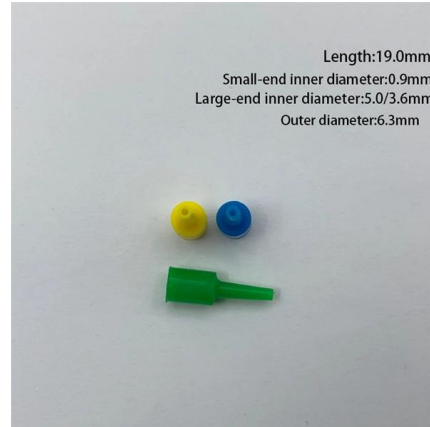
[Contact Us](#)



How to Produce Wire Mesh Cable Trays and Complex

Learn how to produce wire mesh cable trays and complex connectors with this detailed guide. Explore the key steps to create durable and reliable cable

[Contact Us](#)



Channel tray

Fittings are used to change the size or direction of the channel tray. The most important decision to be made in fitting design concerns radius. The radius of the bend, whether horizontal or vertical, can be

[Contact Us](#)

Smooth Transitions: Understanding the Important Role

They come in various configurations, including horizontal bends, vertical bends, and tees. This Cable Tray Bend in West Bengal enables seamless transitions

[Contact Us](#)



Cable Tray and Reels , Wire and Cable Management

Fast installation with dependable support. Everything you need to build a cable management system, including Cablofil wire mesh cable tray, ladder cable tray,

[Contact Us](#)



How to Fix Cable Tray Bends , Step-by-Step Guide for Pakistan

Horizontal bends redirect cable paths within the same plane, ideal for navigating around building columns or equipment. Vertical inside bends (risers) transition cables from horizontal to

[Contact Us](#)



Fiberglass Cable Tray 0° thru 90° Vertical Adjustable

Fiberglass - 0° thru 90° Vertical Adjustable Bends
A range of fittings makes the system customizable, accommodating any kind of tricky configuration. Users can

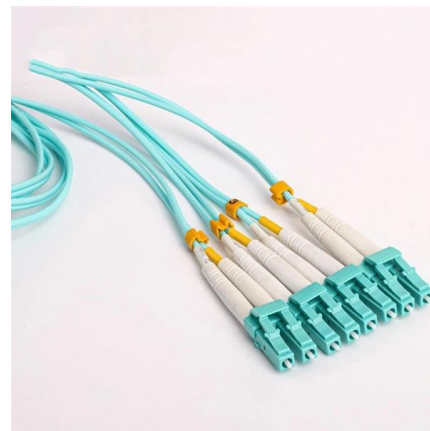
[Contact Us](#)



Types of Bends in Wire Mesh Cable Trays: A Detailed

Wire mesh cable trays are widely used in industrial and commercial installations to support and manage cables effectively. One of their greatest

[Contact Us](#)



Cable Tray Installation Best Practices for Ugandan Industrial

Secure cables to the tray using cable ties, cable cleats, or clamps at intervals specified by the cable manufacturer--typically every 500-750 mm for horizontal runs and every 300-450 mm for

[Contact Us](#)

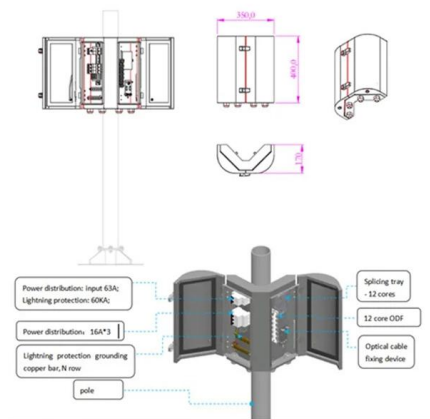




Bend cable tray

The bend in a cable tray--also known as a horizontal or vertical elbow--is critical because it allows cables to change direction safely and efficiently without sharp turns.

[Contact Us](#)



Cable Tray Bend Calculator

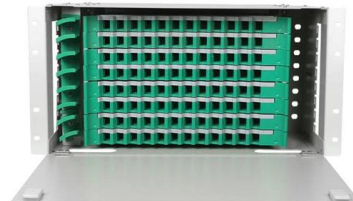
Engineering Notes IEC 61537 / NEC 392 Standards Tray bend radius must be \geq minimum cable bend radius. Use the largest cable diameter in the tray for calculation. Always select the next higher

[Contact Us](#)

Cable Tray Bends , E.B. Horsman & Son

Cable Tray Bends Sort By AUF62412LHLR Cable Tray U-Beam Horizontal Left Reducer, 24 in to 12 in W, 6 in Side Rail

[Contact Us](#)



Contact Us

For datasheets, pricing, or custom fiber access solutions, please visit:
<https://frindel.es>