

CT500 Cable Tray Specifications





CT500 Cable Tray Specifications



Cable Tray Technical Guide A practical guide to product selection and

In designing supports for a cable tray system, consideration should be given to the loads associated with future cable additions and any additional loading that may be applied to the cable tray system (e.g.,

[Contact Us](#)

23 CABLE MANAGEMENT CATALOGUE.pdf

Strong and simple to install, metal cable tray is available in light, medium and heavy-duty profiles and features a pre-galvanised finish. The sections of metal tray simply interconnect and bolt together for

[Contact Us](#)



E-Line CT Cable Tray

EAE Cable Tray System product E-Line CT is being manufactured as a hot dipped product that is used in heavy or medium duty application with its perforated design.

[Contact Us](#)



CATALOG Cable Tray Cable tray systems

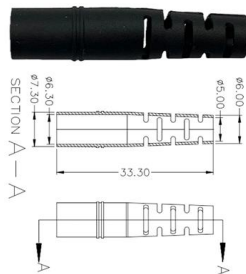
Its design includes innovative splice components that can reduce the need for supports and brackets, enable fast, oneperson installation and lower overall costs. Its I-beam and welded construction offers



TECHNICAL DATASHEET PREGALVANIZED CABLE TRAYS

PUHCT UNIVERSAL IMPERFORATED CABLE TRAYS
 Pregalvanized (TS EN 10346 - TS EN 10143)
 Description

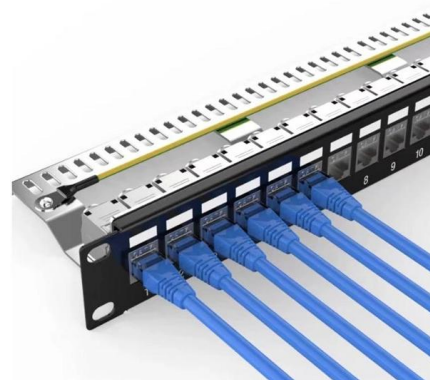
[Contact Us](#)



WireMesh Cable Tray

Designed for the installation of cable routes of high-current light and motor distributions, low-current distributions, measurement, regulation and distribution of other media.

[Contact Us](#)



Cable tray manual

INTRODUCTION The B-Line series Cable Tray Manual was produced by our technical staff. We recognize the need for a complete cable tray reference source for electrical engineers and designers.

[Contact Us](#)

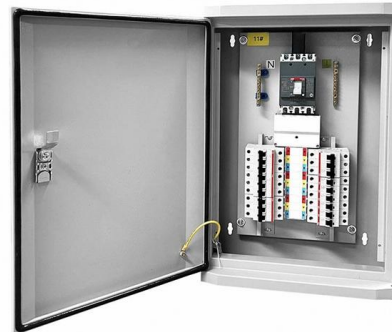


Wire mesh cable tray



Wire Mesh Cable Tray Solid Stainless Steel Cable Basket Tray is specially used for various cables in Telecom, Netcom, radio and television into the terminal

[Contact Us](#)



Niedax Cable Tray

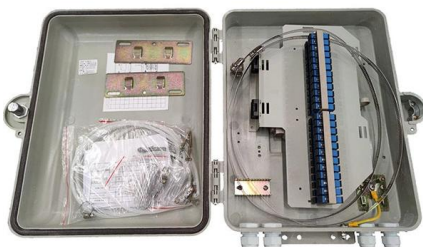
CABLE TRAY SPECIFICATIONS Cable Tray Design & Manufacture Niedax's Cable Tray Systems are designed and manufactured according to National (Indian Standard, CPR) and International

[Contact Us](#)

Technical specifications CT-C (Cable Tray Cover clippable)

No zinc pins appear which enables one to install cables in a fast way avoiding any risk on damages to cables nor injuries of workers. Thanks to the longer life span, ULTRA GALVA does not require

[Contact Us](#)



CT Cable Tray

The CT cable tray is continuously perforated, and made from 1 piece of material. It provides a solution for installers who are looking for an economical support option, only require a shallow cable laying

[Contact Us](#)



CT500*100 Multiple Specifications Cable Tray for Cable

The factory is located in Shandong Province, Company has advanced production equipment and detection equipment, have a large number of personnel to

[Contact Us](#)



Cable Tray Technical Specifications , PDF

The document provides a technical data sheet for cable trays including ladder and perforated types. It lists specifications for material, thickness, dimensions, loading

[Contact Us](#)

EMECO Cable Tray Systems Overview

This document provides definitions for terms related to cable trays and their components. It defines various types of cable trays like ladder, trough, channel,

[Contact Us](#)



LEGRAND CABLE TRAYS TECHNICAL GUIDE

Not all cable trays are equivalent. The mechanical and electrical characteristics, tests, certifications, overall quality management, recommendations mentioned in this technical guide only apply to our

[Contact Us](#)



CT Cable Tray Fittings Guide

The document provides specifications for CT perforated cable trays and fasteners, including dimensions, weights, and ordering codes for various widths. It also

[Contact Us](#)



500 MCM 3 C VNTC TRAY CABLE WITH GROUND

Suitable for installation in cable trays, supported by messenger wire in open air, raceways, channels, conduits and ducts. Approved for direct burial and outdoors in cable trays where sunlight resistant is

[Contact Us](#)

GUIDE CABLE TRAYS TECHNICAL

In accordance with its continuous improvement policy, Legrand reserves the right to change the specifications and illustrations without notice. All illustrations, descriptions and technical information

[Contact Us](#)



Microsoft Word

Cable Tray Types & Specification Perforated Cable Trays Features Moderate ventilation with added cable support advantage Thickness available 1.2mm, 1.6mm, 2.0mm, 2.5mm, 3.0mm.

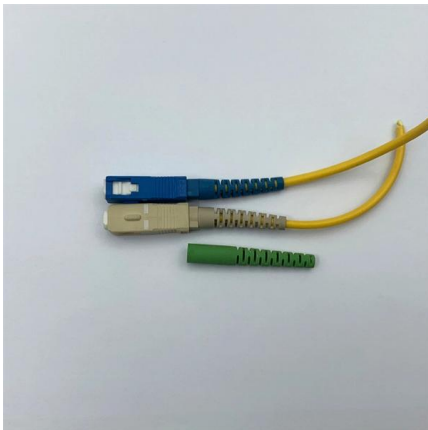
[Contact Us](#)



Full cable tray systems specification document

The drawings which constitute a part of these specifications indicate the general route of the cable tray systems. Data presented on these drawings is as accurate as preliminary surveys and planning can

[Contact Us](#)



Search

Search Up to 36% lower carbon footprint than standard plastic cable ties Globally, only 9% of plastic waste is recycled, and by 2050, up to 12 billion tons could pollute our landfills, waterways, and

[Contact Us](#)

Technical specifications CT-B90 (Cable Tray Bend)

Quality Registration Technical specification QR 0022 Created: 08/07/2013 Technical specifications CT-B90 (Cable Tray Bend) Finishing: Ultra galva

[Contact Us](#)



Cable Tray Branch , Trayco

Connect with BN06-10 Coated finishing available on demand. RAL colour code to be confirmed on your order.

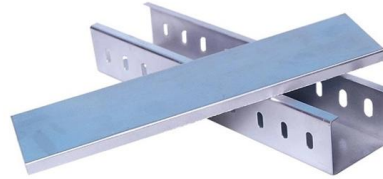
[Contact Us](#)



GUIDE CABLE TRAYS TECHNICAL

NEMA VE 1-2017 Specifies requirements for metal cable trays and associated fittings designed for use in accordance with the rules of Canadian Electrical Code, Part I and the National Electrical Code®

[Contact Us](#)



CT500*150 Multiple Specifications Cable Tray for Cable Construction

The cable tray is used for cable construction. It is light in weight, light in installation, safe and has good heat dissipation. There are many types of trays, which need to be made according to customer needs.

[Contact Us](#)

Contact Us

For datasheets, pricing, or custom fiber access solutions, please visit:
<https://frindel.es>