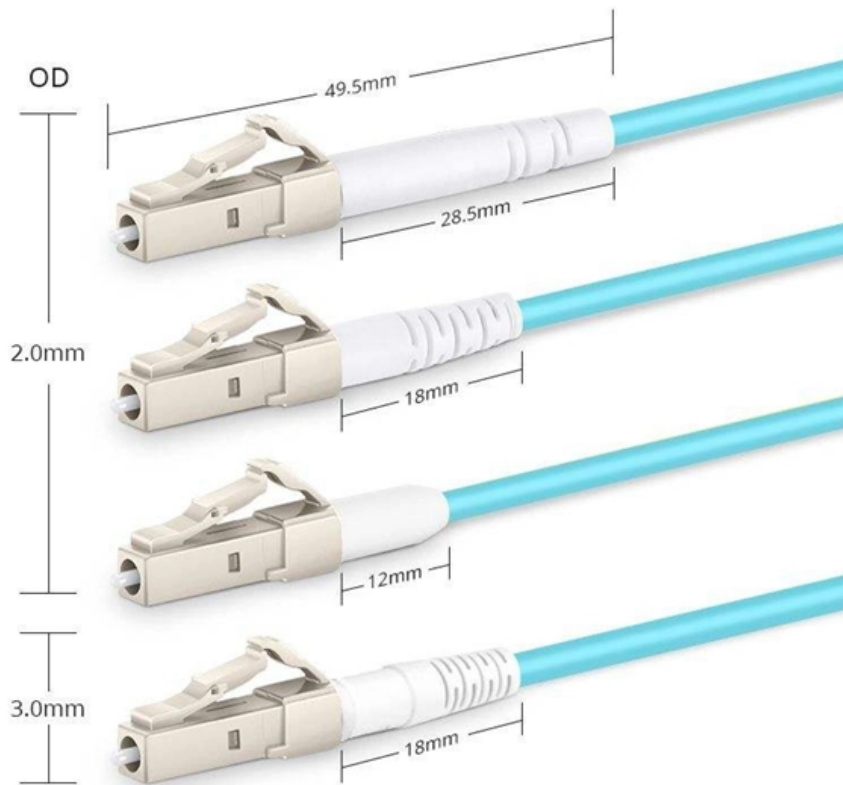


# CIF Price Erbium-Doped Fiber Amplifier SFP



Simplex LC UPC





## CIF Price Erbium-Doped Fiber Amplifier SFP

---



### Erbium-Doped Fiber

Erbium doped fiber amplifier (EDFA) is defined as a crucial component in advanced wavelength division multiplexing (WDM) systems that provides optical gain over a wide wavelength range, typically

[Contact Us](#)

### Optical Amplifier--EDFA (Erbium-doped Fiber Amplifier)

An Erbium-doped Fiber Amplifier (EDFA) is a device used to boost the strength of optical signals in fiber-optic communication systems. In EDFA in

[Contact Us](#)



### Erbium-Doped Fiber Amplifiers (EDFA)

Thorlabs' core-pumped erbium-doped fiber amplifiers (EDFAs) provide high small signal gains and output powers in a compact, turnkey benchtop package or a plug-in PXIe module with FC/APC (2.0

[Contact Us](#)



### Erbium Doped Fiber Amplifier

Discover erbium doped fiber amplifiers with 1550nm wavelength, SNMP management, and CE certification. Ideal for FTTH, CATV, and DWDM systems.

[Contact Us](#)



### **Erbium Doped Fibers , Rare Earth Doped Optical Fibers**

F-EDF erbium doped fibers provide the basic building block to fiber optic amplifiers used in broadband optical networks in the 1550 nm transmission window. These erbium doped fibers deliver gain

[Contact Us](#)



### **F-EDF Doped Optical Fiber**

F-EDF erbium doped fibers provide the basic building block to fiber optic amplifiers used in broadband optical networks in the 1550 nm transmission window. These erbium doped fibers deliver gain

[Contact Us](#)



### **EDFA: erbium-doped fiber amplifier board , FiberMall**

EDFA can amplify the optical signals of up to 48 channels with 100 GHZ's interval) or 96 channels with 50 GHZ's interval) at C band at the same time.

[Contact Us](#)





## What is the Erbium-doped Optical Fiber Amplifier (EDFA) ? , Sopto

EDFA fiber amplifier, also known as erbium-doped fiber amplifier, is a major breakthrough in optical fiber communication technology because it can directly amplify weak optical signals without going through

[Contact Us](#)



## Erbium-Doped Fibers

Featuring high absorption levels, these fibers provide reduced length, superior signal integrity, a minimal noise figure, and low nonlinear effects, making them ideal for use in erbium-doped fiber amplifiers

[Contact Us](#)

## Small Form-factor Pluggable: A Procurement Guide for DWDM and

EDFA (Erbium-Doped Fiber Amplifier): A widely deployed, broadband optical amplifier that boosts signals across multiple WDM channels. EDFA performance is influenced by input power,

[Contact Us](#)



## What is an Erbium-Doped Fiber Amplifier(EDFA) in

An Erbium-Doped Fiber Amplifier boosts optical signals in fiber networks, enabling long-distance communication with minimal loss and high

[Contact Us](#)





## High Power EDFA

Erbium-doped fiber amplifier (EDFA) is an optical repeater device that is used to boost the intensity of optical signals being carried through a fiber optic communications system. Dual pump EDFA consists

[Contact Us](#)



## Erbium-Doped Fiber Amplifiers (EDFAs): Foundations

Conclusion The erbium-doped fiber amplifier remains the cornerstone of optical communications, more than three decades after its invention. By directly

[Contact Us](#)



## What is an Erbium Doped Fiber Amplifier (EDFA) and

Learn about Erbium-Doped Fiber Amplifiers (EDFAs) and their crucial role in optical networks. Discover EDFA working principles, applications in DWDM systems,

[Contact Us](#)



## High Power Edfa 1550nm Optical Amplifier

Useful for fiber transport over very long distances, or for feeding a fiber optic PLC splitter for multi point signal distribution. The F-EDFA booster amplifier offers low

[Contact Us](#)





## Erbium-Doped Fiber

An erbium-doped fiber amplifier is one of the most popular optical devices in modern optical communication systems as well as in fiber-optic instrumentation. EDFAs provide many advantages

[Contact Us](#)



## EDFA

QFRF EDFA's are equipped with a 19" rack mount housing, a power range from 15dBm to 49dBm (31 to 80,000mw), and compatibility with CATV transmitters

[Contact Us](#)



## Erbium Doped Fibre Amplifier for C-Band

It can meet the requirements of FTTH fiber-to-the-home in CATV+XG (S)-PON optical network. It is an ideal optical receiving and demultiplexing device for FTTH

[Contact Us](#)



## [Hot Item] Hot Sale 1550nm EDFA Erbium Doped Fiber

Hot Sale 1550nm EDFA Erbium Doped Fiber Amplifier with Output Optical Power 13dB, Find Details and Price about 1550 CATV EDFA EDFA from Hot Sale

[Contact Us](#)





## Erbium Doped Fiber Amplifier Spec Sheet

The core element of a fiber amplifier is a piece of fiber doped with a rare earth element, which can provide laser amplification via stimulated emission when it is optically pumped with other light

[Contact Us](#)



## Erbium Doped Fiber Amplifiers

Erbium Doped Fiber Amplifiers (EDFAs) have revolutionized the optical communications world by expanding the applications for which optical fiber is a solution.

[Contact Us](#)



## Erbium-Doped Fiber Amplifiers (EDFAs): Foundations

EDFAs support multi-channel amplification over long distances, making them a foundational technology in global fiber-optic communication

[Contact Us](#)



## Customized Pre-Amplifier EDFA for DWDM Networks

The DWDM EDFA is a low-noise, gain-flattened C-band optical erbium doped fiber amplifier (EDFA) designed to extend the distance in dense wavelength-division multiplexing (DWDM) optical

[Contact Us](#)

## Erbium-Doped Fiber Amplifiers



High-power applications often involve ytterbium-sensitized fibers or double-clad fibers for enhanced pump absorption efficiency. Conclusion Erbium-doped fiber amplifiers remain a dominant technology

[Contact Us](#)



### Specialty Doped Fiber , Fibercore

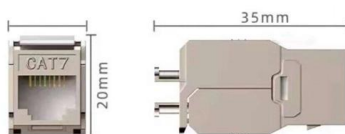
Dual Clad Erbium/Ytterbium doped Fiber - All glass fiber used in high power amplifiers (YEDFAs) for use up to 5W pump power. Utilizing Fibercore's petal shape design, the CP1500Y fiber has been

[Contact Us](#)

### What is an Erbium Doped Fiber Amplifier (EDFA) and

Learn about Erbium-Doped Fiber Amplifiers (EDFAs) and their crucial role in optical networks. Discover EDFA working principles, applications in

[Contact Us](#)



### 20dB Gain DWDM EDFA Pre-Amplifier, C-band Fiber

FS DWDM EDFA erbium doped fiber amplifier (pre-amplifier, 20dB gain, 13dBm Output, C-band) greatly increases optical power for long haul OTN networks.

[Contact Us](#)



## Customized In-Line EDFA for DWDM Networks

The DWDM EDFA is a low-noise, gain-flattened C-band optical erbium doped fiber amplifier (EDFA) designed to extend the distance in dense wavelength-division multiplexing (DWDM) optical



[Contact Us](#)

### An Extensive Library of Self-Developed Products



Optical Distribution Frame



Rack Mount Fiber Patch Panel



Stand Network Cabinet



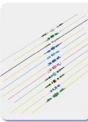
Fiber Optic Distribution Box



Fiber Adapters



Copper Cable Patch Panel



Fiber Patch Cords

## Erbium-Doped Fiber Amplifiers: Ultimate Guide

Discover the principles, applications, and benefits of Erbium-Doped Fiber Amplifiers in modern optics and telecommunications.

[Contact Us](#)

## Contact Us

---

For datasheets, pricing, or custom fiber access solutions, please visit:  
<https://frindel.es>