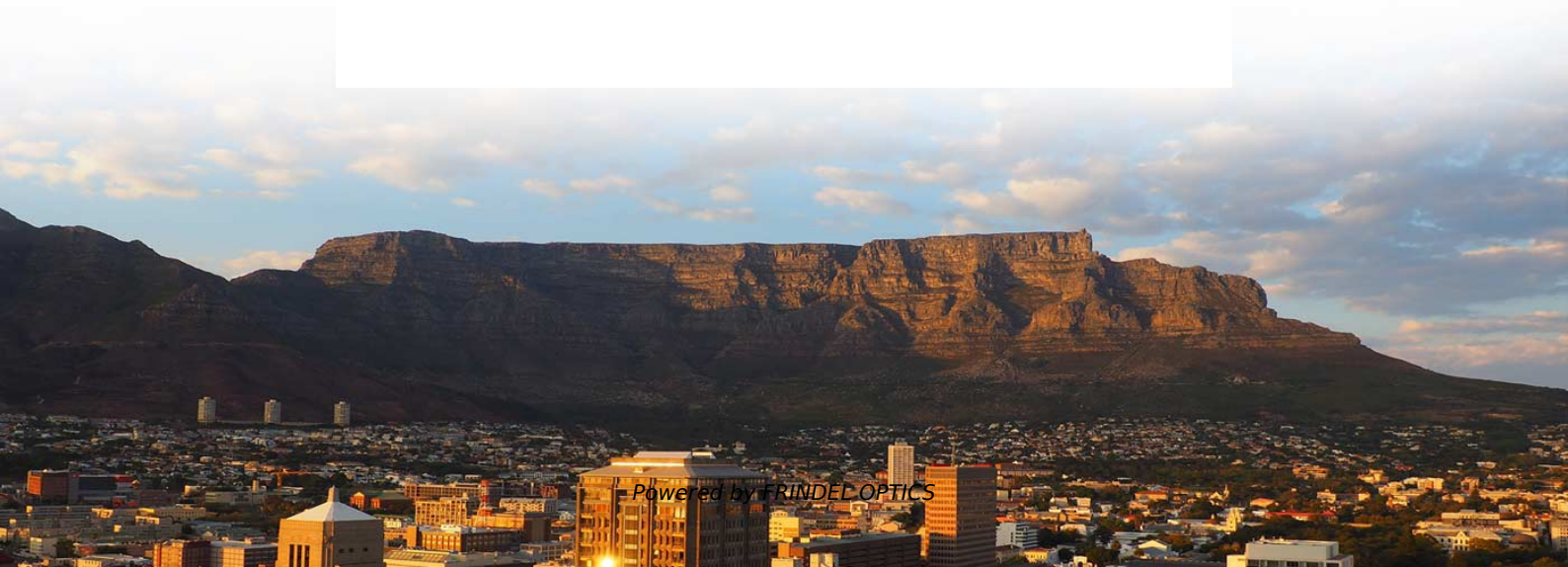


CE certification for high and low voltage complete sets of equipment





CE certification for high and low voltage complete sets of equipment



Understanding the Low Voltage Directive 2014/35/EU Requirements

In this article, we'll explore the key principles of the Low Voltage Directive (LVD), the certification process, and the benefits of CE marking, so you can ensure your products meet all necessary

[Contact Us](#)

Directive 2014/35/EU for Electrical Equipment Low

The EU's Low Voltage Directive (LVD) 2014/35/EU ensures electrical equipment within certain voltage limits includes protection against electric shock & other

[Contact Us](#)



Low Voltage Electrical Equipment CE Certification , JJRLAB

CE Certification for Low Voltage Equipment: Enables EU market access by meeting Directive 2014/35/EU, enhancing product safety, reliability, and brand value.

[Contact Us](#)

What is CE Marking Certification on Electrical Equipment?

CE marking is required to ensure that electrical equipment is safe to use and complies with European regulations, such as the Low Voltage Directive



CE marking - obtaining the certificate, EU requirements

Many products require CE marking before they can be sold in the EU. With this marking, the manufacturer indicates that a product meets the requirements set

[Contact Us](#)



Electrical Equipment (Safety) Regulations 2016: Great

The Electrical Equipment (Safety) Regulations 2016 implemented EU Directive (2014/35/EU) on electrical equipment designed for use within certain

[Contact Us](#)



High quality tensile aramid yarn

Protecting the fiber core and optical signal transmission High tensile and bending strength



CE Certification for Electrical Devices and Machines

Covers electrical equipment operating between 50V - 1000V AC and 75V - 1500V DC. It aims to ensure the safety of electrical devices in terms of fire,

[Contact Us](#)



6 Steps to CE Certification , TÜV SÜD

The distinction is whether or not this assessment must be completed by a Competent Authority or a Notified Body. A Notified Body is typically required for higher risk products (medical

[Contact Us](#)



Low Voltage Directive Compliance: Complete Guide , QIMA

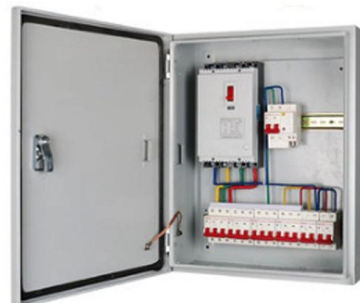
The Low Voltage Directive sets safety requirements for a wide range of electrical products sold in the EU. Learn what products are covered, what the LVD

[Contact Us](#)

CE Marking for Power Equipment: A Complete Checklist

Introduction to CE Marking CE marking is a crucial certification for power equipment manufacturers looking to distribute their products within the European Economic Area (EEA). It

[Contact Us](#)



CE Marking for Electrical Equipment

There are two types of CE Marking product certification for electrical equipment: one is according to the Low Voltage Directive (2006/95/EC) and the other is according to the Electromagnetic Compatibility

[Contact Us](#)



CE marking - obtaining the certificate, EU requirements

When Is CE Marking Mandatory? How to Obtain CE Marking? Do You Need An Independent Assessment? Do You Need to Pay Any Fees? How Do You Affix The CE Marking? Does CE Marking Have A Period of Validity? CE marking is only obligatory for products for which EU specifications exist and require the affixing of CE marking. Some products are subject to several EU requirements at the same time. You must make sure that your product complies with all the relevant requirements before affixing the CE marking to it. It is forbidden to affix the CE marking to See more on europa



Videos of CE Certification for High and Low Voltage complete sets of E

more videos

Watch video0:17 Vacuum circuit breaker @High and low voltage complete sets of equipment Zhujie Electric 4 views 1 month ago
Watch video0:11 Comprehensive Guide to High and Low Voltage Equipment TikTok yeyingm680_16.1K views 2 months ago
Watch video0:10 #Power industry #High and low voltage complete sets of equipment #Electrical automation equipment #Printing na TikTok yeyingm680_592 views 1 month ago
Watch full video Certification Company

CE marking Electrical - LVD 2014/35/EU , Certification

Our specialists are TÜV certified, accredited safety experts and are capable of performing a complete conformity assessment procedure in accordance with the

[Contact Us](#)

Electrical Equipment (Low Voltage Directive)

Electrical equipment that is being sold in the UK and Europe is required to be CE Marked under



the Low Voltage Directive (typically shortened to 'LVD'). The

[Contact Us](#)

CE marking - obtaining the certificate, EU requirements

When Is CE Marking Mandatory? How to Obtain CE Marking? Do You Need An Independent Assessment? Do You Need to Pay Any Fees? How Do You Affix The CE Marking? Does CE Marking Have A Period of Validity? CE marking is only obligatory for products for which EU specifications exist and require the affixing of CE marking. Some products are subject to several EU requirements at the same time. You must make sure that your product complies with all the relevant requirements before affixing the CE marking to it. It is forbidden to affix the CE marking to See more on europa



Videos of CE Certification for High and Low Voltage complete sets of E

more videos

Watch video0:16 High and Low Voltage Electrical Equipment & Power Solutions Jack Chen 8 months ago
Watch video0:17 Vacuum circuit breaker @High and low voltage complete sets of equipment Zhujie Electric 4 views 1 month ago
Watch video0:11 Comprehensive Guide to High and Low Voltage Equipment TikTok yeyingm680_16.1K views 2 months ago
Watch full video Certification Company

CE marking Electrical - LVD 2014/35/EU , Certification

Our specialists are TÜV certified, accredited safety experts and are capable of performing a complete conformity assessment procedure in



accordance with the

[Contact Us](#)



Low Voltage Directive (LVD)

The low voltage directive (LVD) (2014/35/EU) ensures that electrical equipment within certain voltage limits provides a high level of protection for European

[Contact Us](#)

Low Voltage Directive (LVD) for CE Marking

The Low Voltage Directive (LVD) applies to all electrical equipment, with a few exceptions, designed or adapted for use between 50-1,000 V AC or 75-1,500 V DC. If you manufacture electrical products

[Contact Us](#)



CE Certification for Electrical Devices and Machines

Here are the most commonly applied directives in the CE marking process for these products:
Low Voltage Directive (LVD - 2014/35/EU)
Covers

[Contact Us](#)

Low Voltage Directive 2014/35/EU - CE mark

The Low Voltage Directive (2014/35/EU) establishes safety requirements for electrical equipment. CE Marking LVD Tests and Certification

[Contact Us](#)



Low Voltage Directive 2014/35/EU Testing Lab , TÜV SÜD

The EU's Low Voltage Directive (LVD) 2014/35/EU ensures electrical equipment within certain voltage limits includes protection against electric shock & other

[Contact Us](#)

CE marking - obtaining the certificate, EU requirements

When Is CE Marking Mandatory?How to Obtain CE Marking?Do You Need An Independent Assessment?Do You Need to Pay Any Fees?How Do You Affix The CE Marking?Does CE Marking Have A Period of Validity?CE marking is only obligatory for products for which EU specifications exist and require the affixing of CE marking. Some products are subject to several EU requirements at the same time. You must make sure that your product complies with all the relevant requirements before affixing the CE marking to it. It is forbidden to affix the CE marking to See more on europa



Videos of CE Certification for High and Low Voltage complete sets of E

more videos

Watch video0:17Vacuum circuit breaker @High



and low voltage complete sets of equipment
 Zhujie Electric 4 views 1 month ago Watch
 video 0:11 Comprehensive Guide to High and Low
 Voltage Equipment TikTok yeyingm680_16.1K
 views 2 months ago Watch video 0:10 #Power
 industry #High and low voltage complete sets of
 equipment #Electrical automation
 equipment #Printing na TikTok yeyingm680_592
 views 1 month ago Watch full video See
 more Certification Company

CE marking Electrical - LVD 2014/35/EU , Certification

Our specialists are TÜV certified, accredited safety experts and are capable of performing a complete conformity assessment procedure in accordance with the

[Contact Us](#)



Low Voltage Directive 2014/35/EU - CE-Mark

2014/35/EU - CE-Certification for electrical equipments The EU Directive on electrical equipment (the "Low Voltage Directive") aims to ensure that only electrical equipment that provides a high level of

[Contact Us](#)

Top 8 Key Certifications for Electrical Products

Applies to a wide range of electrical products, including: Low-voltage equipment (50-1000V AC and 75-1500V DC) Household appliances

[Contact Us](#)



CE Marking Compliance for Low Voltage Directive

Enroll in CDG's CE Marking Compliance for Low Voltage Directive (2014/35/EU) Course. Learn



how to ensure your electrical products meet EU safety standards

[Contact Us](#)



Low Voltage Directive 2014/35/EU Testing Services

Low Voltage Directive 2014/35/EU services from TÜV SÜD ensure electrical equipment compliance for the EU and EEA. We are an EU Notified Body so you

[Contact Us](#)



Understanding the Low Voltage Directive 2014/35/EU Requirements for CE

Conclusion: Why CE Certification is Essential for Your Business In conclusion, the Low Voltage Directive 2014/35/EU requirements are a crucial part of the regulatory landscape for electrical equipment sold

[Contact Us](#)

PAT (Portable appliance testing)

A high street travel agency thought about what it needed to do to maintain its portable electrical equipment. As their work generally included office work and dealing with customers the manager

[Contact Us](#)



CE Certification for electrical/electronics



CE Mark Certification for Electrical Equipment If you are placing your electrical or electronic product (s) in the European Market for the first time, you need that your product (s) be CE Marked. The

[Contact Us](#)

Directive 2014/35/EU for Electrical Equipment Low

Only products that fully comply with the requirements of the Low Voltage Directive 2014/35/EU may be placed on the European market and marked with a

[Contact Us](#)



EU Low Voltage Directive 2014/35/EU Explained: CE

EU Low Voltage Directive 2014/35/EU sets essential safety requirements for electrical equipment sold in Europe. Learn CE marking rules,

[Contact Us](#)



Low Voltage Directive 2014/35/EU - CE-Mark

The EU Directive on electrical equipment (the "Low Voltage Directive") aims to ensure that only electrical equipment that provides a high level of protection for health and safety while also guaranteeing the

[Contact Us](#)





Contact Us

For datasheets, pricing, or custom fiber access solutions, please visit:
<https://frindel.es>