

# C-value in cable tray fabrication





## C-value in cable tray fabrication

---



### Cable Ladder Cable Tray Weight Calculation Guide

Learn how to perform a Cable Tray Weight Calculation for accurate estimations. Discover the formulas and step-by-step methods for calculating the

[Contact Us](#)



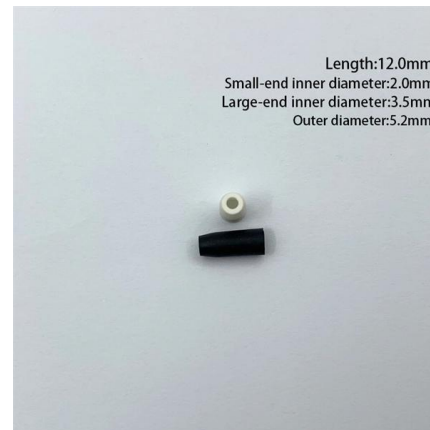
### What is Cable Tray and How it is used in Industrial

What is Cable Tray? In electrical cabling, a cable tray is a metallic structure used to handle insulated electrical power distribution, control, and

### Appendix 3F Cable Trays and Cable Tray Supports

The basic stress allowables for the cable trays are based on the American Iron and Steel Institute specification. The basic stress allowables for cable tray supports utilizing light gage cold rolled

[Contact Us](#)



### Cable Tray - AD STEEL

Our Ladder Cable Trays provide robust support for heavy-duty cable management, ensuring easy cable routing, high strength, and enhanced durability.

[Contact Us](#)



### **Codes and Standards , Cable Tray Institute**

The Cable Tray Institute is making available the current edition of this practical guide for the proper installation of aluminum or steel cable tray systems. These guidelines will be useful to engineers,

[Contact Us](#)

### **GUIDE CABLE TRAYS TECHNICAL**

NEMA VE 1-2017 Specifies requirements for metal cable trays and associated fittings designed for use in accordance with the rules of Canadian Electrical Code, Part I and the National Electrical Code®

[Contact Us](#)



### **Guide to cable support systems**

The specifically occurring cable load is a value, which can be calculated with the help of the characteristic values of the available cable and the inclusion of the information offered in VDE 0639

[Contact Us](#)



## IEC Standard for Cable Tray: Complete Technical Guide

It applies to cable trays made of steel, stainless steel, aluminum, or other metallic materials. The standard ensures these systems can handle the

[Contact Us](#)



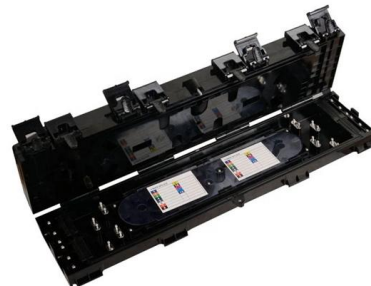
## LEGRAND CABLE TRAYS TECHNICAL GUIDE

Not all cable trays are equivalent. The mechanical and electrical characteristics, tests, certifications, overall quality management, recommendations mentioned in this technical guide only apply to our

[Contact Us](#)

## Technical specification for FRP Cable Trays & Accessories

1 Drawings / Document Description Technical Data Sheet for FRP Cable trays & Accessories 2 GA drawings of FRP Cable Trays & Accessories 3 Manufacturing Quality Plan for FRP Cable Trays &



[Contact Us](#)



## Cable Tray Systems: Requirements and Best Practices

Comprehensive guide to cable tray systems requirements: tray types, materials, loading, supports, bonding, routing, and best practices for safe electrical cable management.

[Contact Us](#)

## Guide to cable support systems



A cable support system consists of cable support lengths and system components, such as cable support fittings, support elements, mounting elements and system accessories. The cable support

[Contact Us](#)



### **B-Line series Cable Tray Design Considerations**

As an industry leader in cable tray, Eaton offers one of the widest ranges of cable management solutions available in the market today with its B-Line series portfolio. With unmatched quality and service, we

[Contact Us](#)

### **Westinghouse AP1000 Design Control Document Rev. 19**

Based on observations during the tests, the high damping values within the cable tray system are provided mainly by the movement, sliding or bouncing of the cables within the tray.

[Contact Us](#)



### **B-Line series Cable Tray Design Considerations**

For ladder or ventilated trough trays, the total sum of the cross-sectional areas of all the cables to be installed in the cable tray must be equal to or less than the allowable cable area for the tray width, as

[Contact Us](#)





## Cable Tray Technical Guide A practical guide to product selection and

In designing supports for a cable tray system, consideration should be given to the loads associated with future cable additions and any additional loading that may be applied to the cable tray system (e.g.,

[Contact Us](#)



## CABLE TRAY INSTITUTE

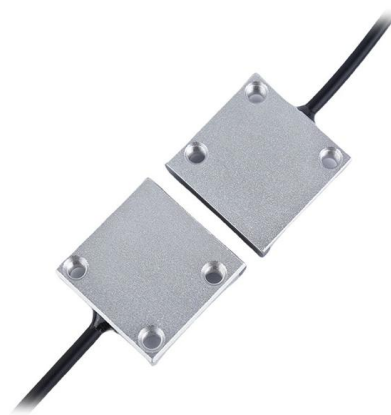
The Cable Tray Institute (CTI) was founded in 1991 to support the cable tray industry by engaging in research, development, education, and the dissemination of

[Contact Us](#)

## CABLE TRAY SYSTEMS GUIDE

The total load supported by the cable tray, uniformly distributed. This will be the combined weight of all of the cables or tray contents, any environmental loads (snow, ice, dust) and any concentrated static

[Contact Us](#)



## Cable tray manual

Nearly every aspect of cable tray design and installation has been explored for the use of the reader. If a topic has not been covered sufficiently to answer a specific question or if additional information is

[Contact Us](#)

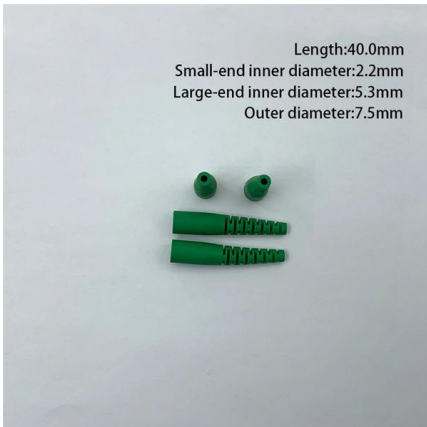




**Cable Tray SHIB NAL**

Cable trays are not raceways, but they are treated as a structural component of a facility's electrical system. Cable trays are a part of a planned cable management system to support, route, protect and

[Contact Us](#)



**Complete cable tray manual for electrical engineers and**

Complete cable tray manual for electrical engineers and designers (on photo: power cable management ladder tray systems assembled aluminum cable tray ladder

[Contact Us](#)

**12-SDMS-06**

Carbon steel cable trays intended for installation in corrosive or highly corrosive environments with severe alkaline and acidic conditions shall be hot-dip galvanized zinc after fabrication.

[Contact Us](#)



**Enduro\_Specification\_Ladder Cable Tray\_04-30-21**

Straight section ladder tray shall be prefabricated structures made from fiberglass reinforced plastic, consisting of two longitudinal members (side rails) connected by transverse rungs, meeting all the

[Contact Us](#)





## Understanding IEC 61537: A Comprehensive Guide to

IEC 61537 is a crucial international standard established by the International Electrotechnical Commission (IEC). The Chinese national standard GB/T 21762

[Contact Us](#)



## Best Practice Guide to Cable Ladder and Cable Tray Systems

This guide covers cable ladder systems, cable tray systems, channel support systems and associated supports intended for the support and accommodation of cables and possibly other electrical

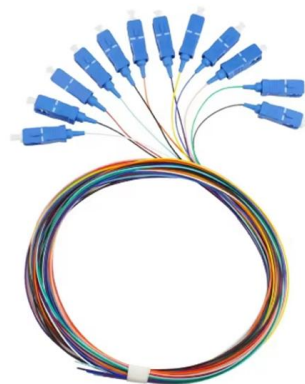
[Contact Us](#)



## Cable Tray Technical Guide A practical guide to product selection and

Cable Tray Technical Guide A practical guide to product selection and installation This guide for engineers and installers has been developed by ABB as a practical reference regarding cable tray

[Contact Us](#)



## Technical Specification for Cable tray installation and cable laying work

1. Scope :- This specification covers the following major activities; - Fabrication and installation of Mild Steel (MS) support structure for Galvanized Iron (GI) Cable tray. - Installation of perforated GI Cable

[Contact Us](#)





## Technical Specification for Cable tray installation and cable laying work

Cable termination work:- - Contractor has to carry out HV cable termination including following activities - Termination for 95 sq. mm 1 C copper, 33 kV HT cable at both the ends using HV termination kit for

[Contact Us](#)



### CABLE TRAY CABLE TRAY

3 4 5 Alternatively, most trays can be hot dip galvanized after fabrication to provide a long, corrosion resistant service life even when d outside. Depending on the design of the tray, you either use pre

[Contact Us](#)

## Contact Us

---

For datasheets, pricing, or custom fiber access solutions, please visit:  
<https://frindel.es>