

# **Busbar of Low-voltage Interconnection Cabinet**





## Busbar of Low-voltage Interconnection Cabinet

---



### Low-voltage switchgear Installation, handling MNS Light W and

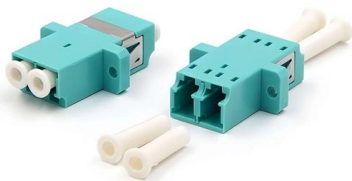
Interconnection of horizontal busbars Connection of the horizontal busbars between the cubicle units should take place from the front of the cubicles. Phase bars, N bars and PE bars are all to be joined

[Contact Us](#)

### EMS , ? Individual Busbars for Switchgear

Flexible busbars such as our Isoflexx® can be used for all electrical connections in control cabinets and systems in the low-voltage range.

[Contact Us](#)



### Busbar

Busbar is used within control cabinets of 200 to 1600A by panel builders and OEMs. Although, for several reasons, busbar isn't always the first option, including:

[Contact Us](#)

### Busbar

Before we get into how busbar offers the same benefits as IEC devices within a control panel, it is important to understand what a busbar system is and how they are used today.

[Contact Us](#)



### **DIY Guide: Mounting Low Voltage Busbar Insulators in Electrical Cabinets**

Proper mounting of low voltage busbar insulators in electrical cabinets is fundamental to creating safe, reliable, and efficient power distribution systems. By following this comprehensive

[Contact Us](#)

### **IEC 61439 Busbar Standard: A Guide to Low-Voltage**

This standard covers busbars used for low-voltage assemblies, power distribution, photovoltaic power systems, and electrical energy control. The IEC

[Contact Us](#)



### **UL 845 Low Voltage MCC for North American Motor Control-NEMA**

This is why a low voltage MCC must be designed as more than a cabinet full of starters. For the North American market, the assembly must follow strict safety expectations, including UL

[Contact Us](#)

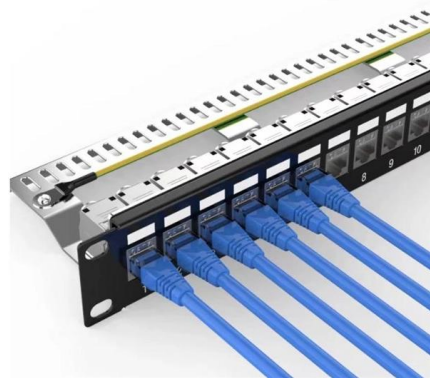




## Application of electrical busbar in High Voltage Cabinets

High voltage cabinets are central components in power distribution and electrical management across a variety of industrial and utility applications. Electrical busbars are essential in these cabinets,

[Contact Us](#)



### Extract from LV 10 · 04/2018

The 40 mm busbar system is used in machine engineering and distribution boards, in meter cabinets and in power distribution systems of the low performance range up to 400 A.

[Contact Us](#)



## Low-voltage switchgear

Busbar systems for individual switchgear and controlgear The tested complete solution - Enclosure and bar system Design verification to IEC/DIN 61 439, tested

[Contact Us](#)



## DMC Low-Voltage Insulators for New Energy Power Distribution, Busbar

DMC low-voltage insulators, busbar insulation columns for photovoltaic and energy storage cabinets, and anti-aging BMC molded parts are essential components in modern new energy

[Contact Us](#)

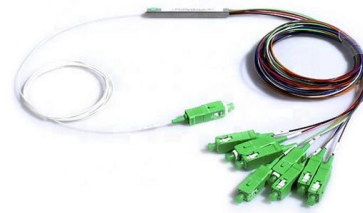


## ABB Low voltage distribution system



ABB Low voltage distribution system offers safe and reliable distribution based on InLine ZLBM fuse switch disconnecter. It's a full IP2X protected system consisting

[Contact Us](#)



### Busbar Design Standards for MV Switchgear

Busbar design within Medium Voltage (MV) switchgear is a critical aspect, fundamentally ensuring the safe, reliable, and efficient operation of power

[Contact Us](#)



### Low Voltage Switchgear Design for US and EU Markets: Busbar

Learn how low voltage switchgear design balances busbar current rating, cabinet space, heat management, and modular construction for U.S. and European projects.

[Contact Us](#)



### Low Voltage Cabinets

Explore Lucy Electric's range of Low Voltage Indoor & Outdoor Cabinet: Multi Service Distribution Board, Fused Distribution Cabinet, Horizontal & Vertical Busbar.

[Contact Us](#)

Catalog Extract LV 10 · 10/2022



Our busbar systems for electrical installations offer a particularly easy way of fitting distribution systems with electrotechnical components. The modular design saves space, while quick assembly contacts

[Contact Us](#)



### Low Voltage Switchgear Design & Calculation Presentation

Learn LVSG design, construction, and calculations. Covers enclosures, busbars, IP ratings, and forms of separation. Electrical engineering presentation.

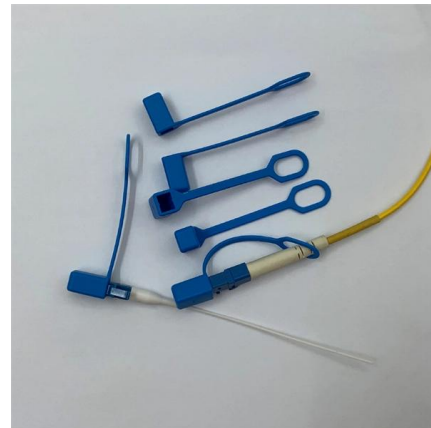
[Contact Us](#)



### Low Voltage Bus Bars for Switchgear: Tailored Electrical Conduits for

Low Voltage Bus Bars for Switchgear play a pivotal role in efficient power distribution within electrical systems. By offering customized solutions designed for compatibility, safety, and optimal

[Contact Us](#)



### GRL Low-Voltage Enclosed Busbar Systems

Modern power distribution increasingly relies on modular busbar systems for efficient and safe electrical wiring. A low-voltage Enclosed busbar system uses conductive bars (instead of

[Contact Us](#)



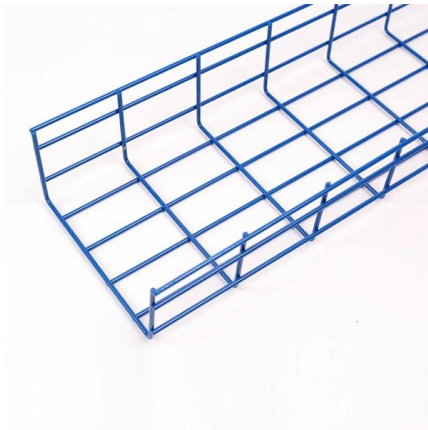
### Electrical Cabinet Design: Optimal Low



### Voltage Busbar

Electrical cabinet design requires meticulous attention to component placement, particularly when configuring low voltage busbar systems. Proper

[Contact Us](#)



### Z-busbar system

ABB Z-busbar offering is available for 400A, 630A, 1600A and 2500A, to be used either as TN-C or as TN-S with a protected N-bar. The Z-busbar system is used

[Contact Us](#)

### Understanding the Essentials of Low Voltage

A low voltage distribution cabinet is an electrical enclosure designed to distribute and manage electrical power at voltages typically below 1,000 volts.

[Contact Us](#)



### Z-busbar system

Z-busbar system Fully IP2X-protected busbar system for substations, cable distribution cabinets or other distribution applications When safety is top priority, a

[Contact Us](#)



## Electrical Cabinet Design: Optimal Low Voltage Busbar

This comprehensive guide explores best practices for busbar insulator placement in electrical cabinet design, covering material selection, spacing

[Contact Us](#)



## Busbars and Connectors in HV and EHV installations

LV Busbar Trunking Systems In low-voltage installations, busbar trunking systems offer a cost-effective solution for power distribution, supplying multiple devices

[Contact Us](#)

## Low-voltage switchgear with fixed units

Busbar systems The busbar systems are protected against accidental human contact. The horizontal busbars are placed at the top of the switchgear and/or at the bottom. They are connected with

[Contact Us](#)



## Contact Us

---

For datasheets, pricing, or custom fiber access solutions, please visit:  
<https://frindel.es>