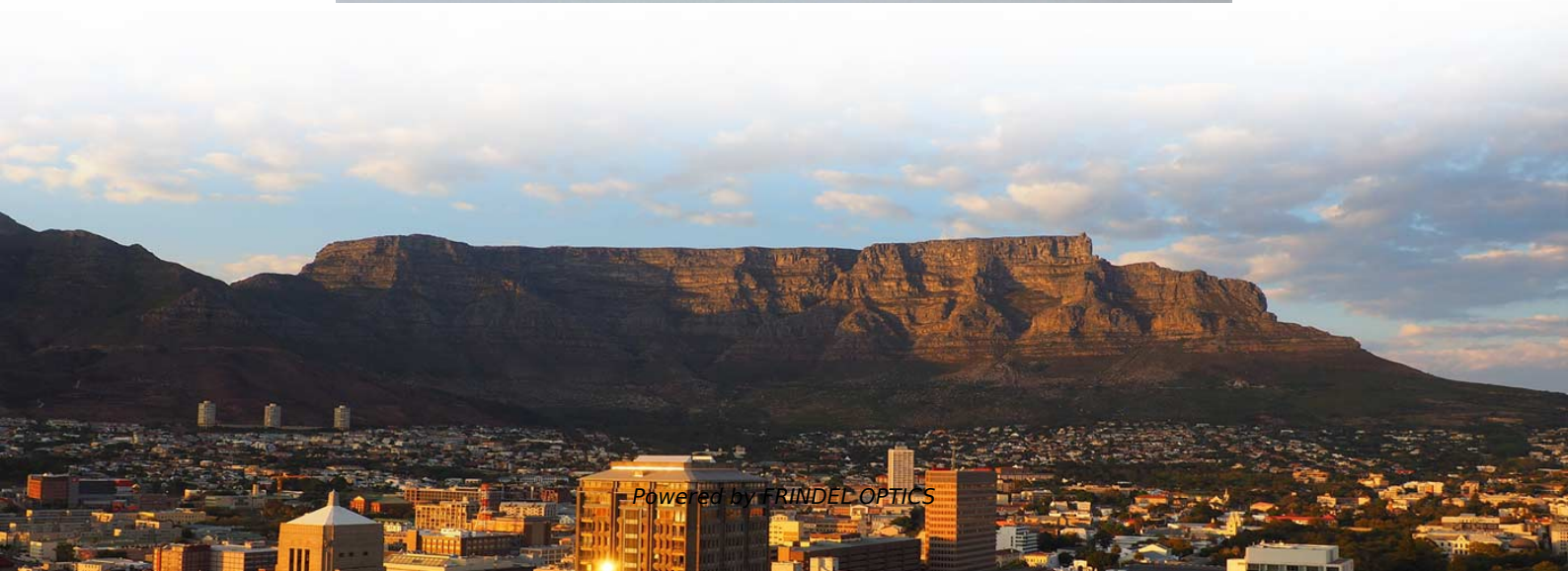


Bridging between cable tray joints





Bridging between cable tray joints



How to mount joints between sections of Unex insulating cable tray 66

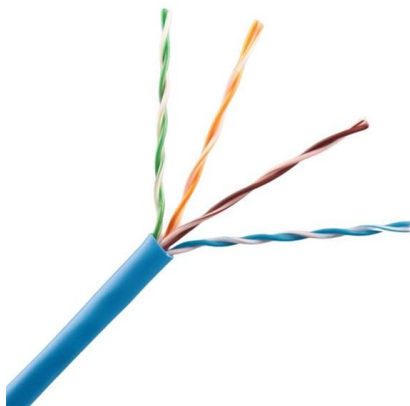
Mounting the connecting piece between two lengths of Unex insulating cable tray. To mechanically join lengths of tray. In areas with temperature variations (e.g. outdoor applications), is

[Contact Us](#)

Cable Tray Installation Guidelines for Engineers

All cable tray systems shall be bonded together with bonding jumpers. Cable trays shall be grounded at least every 15 m (50 ft) and at both ends for Cable Tray Installation Guidelines for Engineers.

[Contact Us](#)



B-Line series Cable Tray Design Considerations

For ladder or ventilated trough trays, the total sum of the cross-sectional areas of all the cables to be installed in the cable tray must be equal to or less than the allowable cable area for the tray width, as

[Contact Us](#)

Electrical cable Tray Installation Details with Support

Comprehensive technical drawing illustrating various cable tray installation details for electrical systems. The document includes multiple configurations for mounting



Equipment Grounding Conductors for Cable Tray Systems

Equipment Grounding Conductors for Cable Tray Systems Cable tray wiring systems have excellent safety and dependability records. These excellent records are the result of cable tray's unique

[Contact Us](#)



How to Install Cable Tray: A Comprehensive Guide to Different Cable

Welcome to our step-by-step guide on installing cable trays! In this video, we'll explore the different types of cable trays available and provide detailed instructions for their installation.

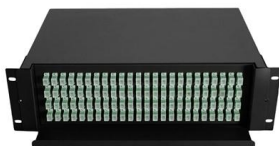
[Contact Us](#)



392.44 Expansion Splice Plates.

According to the document, there are four basic types of cable tray connectors including rigid, expansion, adjustable, and reducer. In the NEMA document, table

[Contact Us](#)



B-Line Cable Tray Design Guide



Cable Tray Design Considerations Guide For commercial & industrial applications f Cable tray design considerations guide for commercial & industrial applications Is

[Contact Us](#)



Guide to cable support systems

Widths of 8 and 15 millimetres enable flexible adjustment to different cable trays, cable ladders and cable volumes. With the help of the matching SBV tightening strap locks and 576 spring chuck, the

[Contact Us](#)

Cable Tray Installation Guidelines for Engineers

Cable Tray Installation Guidelines for Engineers Cable trays shall be installed according to the latest revision of the NEC, NEMA VE 2, and manufacturer's installation instructions. Cable tray elbows

[Contact Us](#)



Cable Tray Ladder Trunking Wire Basket Installation

Resources For Electrical & Electronic Engineers Cable Tray Ladder Trunking Wire Basket Installation Guidelines What Are Cable Trays? An assembly of

[Contact Us](#)





Technical Specification for Cable tray installation and cable laying work

Approval of IPR shall be obtained for site preparation and marking the cable tray routes and locations of cable tray support before proceeding with the erection and installation work.

[Contact Us](#)



Cable tray manual

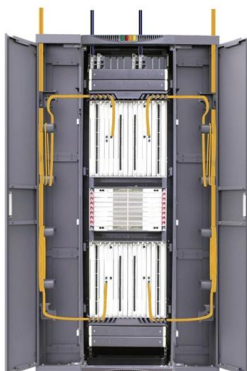
Nearly every aspect of cable tray design and installation has been explored for the use of the reader. If a topic has not been covered sufficiently to answer a specific question or if additional information is

[Contact Us](#)

Cable Tray Systems: A Complete Guide to Types

Discover the essential guide to cable tray systems. Learn about ladder, trough, and wire mesh types, key components, and expert installation tips

[Contact Us](#)



Cable Tray Technical Guide A practical guide to product selection and

Cable tray length is selected based on the load to be supported, the distance between the supports (also referred to as the span), and handling and installation constraints.

[Contact Us](#)



Thermal Contraction and Expansion of Cable Tray

The cable tray needs to be anchored at the support closest to the midpoint between the expansion joints with hold down clamps and secured by expansion guides at all other support locations. The

[Contact Us](#)



Practices for grounding and bonding of cable trays

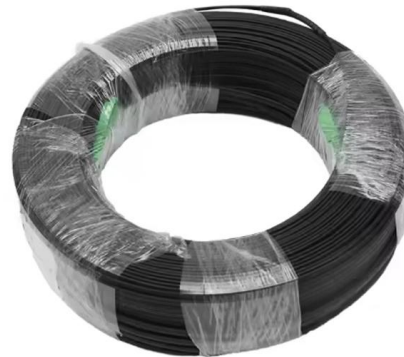
Grounding and bonding of cable trays There are three wiring options for providing an EGC in a cable tray wiring system: An EGC conductor in or on

[Contact Us](#)

ICSBOC 2018 Installation of joints in cable supported bridges

1. Introduction Deck expansion joints generally perform a critical function in bridges of any significant span length, by enabling the deck to expand and contract (due to temperature changes, creep,

[Contact Us](#)



Cable Tray Grounding: Power, Instrumentation, and

Cable tray systems are in the path of ground fault currents. Cable tray systems are bonded together through their bolting, connectors splice plates, clamps, and bonding jumpers where there are gaps in

[Contact Us](#)





B-Line series Cable Tray Design Considerations

As an industry leader in cable tray, Eaton offers one of the widest ranges of cable management solutions available in the market today with its B-Line series portfolio. With unmatched quality and service, we

[Contact Us](#)



Cable Tray Trunking & Ladder Installation Method for

Resources For Electrical & Electronic Engineers Cable Tray Trunking & Ladder Installation Method for Projects The purpose of this article is to define the

[Contact Us](#)



Connecting Cable Trays: Your Guide to Secure and

Learn common methods for connecting cable trays safely and efficiently. Our guide covers splice plates, quick-connects, and key tips for secure

[Contact Us](#)

EFFICIENT FIELD TERMINATION

1. **PREPARE** - Strip and clean the fiber

2. **INSERT** - Fast and easy insertion

3. **LOCK** - Secure connection achieved

No Polishing | No Epoxy

Eliminates cable excess length and pigtail splice storage. Designed for high-efficiency onsite installation.

Cable Tray Technical Guide A practical guide to product selection and

Cable Tray Technical Guide A practical guide to product selection and installation This guide for engineers and installers has been developed by ABB as a practical reference regarding cable tray

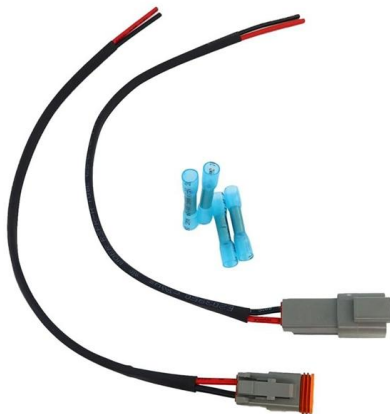
[Contact Us](#)



ICSBOC 2018 Installation of joints in cable supported bridges

As a result of their greater size and complexity, the expansion joints of cable supported bridges often present particular challenges for transportation and installation.

[Contact Us](#)



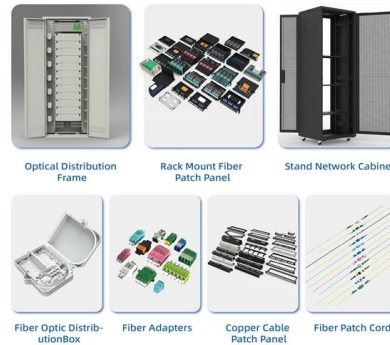
Beama Best Practice Guide , Installation Of The System , Cable

The radius for cable ladder and cable tray fittings is usually determined by the bending radius and stiffness of the cables installed on the cable ladder or cable tray.

[Contact Us](#)



An Extensive Library of Self-Developed Products



Cable Tray Expansion Joint Installation: Comprehensive

Discover best practices for cable tray expansion joint installation to accommodate thermal changes, ensuring structural integrity and compliance with

[Contact Us](#)



Cable Tray Installation and Cable Handling Method

Efficient cable tray installation and proper cable handling are critical for ensuring the reliability and safety of electrical systems. Adherence to these guidelines is

[Contact Us](#)



Contact Us

For datasheets, pricing, or custom fiber access solutions, please visit:
<https://frindel.es>