

Bottom baffle of the front door of the network cabinet



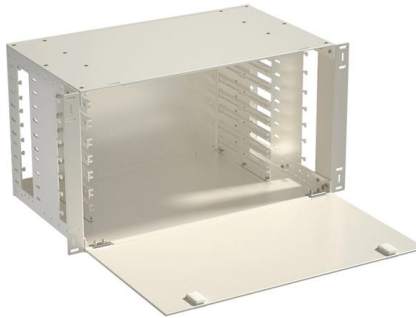


Overview

Directs cool air entering the bottom of the cabinet to the space between the front door and equipment. If you want to put in the work, probably do a cut out in the back and install exhaust fan/s using a molar to ac adapter. Example: AC Infinity MULTIFAN S5 Silent Dual 80mm USB Fan for Receiver, DVR, Playstation, Xbox.



Bottom baffle of the front door of the network cabinet



CHAPTER 3

Make sure that any front or back cabinet doors are at least 63% open to allow adequate airflow. This can be accomplished by removing the doors, or by

[Contact Us](#)

CABINET_DESIGN_02

These air inlet holes are used for cooling the components inside the cabinet. They are placed on the bottom side of the doors. There must be enough space, approximately 10-20 centimeters, between

[Contact Us](#)



Some tips for helping cool your Datacenter racks and

In Datacenters, cool air may enter a cabinet through the front door or through the bottom of the cabinet. The thermal management system within the

[Contact Us](#)

Speaker baffle design, diffraction and baffle step

Diffraction, edge diffraction and baffle step are important issues, that need to be considered for cabinet and speaker baffle design. While some aspects



Exhaust Duct and Panels

Air Diverter creates a barrier between the cabinet door and the front of equipment along the top and sides of the cabinet. At the base, a tray diverts cool air from the plenum below the raised floor to the

[Contact Us](#)



Intellinet 12U Network Server Rack Enclosure Cabinet

Intellinet 12U Network Server Rack Enclosure Cabinet with Integrated Fans - IP20 Rated, Reversible Tempered-Glass Front Door, Removable Side Panels - 3 Yr

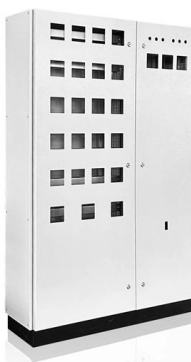
[Contact Us](#)



RackPath 6U Wall Mount Network Rack Cabinet

Product description This RackPath 6U performance wall mount network server cabinet is designed to provide temperature-controlled accommodation for your

[Contact Us](#)





SmartRack Side Airflow Ducting Kit for Network

The SRSWITCHDUCT is a rackmount, ducting kit that pulls air in from the front of the rack and directs it to the side intake on equipment such as network switches.

[Contact Us](#)



The Ultimate Guide to Network Cabinets: Everything

The front door of these cabinets can rotate up to 180 degrees. It has a knock-down structure (saves volume up to 70%) that reduces the cost of

[Contact Us](#)



Part Number: Floor Standing Network Cabinet (Vented Door)

Part Number: Floor Standing Network Cabinet (Vented Door) Feature 19" standard installation achieves the international standard for the installation of the versatility of the parts, door interchangeability.

[Contact Us](#)



Aeons SB Series 6U Wall-Mount Network Cabinet,

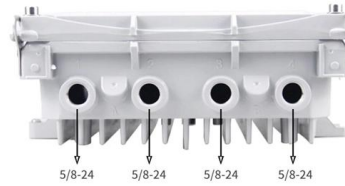
Aeons Signature SB-Series Double Section Swing-Out Wall Mount Cabinets is your turnkey solution for EIA-standard 19-inch rackmount equipment in network

[Contact Us](#)



12U Wall-Mounted Network Cabinet: Features and Installation Guide

Efficient Cooling: The top of the 12U wall-mounted network cabinet features ventilation openings, which accelerate heat dissipation. Additionally, strategically placed cable entry points on the top, bottom,



[Contact Us](#)



RackPath 6U Wall Mount Server Cabinet Network Rack

Product description This RackPath Performance Series wall mount network server cabinet is designed to provide temperature-controlled accommodation for your

[Contact Us](#)

Size Matters - Especially When Choosing A Network

Tech Tip #7 - Choosing Cabinet Doors Here are today's tips for determining the which doors to choose on your next cabinet. - If your cabinet will house lots of



[Contact Us](#)



Optimize Network Cabinet Performance

Discover how proper ventilation and cooling are crucial for network cabinet performance. Learn to prevent overheating, ensure equipment longevity, and

[Contact Us](#)



FS 42U GR-Series Network & Server Cabinet Tutorial

This post makes an overview of FS 42U GR-Series network & server cabinet, including 42U GR600-series black server cabinet and 42U GR800-series network & server cabinet. Moreover,

[Contact Us](#)



Network cabinet design considerations

Several cooling device designs for network cabinets that have been proven to dissipate heat include perforated front and rear doors and vented roofs. Air flow

[Contact Us](#)



Cmple - 6U Wall-Mount Server Cabinet with Glass

Get organized with the 6U wall mount cabinets from Cmple® with a universal design to house 19" rack-mountable equipment. Constructed with high-quality cold-rolled

[Contact Us](#)



How SwitchAir Channels Cool Air Through Top-of-Rack (TORS)

That is, cool air enters the equipment in the front, picks up heat from the internal components, and exits out the back at a warmer temperature. This is predominantly true for most hardware.

[Contact Us](#)





D-RKCB30--WW-ENG- EnergyEffDataCentCabSys dd

Improved sealing coupled with containment leads to a \$500 annual savings in cooling costs per cabinet for high density applications at \$.10 per kWh at 15kW per cabinet7. Inlet Air Temperature Gradients



[Contact Us](#)



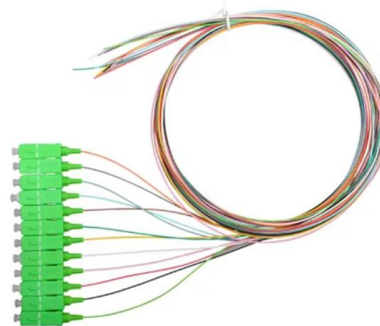
Installing the Bottom Front Cabinet Air Baffle

If an air baffle kit (2021-K223) was ordered, at the front of the cabinet, slide the metal part of the baffle under the front lip of the cabinet cross member. Align the swage nuts in the baffle to the

[Contact Us](#)

Network Cabinet & Rack-Management Best Practices , ACCL

Network Cabinet & Rack-Management Best Practices Tiny rooms, huge consequences A network cabinet looks innocuous: a black steel box humming in an alcove behind reception. Yet the switches,



[Contact Us](#)



Cabinet Cooling and Ventilation

Optimal Cabinet Fan Configurations and Positioning All ventilation fan systems should contain an intake and an exhaust variable, which can be fans or

[Contact Us](#)



Routing cables through the upper and lower air baffles

Route all cables (signal, power, and so on) at the rear of the rack so that they enter or exit the cabinet through the top and bottom air baffles. Bundle cables together in a rectangle so that the air-baffle

[Contact Us](#)



9020rax.mif

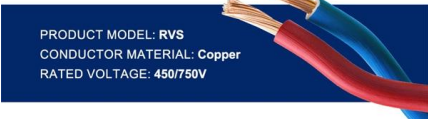
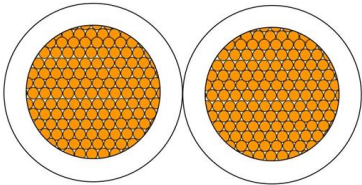
To ensure the minimum bend radius for fiber optic cables, the front mounting rails of the cabinet should be offset from the front door by a minimum of 3 inches (7.6 cm), and a minimum of 5 inches (12.7

[Contact Us](#)

Air Baffle Design , Air Baffles , Plenum Baffles

Custom Juniper Networks Air Baffles and Air Plenums The Juniper Air Baffle / Air Plenum is an essential component for optimizing airflow management in

[Contact Us](#)



Cabinet Doors & Panels , GAW Technology

Front and back rack cabinet doors and side panels Gaw has a wide variety of front and back rack cabinet doors and side panels to keep your network equipment secure. Our louvered and mesh

[Contact Us](#)



How do I mitigate airflow & heat inside the cabinet?

With the looseness (in terms of airflow) of the front door, you're going to want positive pressure. That wood shelf is going to act as a baffle effectively cutting the space

[Contact Us](#)



The Use of In-Cabinet Ducting to Improve Inlet Air Temperatures

Network switches in data centers are often cooled using side-to-side airflow because this architecture allows the front surface of the chassis to be dedicated to I/O, maximizing port density and helping to

[Contact Us](#)

RackPath 9U Wall Mount Server Cabinet Network Rack

Product description This RackPath Performance Series wall mount network server cabinet is designed to provide temperature-controlled accommodation for your

[Contact Us](#)



Contact Us

For datasheets, pricing, or custom fiber access solutions, please visit:
<https://frindel.es>