

Blackening at the connection point of the AC busbar





Overview

Also look for evidence of shrunken or melted back insulation on cables attached to the bus bar. Bus bar connectors are the unsung heroes of electrical systems, providing efficient, low-resistance connections for distributing power across components. The busbar is exposed to (sulphuric fume) which turned into [sulphuric acid] with the wet surrounding air. Busbar is usually made from good conductive materials such as copper or aluminum.



Blackening at the connection point of the AC busbar



How to prevent busbars from overheating

The result we discussed-----Oxidation,Corrosion,Overheating. The blackening in the picture is a result of overheating, which can be caused by excessive current or poor connections.

[Contact Us](#)

Troubleshooting Common Issues with Bus Bar Connectors

Telltale signs include melted insulation or a burned smell near the connectors. To troubleshoot, measure the operating temperature with a

[Contact Us](#)



Thermal-statistical approach for diagnosis of bus bar degradation in

This study presents an innovative thermal-statistical approach for diagnosing the condition of nickel-coated copper bus bars in MCFC power plant. The primary objective was to develop a non

[Contact Us](#)



Why Does The Tinned Copper Busbar Turn Black?

The tin plating layer on the surface of copper busbars in high temperature, high humidity, and high oxygen concentration storage environments



Thermal Analysis of Busbars from a High Current Power

Copper busbar technology is widely used with the aim to achieve electrical connections with power distribution systems because of their flexibility

[Contact Us](#)



Reliability and Maintenance of Bolted Busbar Connections

Objectives The objective of this report is to document the technical basis for maintenance of bolted electrical connections such that maintenance personnel may easily develop effective maintenance

[Contact Us](#)



Bus and Busbar Explained for Electrical Systems , Fuspan

Confused about "bus" versus "busbar" in electrical systems? This common mix-up can cause problems in project planning. Let's clear up the

[Contact Us](#)



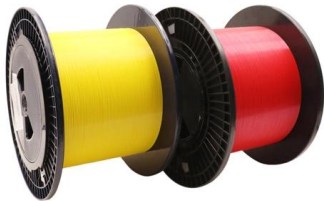
Power Applications Using High-force Press-



Fit

Even though these test results verify that the functionality of the high force press-fit connection is well-maintained through the creep of the copper busbar, we are also continuing to define additional test

[Contact Us](#)



Busbar Colour Turn to Black

Look for missing or vaporized connection lugs. Also look for evidence of shrunken or melted back insulation on cables attached to the bus bar. The

[Contact Us](#)

Corrosion problems and solutions to protect busbars in

Periodic inspection: Check the busbar surface, joints, and contact points to detect signs of corrosion and damage. Timely repair: Repair or replace

[Contact Us](#)



Engineering art: ACB to busbar connections

Loose connections have high electrical resistance, which leads to overheating at the joint - the 'hot joint' failure. See the Copper Development

[Contact Us](#)



Discoloration of busbar components , Information by Electrical

Bad breaker to bus connection at the top at some point in the past- that definitely has overheated. Agree with ptonsparky about the likely hood dust/corrosion on the other places and

[Contact Us](#)



How To Prevent Copper Busbar Corrosion?

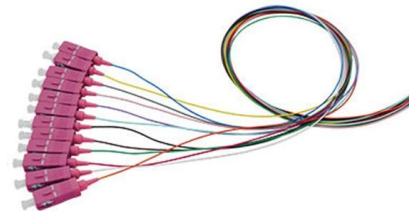
Although this layer of copper oxide film has a certain protective effect, its conductivity is not as good as pure copper. If it is not removed, it will increase

[Contact Us](#)

How To Prevent Copper Busbar Corrosion?

Insulation of copper busbars is critical for electrical safety, preventing short circuits and maintaining system integrity. Specific requirements depend on

[Contact Us](#)



Busbars and Connectors in HV and EHV installations

In other words, Busbar is a junction where the incoming and outgoing feeders current meets i.e. it collects the power at single point. Busbars for Outdoors Installations

[Contact Us](#)



Busbar Processing & Installation: Your Ultimate Guide

These guidelines govern the busbar processing and installation procedures for all low-voltage switchgear and power distribution enclosures

[Contact Us](#)



Busbar Product Issues: Common Problems Prevention

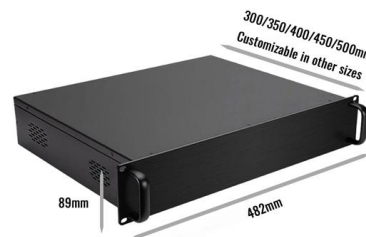
In this article, we explore the most common Busbar Product Issues, how to identify defects, and effective preventive maintenance strategies. Whether you're

[Contact Us](#)

Busbar Fabrication: Techniques for Efficient Assembly

Improve your production line with effective busbar fabrication techniques and efficient assembly procedures.

[Contact Us](#)



What Is A Busbar - Power Distribution In Electrical

A busbar is a rigid conductor, typically made of copper or aluminum, that serves as a common connection point for multiple circuits within electrical enclosures. It

[Contact Us](#)



4 common causes of copper busbar failure

Symptoms: Bent, twisted, or fractured busbars, damaged insulators, displaced connections.
Corrosion: Causes: Exposure to moisture, corrosive

[Contact Us](#)



8-Port PLC Fiber Splitter Box

12-Port SC Fiber Splitter Box

Size: 235*215*75mm
Material: ABS, IP65,



Common 5 Busbar Insulator Failures and How to

Learn about the top 5 busbar insulator failures, their causes, impacts, and prevention strategies to ensure safety and reliability in electrical systems.

[Contact Us](#)

How to fix bad contact on busbar?

I pulled it and attempted to move another breaker to this slot and it did the same. So it seems I have some sort of corrosion on this slot of the busbar. I was wondering

[Contact Us](#)



Causes & Solutions for Busbar Overheating at

Busbar connections are critical components in power distribution systems, yet overheating at these junctions remains a leading cause of equipment failure. This

[Contact Us](#)



Foil type busbar seems to be a burnt why ? , Eng-Tips

This is evident when you dismantle a good overlapping joint, the contact surfaces are still bright, NOT blackened at all. However, if the contact surfaces are blackened or sign of over

[Contact Us](#)



What is a Bus Bar and Its Importance in Electrical Systems

When it comes to understanding the intricate world of electrical systems, the term " bus bar " often emerges. But what exactly is a bus bar, and why is it so crucial in electrical setups? In this article, we

[Contact Us](#)



Some Misconceptions about Standards

Where the bus has experienced prolonged exposure to air, it may be necessary to clean the mating surfaces before assembling the joint. Because the silver is a soft material, tightening the joint will

[Contact Us](#)



Busbar Deisgn Guide

Typical Busbar Sizes If this program recommends sizes that do not fit into the ranges below, change either the number of conductors or the section thickness of the busbar and recalculate the minimum

[Contact Us](#)

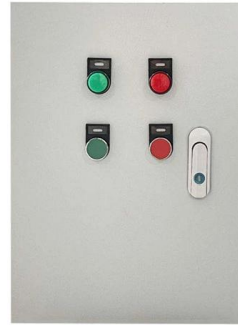




Some Misconceptions about Standards

The plating used on bus bars is only required at the connection points and may be silver or tin as required by the environment where the switchgear is applied. Powell uses copper as the primary

[Contact Us](#)



What is a Busbar? A Detailed Guide

Busbars essentially serve as electrical highways, guaranteeing that power is delivered effectively and safely to where it is required. Connecting many

[Contact Us](#)

Contact Us

For datasheets, pricing, or custom fiber access solutions, please visit:
<https://frindel.es>