

# **Belarusian Low Insertion Loss Splitter Single Mode**





## Belarusian Low Insertion Loss Splitter Single Mode

---

CAT 7 FTP JACK



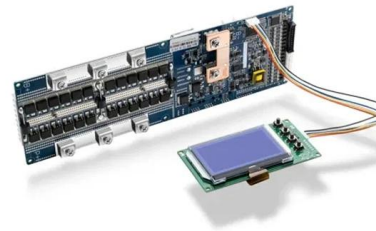
### **1x8 PLC Splitter Bare Fiber, 250um, Singlemode**

These splitters offer low insertion loss and low polarization sensitivity. Available in 2, 4, 8, 16, and 32-channel configurations, they have bend-insensitive cables and

[Contact Us](#)

### **1x8 Fiber Optic PLC Splitter SC/APC Single mode**

Fiber optic splitters features high reliability, wide operating wavelength range and good channel-to-channel uniformity, and is widely used in PON networks to realize optical signal power splitting.



[Contact Us](#)



### **(PDF) Compact and low-insertion-loss polarization beam**

A polarization beam-splitting multimode filter using pixelated waveguides has been presented and experimentally demonstrated in this paper.

[Contact Us](#)

### **Comprehensive Guide to Optical Splitters**

PLC splitters have the advantages of low insertion loss, high return loss, and high channel uniformity, and are particularly suitable for connecting

[Contact Us](#)



### **MPO MTP factory**

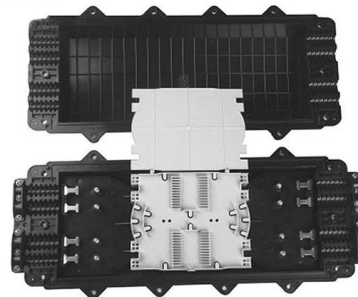
Adjustable 0db 30db Female To Female Low Insertion Loss Fiber Optic ST Attenuator 1x4 SC/APC Single Mode G657A1 LGX Cassette Type Fiber Optic PLC Splitter in FTTx 24F MTP MPO LC

[Contact Us](#)

### **SM G657A 1x8 PLC Fiber Optic Splitter with Low Loss**

Single Mode SM G657A 1x8 PLC Fiber Optic Splitter featuring low insertion loss, low polarization dependent loss, and good channel uniformity for FTTX deployment.

[Contact Us](#)



### **An ultra-broadband, and low loss 3-dB optical power splitter with**

This paper proposes and demonstrates a new design for a 3-dB optical power splitter with curvature optimized adiabatic taper which can achieve ultra-broadband operation, low loss, compact,

[Contact Us](#)



## 1x8 PLC Splitter with SC/APC Connectors

Our 1x8 PLC Splitter uses advanced planar lightwave circuit (PLC) technology to ensure low insertion loss, excellent signal uniformity, and long-term performance.

[Contact Us](#)



## 1x2 / 2x2 Single Mode Ultra-Low PDL Broadband Fiber Optic

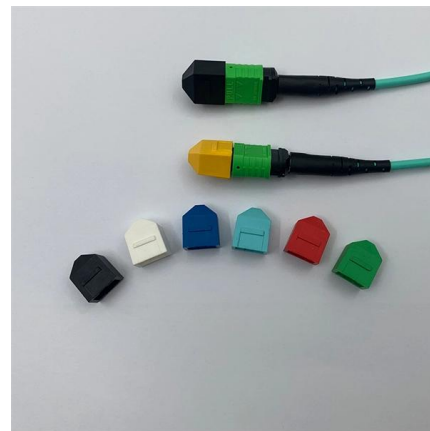
It features good uniformity, low excess loss and very low polarization sensitivity. The device is ideal for splitting or combining light with exceptional performance over a wide wavelength range.

[Contact Us](#)

## 1x8 Fiber PLC Splitter Single Mode Blockless PLC Fiber Optic

PLC (Planar Lightwave Circuit) Splitters are Single Mode Splitters with an even split ratio from one input fiber to multiple output fibers. This 1x8 Fiber PLC Splitter with 1 input and 8 output fibers with an

[Contact Us](#)



## Compact on-chip power splitter based on topological photonic crystal

Benefiting from the valley-locked propagation mode at the interface of TPCs with different topological phases, the proposed power splitter has negligible backscattering around the sharp bendings and

[Contact Us](#)



## PLC Splitter Performance: IL & RL for PON Networks

Learn how insertion loss (IL) and return loss (RL) impact PLC splitter performance in FTTx and PON networks, with standards, factors, and selection tips.

[Contact Us](#)



## Isolator Polarization Beam Combiner/Splitter (IPBC/IPBS Series)

Description tion beam combining and optical isolation in one integrated component. The most common application is to combine two pump lasers into one single fiber to double the pump power in EDFA or

[Contact Us](#)

## Compact and Low-Insertion-Loss 1xN Power Splitter in

By using the finite difference time domain method and particle swarm optimization algorithm, our proposed 1N optical power splitter can be optimized to realize compact size, good

[Contact Us](#)



Ordering information

NO.	1	2	3	4	5	6
Model	SP1201	SP1202	SP1204	SP1205	SP1206	SP1208
Product name	1x2 Patch Panel	1x2 Patch Panel	1x4 Patch Panel	1x5 Patch Panel	1x6 Patch Panel	1x8 Patch Panel
Illustration						
NO.	1	2	4	1	2	4
Maximum number of cores	144	288	576	144	288	576
Product code (including module and adapter)	402.07.0711144-001	402.07.0711288-001	402.07.0711576-001	402.07.0711144-001	402.07.0711288-001	402.07.0711576-001
Standard color code	PAU0005	PAU0005	PAU0005	PAU0005	PAU0005	PAU0005

## 4 Important Technical Indicators of Fiber Optic Splitters

Considering both inherent loss and splitting ratio. Therefore, differences in insertion loss between different fiber optic couplers do not

[Contact Us](#)

## Mid-Infrared, Ultra-Broadband, Low-Loss,



## Compact Arbitrary Power

Abstract: We designed and demonstrated TE-mode arbitrary power splitters based on adiabatic mode evolution. The power splitters are designed with a footprint of smaller than  $12 \times 2.9$

[Contact Us](#)



## Insertion Loss - optical power, fiber connector, splice

Examples of Insertion Loss If an optical device is inserted into a setup, some of the optical power may be lost in the device or at optical interfaces. Some examples:

[Contact Us](#)

## Single Mode Multi-Wavelength Passive optical splitter

-mode Fiber PLC splitter (Planar Lightwave Circuit). These PLC splitters provide a low-cost solution for optical signal distribution in PON network.

[Contact Us](#)



## Mid-Infrared, Ultra-Broadband, Low-Loss, Compact Arbitrary Power

Broadband arbitrary power splitters with low insertion loss are imperative for the realization of high density PICs. Circuit designers can exploit broadband power splitting devices for the realization of

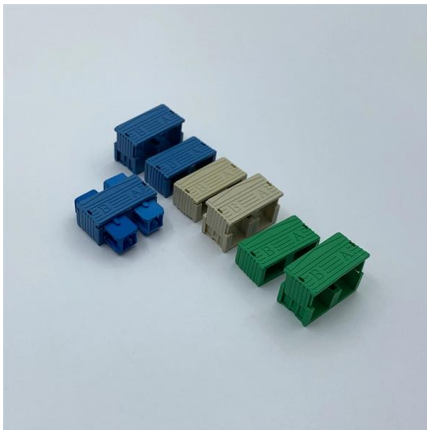
[Contact Us](#)



## Understanding Optical Splitter Loss

Understanding Optical Splitter loss ratios and insertion loss is fundamental to building a reliable fibre optic network.

[Contact Us](#)



## Insertion loss reduction between single-mode fibers and diffused

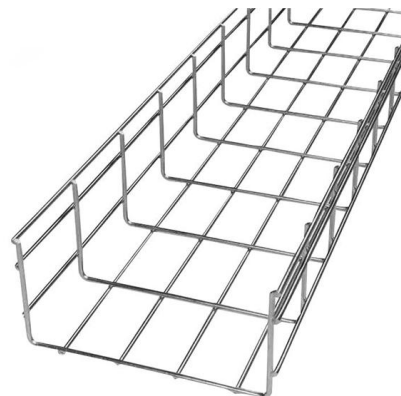
Jacques Albert and Gar Lam Yip Methods of reducing the insertion loss between single-mode fibers and graded-index channel waveguides, namely, annealing and backdiffusion, are analyzed theoretically

[Contact Us](#)

## Improved inverse design of polarization splitter with advanced

In this paper, we combine new machine learning methods with the principle of multimode interference to propose a novel design for a polarization beam splitter.

[Contact Us](#)



## Understanding Power Splitters

The power combiner will exhibit an insertion loss that varies depending upon the phase and amplitude relationship of the signals being combined. For example, in a 2 way 0° power splitter/combiner, Fig. 1

[Contact Us](#)



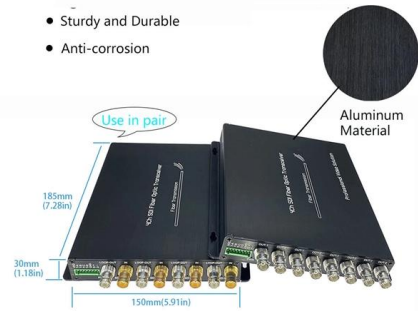
## Compact and Low-Insertion-Loss 1×N Power Splitter in Silicon Photonics

By using the finite difference time domain method and particle swarm optimization algorithm, our proposed 1×N optical power splitter can be optimized to realize compact size, good

[Contact Us](#)

High Quality Aluminum Housing with Compact Size

- Sturdy and Durable
- Anti-corrosion



## Single Mode Broadband Splitter

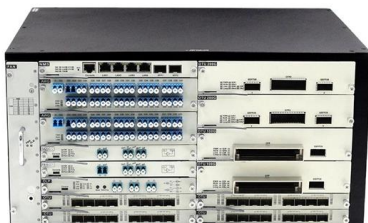
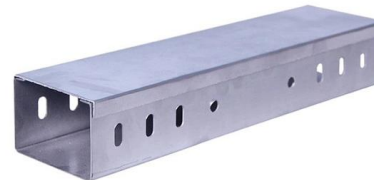
Single-mode fused biconical tapered (FBT) optical splitters are available in a wide range of split ratios to suit a variety of applications

[Contact Us](#)

## Blockless PLC Fiber Splitters Datasheet , FS

Overview Planar lightwave circuit(PLC) splitter is a type of optical power management device that is fabricated using silica optical waveguide technology to distribute optical signals from Central

[Contact Us](#)



## DTS0095

Both 1XN and 2XN splitters can be constructed in this fashion with as many as eight or more outputs, with both low return losses and low insertion losses. This design is extremely flexible, allowing one to

[Contact Us](#)



**AN10-006**

Since the 0° power splitter is a reciprocal passive device it may be used as a power combiner simply by applying each signal singularly into each of the splitter output

[Contact Us](#)



### **Ultra-Compact Power Splitters with Low Loss in**

In this paper, we list three ultra-compact and low-loss 1 × 3 power splitters with arbitrary input and output directions. They have the same compact

[Contact Us](#)

### **A compact and low-loss 1×8 optical power splitter using silica-based**

In this paper, a compact, low-loss and good-uniformity 1×8 optical power splitter with new Y-branch structure is demonstrated using silica-based PLC technology on quartz substrate.



[Contact Us](#)



### **1x2 SingleMode Mini Module Blockless PLC Splitter**

The 1x2 SingleMode Mini Module Blockless PLC Splitter is an optical fiber splitter used in single-mode fiber systems, designed to evenly distribute the light signal from a single input port to two output

[Contact Us](#)



## Contact Us

---

For datasheets, pricing, or custom fiber access solutions, please visit:  
<https://frindel.es>