

Austrian Level 2 Explosion-proof Distribution Box



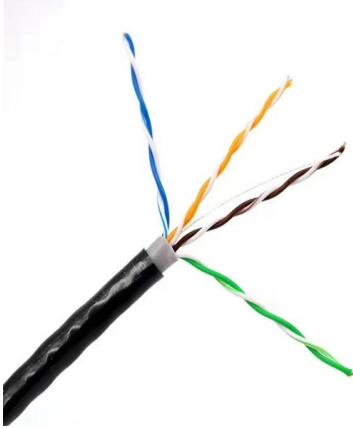


Overview

The enclosures are certified Ex d IIB+H2 and Ex tb as well as "explosion-proof". They are available in many sizes, a wide range of operating elements and monitoring functions can be integrated. Atexdelvalle offers world-class explosion-protected solutions guaranteeing highest quality and performance with no compromise. Manufacture custom made Local Control Stations & Distribution Boxes, local control panel boards and stations, explosion protected control units, distribution.



Austrian Level 2 Explosion-proof Distribution Box



The New Standard in Aluminum Explosion-Proof Solutions , CZ

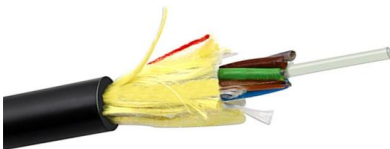
Product Introduction: CZ1490 Explosion-proof Distribution Box. CZ1490 explosion-proof junction box (IIB+H, IIIC/Db), with EU ATEX explosion-proof certification, EAC Customs Union

[Contact Us](#)

Control Panels & Distribution Boards

Control Panels , atex & ieceX Explosion Proof & Hazardous Area Zone 1 & Zone 2 Thorne & Derrick International, based in the UK, are the leading designers and

[Contact Us](#)



Explosion-proof steel distributors (Ex d) , GENERI, s.r.o.

They serve for distribution and protection in AC and DC networks with the possibility of signalling of operating states, measurement of electrical quantities, regulation, switching and control of auxiliary

[Contact Us](#)

Ex Distribution Boards & Enclosures , mlx-ex

Ex distribution boards - Explosion-proof distribution boards designed for Ex and ATEX areas. Customizable, safe, and certified electrical solutions.



Explosion proof distribution box standards and installation issues

I. Explosion-proof distribution box general standards Distribution box production technology indicators to meet the specifications and design requirements, and in accordance with the provisions of the

[Contact Us](#)

Explosion Proof Certification , SGS Austria

Our explosion proof certification services provide you with third-party conformity assessments and access to various certification schemes, including ATEX, TR CU (EAC), USTC (US and Canada),

[Contact Us](#)



Terminal and Junction Boxes (Ex d) , Explosion Protection

These sturdy solutions are certified according to global standards such as ATEX, IECEx, UL, and others, making them suitable for safe signal and power distribution in Zone 1, Zone 2, Zone 21, Zone 22, or

[Contact Us](#)

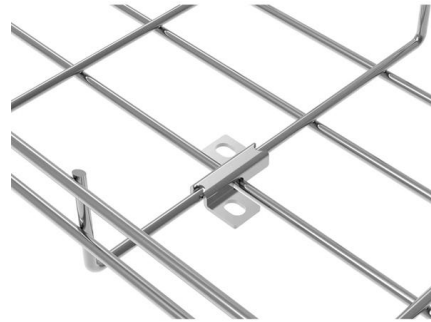




Custom CZ1490 Explosion-proof distribution boxes

Two or more flame-proof boxes can be combined with cable bushings CZ2000/2B to use CZ1490/1 Explosion-proof distribution box has flame-proof cable glands for

[Contact Us](#)



Control and Distribution Panels , Ex d , EJB Series

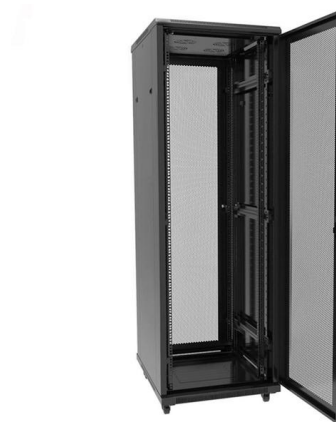
The enclosure series EJB forms the optimal basis for the application-specific configuration of terminal boxes, control stations as well as control and distribution

[Contact Us](#)

CE92 Explosion-proof power distribution boxes

Product Details: Ex mark:Ex de IIC T4 Gb DIP A21 TA,T4 Intended use:zone 1,zone 2,zone21,zone22 Degree of protection:IP66 Structure:Combined modulars

[Contact Us](#)



| | |
|-------------------|--------------------------------------|
| PRODUCTION NAME | Frequency conversion control cabinet |
| PROTECTION DEGREE | IP55 |
| VOLTAGE | 220/380V |
| SIZE | customized as required |
| MOUNTING WAY | Floor-standing |
| APPLICATION | Indoor and outdoor |

Explosion Proof Distribution Box , ATEX Transformer Supplier

We supply certified explosion proof distribution box & Atex Transformer -Appleton, ATKON, CZ, CEAG, brands for safe and reliable industrial use.

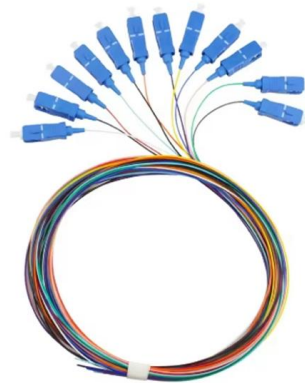
[Contact Us](#)



Ex Local Control Stations & Distribution Boxes

Atex control stations, explosion protected control units and distribution boxes made stainless steel maritime grade AISI 316L or AISI 304L. Atex Delvalle provides a

[Contact Us](#)



Ex-Proof & Flameproof Enclosures & Junction Box , Supermec

Ex-Proof & Flameproof Junction Boxes & Enclosures Supermec ATEX Junction Box & Enclosures are designed to satisfy most of our clients' requirements for CONTROL explosion-proof and flameproof

[Contact Us](#)

5 Key Factors to Consider When Selecting Explosion Proof Distribution Boxes

Selecting explosion-proof distribution boxes protects the safety of your staff in any potentially hazardous workplace. HEXLON stands out as a trusted provider of explosion-proof

[Contact Us](#)



Top 3 Facts About Explosion Proof Distribution Box & Electrical

Learn the top 3 facts about explosion proof distribution boxes & electrical enclosures--certifications (ATEX, IECEx, NEMA), durable materials, and customization for

[Contact Us](#)



Atex Certified Junction Boxes, Terminals, Sockets &

Explosion Proof Junction Box / Connectors These explosion proof junction boxes / terminal boxes, plugs, sockets & connectors are for use in explosive atmospheres

[Contact Us](#)



The New Standard in Aluminum Explosion-Proof Solutions , CZ

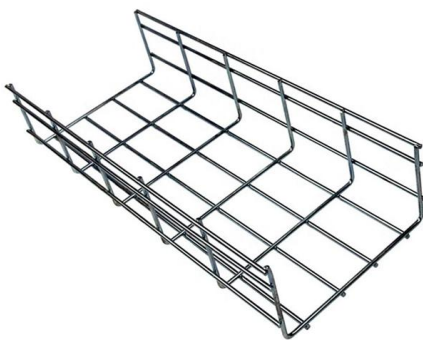
Suitable for potentially explosive hazard zones (Zone 1/2, Zone 21/22) and harsh working hazard areas.

[Contact Us](#)

Control and Distribution Panels , Ex d , EJB Series

The enclosures are certified Ex d IIB+H2 and Ex tb as well as "explosion-proof". They are available in many sizes, a wide range of operating elements and

[Contact Us](#)



DISTRIBUTION BOARDS

Extol International are the leading suppliers of Control Panels & Distribution Boards for hazardous areas and explosive atmospheres - a comprehensive range of Explosion Proof control panels are available

[Contact Us](#)



HRMD91 Explosion proof Distribution Box (Ex d IIB+H2)

HRMD91 Explosion proof Distribution Box
Explosion protection to - IEC - CENELEC - NEC
Can be used in Zone 1 and Zone 2 Zone 21 and
Zone 22 Class I, Zone 1

[Contact Us](#)



Control panels , Distribution boards , Ex , Ex d , Ex de , ATEX

Reliable power distribution increases both
system availability and the safety of personnel
and systems. Thanks to our modular system, the
right solution for any application is just waiting to
be put together.

[Contact Us](#)

Ex Equipment

ROSE Aluminium, Polyester and Stainless-Steel
Ex Enclosures and Control Stations assure
reliable protection for electrical distribution
systems in explosion

[Contact Us](#)



Distribution box solutions for explosion- proof environments in

Explosion-proof distribution boxes represent
where regulatory wisdom meets engineering
excellence. What appears as simple protective
enclosures are actually sophisticated safety
systems honed

[Contact Us](#)



Energy Distribution

BARTEC offers one of the most extensive ranges of explosion-proof and substance-resistant components, devices, and systems for controlling, switching, and

[Contact Us](#)



HRMD92 Explosion proof Distribution Box (Ex d IIB+H2)

Warom Explosion proof Distribution Box (Ex d IIB+H2) in 316 stainless steel. Available with a wide range of built in components.

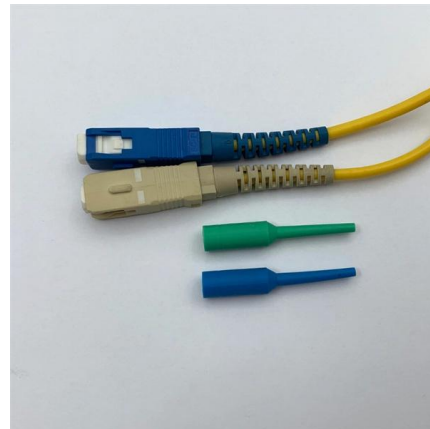
[Contact Us](#)



Ex Enclosure Systems

For electrical distribution in potentially explosive atmospheres, ROSE Ex enclosures made of aluminum, polyester and stainless steel, as well as Control Stations,

[Contact Us](#)



Explosion-Proof Distribution Box

The distribution box (explosion-proof) is an aluminum alloy housing, electrostatic spraying, in accordance with the explosion-proof provisions of GB3836.2-2000, for the distribution of electric

[Contact Us](#)



Explosion Proof Enclosures

Ex-Proof & Flameproof Junction Boxes & Enclosures Supermec ATEX Junction Box & Enclosures are designed to satisfy most of our clients' requirements for CONTROL explosion-proof and flameproof

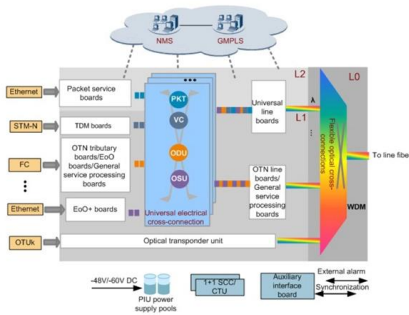
[Contact Us](#)



DISTRIBUTION BOARDS

These are available in a range of materials including Stainless Steel, GRP & Sheet Steel from IP42 (Indoor) to IP 66 (Outdoor) Applications.

[Contact Us](#)



Contact Us

For datasheets, pricing, or custom fiber access solutions, please visit: <https://frindel.es>