

Astigmatism using laser diode collimation method





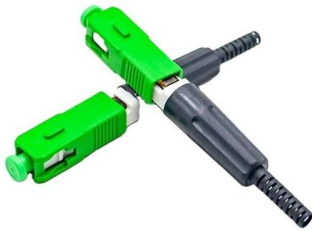
Overview

A single biconvex microlens is proposed to correct the astigmatism and ellipticity of a laser diode (LD) beam and focus it to a smallest circular spot. In addition to the divergence, such sources may also show astigmatism between two directions. quality of beam collimation = ?

□ Astigmatism of source causes asymmetric & stronger wavefront error. Based on accurate far-field model of high-power laser diode, a design method of binary optical element for laser diode beams, which can correct the astigmatism of the laser beam, has been developed, and the principle and process has been given in detail. Correction of the astigmatism of a diode laser (2) beam is achieved by utilizing the inherent nature of anamorphic optics (8) to produce astigmatism when decollimated light enters the anamorphic optics, in conjunction with a point diffraction interferometer which provides an observable interference.



Astigmatism using laser diode collimation method



Astigmatism correction in laser diodes

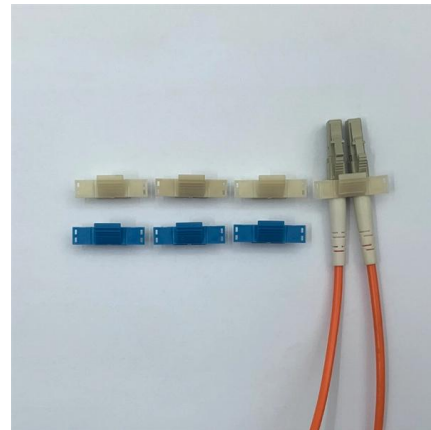
In addition to producing a light beam that is of elliptical shape, diode lasers produce a beam that has astigmatism. That is, wavefronts in different axes orthogonal to the optical axis

[Contact Us](#)

Correcting Astigmatism In Diode Lasers

Astigmatism is an inherent property of the output beam of diode lasers. In applications requiring collimation or transformation of the diode laser's beam, this astigmatism must be considered, and

[Contact Us](#)



The aberration correction of a Diode Laser

The beam needs aberration correction for spherical aberration, coma, astigmatism. The object of this project is to make the output beam from the laser diode LTO24 (wavelength=780nm, working

[Contact Us](#)

Focusing of astigmatic laser diode beam by combination of adaptive

An experimental liquid crystal compensator of laser diode astigmatism is described. This compensator consists of two adaptive liquid crystal lenses. The compensator performs focusing of an



Design method of a binary optical element for collimation of high

Based on accurate far-field model of high-power laser diode, a design method of binary optical element for laser diode beams, which can correct the astigmatism of the laser beam, has

[Contact Us](#)



Measurements of laser diode astigmatism using the beam-line method

We propose a novel method to measure the astigmatism of laser diodes that is based solely on power measurements and does not require the use of any imaging system. Experimental

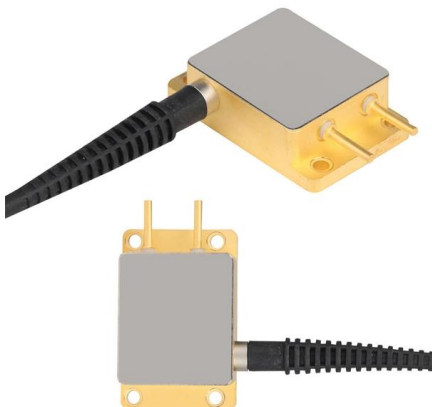
[Contact Us](#)



Laser Beam Collimation

Final Remarks Laser beams are different, depending on the type of laser (diode vs. DPSS), laser power, the method of collimation, and homogenization applied. Not

[Contact Us](#)





US5239414A

In an optical system including a laser diode with astigmatism such that the apparent source position in two orthogonal axes each normal to the beam direction differ, a beam prism expander and a

[Contact Us](#)



Off-axis collimation of diode laser beams by means of single-element

Principles of single-element holographic diffractive optics for collimation of diode laser beams with a large divergence, an elliptic cross-section, and astigmatism are presented. Holographic

[Contact Us](#)

Measurement of laser diode astigmatism using the beam-line method

Abstract We propose a novel method to measure the astigmatism of laser diodes that is based solely on power measurements and does not require the use of any imaging system.

[Contact Us](#)



Semi

This IS equivalent to rotating a cylinder or variable power Unfortunately, this method introduces distortions in the wavefront, which limits its use to weak cylinders and hence diode lasers with relatively

[Contact Us](#)



Pulse Simulation Generation

Astigmatism of source causes asymmetric & stronger wavefront error. The x- and y-component of the direction vector of every ray are almost zero. The x- and y-component of the direction vector of every

[Contact Us](#)



Collimation of Astigmatic Diode Laser Beam by Objective Lens

In this example, collimation of an astigmatic laser diode is investigated with both ray tracing and field tracing techniques, and it is compared with a reference case without astigmatism.

[Contact Us](#)

Collimation of Astigmatic Diode Laser Beam by Objective Lens

Abstract Laser diodes are one of the most commonly used sources nowadays. High-power laser diodes often exhibit asymmetric divergence in two directions. They must be collimated in most applications.

[Contact Us](#)



MPO-MPO Low Smoke Halogen Free Sheath
Multimode 10 Gigabit 12 pole OM4
Insertion loss <0.35dB Return loss >50dB



Astigmatism correction in laser diodes

In accordance with the invention, correction of the astigmatism of a diode laser beam is achieved by utilizing the inherent nature of anamorphic optics to produce astigmatism when decollimated light

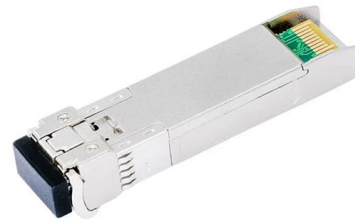
[Contact Us](#)

Microsoft Word



BEAM COLLIMATION AND INTENSITY UNIFORMIZATION OF LASER DIODE ARRAY USING LENSLETS by

[Contact Us](#)



(PDF) Design method of a binary optical element for

Based on accurate far-field model of high-power laser diode, a design method of binary optical element for laser diode beams, which can correct the

[Contact Us](#)



Detailed study of laser diode array collimation based on a tolerancing

Based on these criteria, we establish an alignment concept for the first section of a LiDAR emitter. The performance criteria are derived from the overall LiDAR system requirements and applied to an

[Contact Us](#)



Focusing of astigmatic laser diode beam by combination of adaptive

Introduction Laser diodes (LDs) are reliable and non-expensive sources of monochromatic light for different industrial and scientific applications. However, edge-emitting LDs require an

[Contact Us](#)





Correcting Beam Astigmatism in Laser Diode by the use

The uniqueness of this system is to make the collimated and uniform beam from the laser diode using single element. Earlier the authors reported the

[Contact Us](#)



Collimation of laser diode beams for free space optical communications

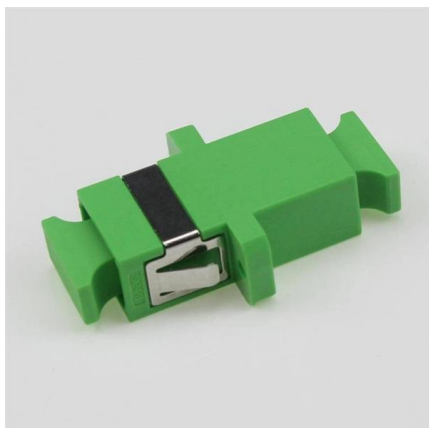
Abstract Based on a far-field asymptotic expression of diode laser beams, the collimation characteristics of a diode laser beam are investigated. In this paper we propose a method for

[Contact Us](#)

Single aspherical lens for deastigmatism, collimation, and

An astigmatic and elliptically diverging laser beam generated by a gain-guided laser diode can be converted into a collimated and circular beam with a single specially designed lens. The designed

[Contact Us](#)



Chapter 2 Laser Diode Beam Basics

Single transverse mode laser diodes are most widely used. Their beams are elliptical, astigmatic, and have large divergence. These characteristics make laser diode beams difficult to handle. In this

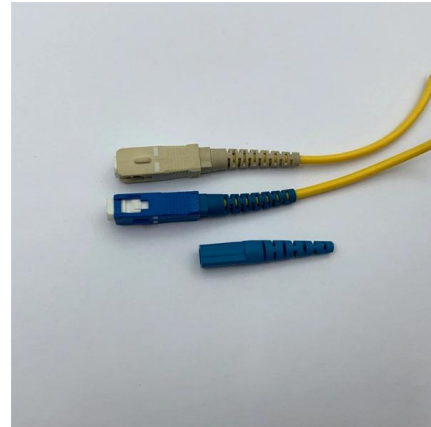
[Contact Us](#)



Laser Beam Collimation: Techniques and Best Practices

Introduction Laser beam collimation is a fundamental aspect in many analytical methods, where a continuous wave (CW) laser is often used as the

[Contact Us](#)



Collimation of Astigmatic Diode Laser Beam by Objective Lens

ch sources may also show astigmatism between two directions. In this example, collimation of an astigmatic laser diode is investigated with both ray tracing and field tracing techniques,

[Contact Us](#)



DE4311792A1

Astigmatism correction in laser-diode optical systems Abstract The invention relates to an optical system for imaging, by means of at least one imaging element, a bundle of light, subject to astigmatism, of a

[Contact Us](#)



Measurement of laser diode astigmatism

Theoretical and experimental studies are presented on the two commonly used laser diode astigmatism measurement methods: the moving-diode method and the moving-profiler method. Both

[Contact Us](#)





Contact Us

For datasheets, pricing, or custom fiber access solutions, please visit:
<https://frindel.es>