

Are the cable tray jumpers outside the connecting plate





Overview

Whether you need extra wires (jumpers) depends on if your connecting plates are tested for grounding. If the plates are UL Classified, they are strong enough to carry electricity safely by themselves. They are required to be used on locations where the tray is not continuously grounded or when splice plates that aren't UL listed are used. Cable trays are holding SOOW cords from a control trailer with starters to crusher motors but are not continuous and are in sections away from each other. Cable tray may be used as the Equipment Grounding Conductor (EGC) in any installation where qualified persons will service the installed cable tray system.



Are the cable tray jumpers outside the connecting plate



Cable tray bonding , Information by Electrical Professionals for

cable trays, or cable trays of one-piece construction, and the total cross-sectional area of both side rails for ladder or trough cable trays. (4) Cable tray sections, fittings, and connected

[Contact Us](#)

Bonding Jumpers Not Required for Standard Cable Tray Splice

It is not necessary to install bonding jumpers in parallel with the standard rigid aluminum or steel one-piece metallic bolted side rail splice plates that are the connections between the cable tray sections.

[Contact Us](#)



Practices for grounding and bonding of cable trays

Cable tray may be used as the Equipment Grounding Conductor (EGC) in any installation where qualified persons will service the installed cable tray system. There is no restriction as to where the

[Contact Us](#)

Connecting Cable Trays: Your Guide to Secure and

Learn common methods for connecting cable trays safely and efficiently. Our guide covers splice plates, quick-connects, and key tips for secure



Cable Tray Bonding , Information by Electrical Professionals for

I was going to call out for equipment bonding jumpers from each switchboard ground bus to the respective cable tray sidewall. In the past, I have seen every other cable tray support column

[Contact Us](#)



Tray bonding jumper / NEMA

Do not use splice plate bolt locations to connect jumper to cable tray. Place screw head on inside of cable tray, put jumper on outside of cable tray, add flat washer, and locknut, and tighten.

[Contact Us](#)



Are Bonding Jumpers Required for Standard Cable Tray Splice Plates?

Although you might have the best splice plates, some site conditions require the use of external copper jumpers, as they are a necessary and essential requirement to eliminate electrical

[Contact Us](#)

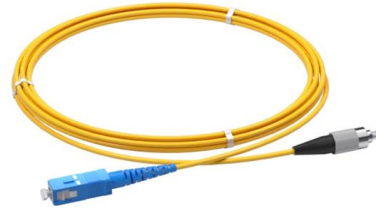




When are bonding jumpers required for use with cable tray?

GEIS, B-Line, Bonding jumpers, Cable tray They are required to be used on locations where the tray is not continuously grounded or when splice plates that aren't UL listed are used.

[Contact Us](#)



Bonding Jumpers Not Required for Standard Cable Tray

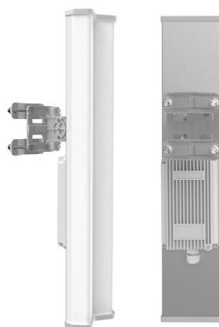
Four bolt hole splice plates (2 bolts holes for each cable tray side rail) were used. Test Current - 3,600 amperes for 14 cycles (Aluminum Cable Tray) C1 Corroded

[Contact Us](#)

Bonding Jumpers Not Required for Standard Cable Tray Splice Plates

It is not necessary to install bonding jumpers at standard rigid galvanized steel or aluminum splice plate connections or offset reducing splice plate connections or any Classified connections.

[Contact Us](#)



Practices for grounding and bonding of cable trays

A bare copper equipment grounding conductor should not be placed in an aluminum cable tray due to the potential for electrolytic corrosion of the aluminum cable tray in a moist environment. For such

[Contact Us](#)



Bonding Jumpers

Install Bonding Jumpers by bolting each lug to a 5/16 square hole located at each end of the channel. Do not use splice plate bolt or pin locations to connect the

[Contact Us](#)



CABLE TRAY

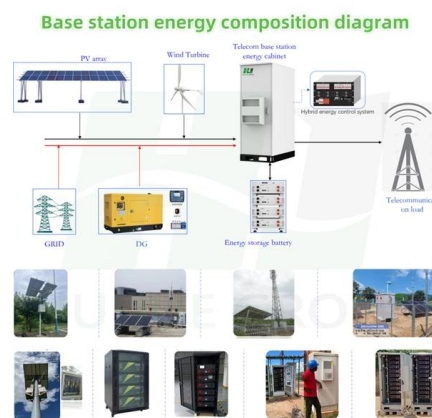
Splice plates should be placed on the outside of the cable tray, unless otherwise specified by the manufacturer, with the bolt heads on the inside of the cable tray (Figure 4.11).

[Contact Us](#)

Equipment Grounding Conductors for Cable Tray Systems

For such installations, it is best to use a covered or insulated conductor and to remove the covering or insulation where bonding connections are made to the cable tray, bonding jumpers, raceways,

[Contact Us](#)



Thermal Contraction and Expansion of Cable Tray

There are expansion joint splice plates and bonding jumpers available from cable tray manufacturers. A cable tray support should be located within 2 feet of each side of the expansion joint splice plates

[Contact Us](#)

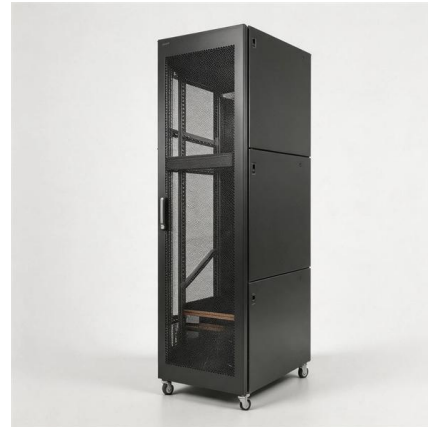




Bonding Jumpers Unnecessary for Cable Trays

The document discusses bonding jumpers for cable tray splice plates. It summarizes that: 1) Bonding jumpers are not required for standard metallic splice plates that

[Contact Us](#)



Cable Tray Thermal Expansion Guidelines , PDF

between the cable tray sections at the expansion joint splice plate location. table 6-1 Table 6-1 For simplicity, the bonding jumpers around the expansion joint splice

[Contact Us](#)



When are bonding jumpers required for use with cable tray?

They are required to be used on locations where the tray is not continuously grounded or when splice plates that aren't UL listed are used.

[Contact Us](#)



Bonding Jumpers Not Required for Standard Cable Tray Splice Plates

It is not necessary to install bonding jumpers in parallel with the standard rigid aluminum or steel one-piece metallic bolted side rail splice plates that are the connections between the cable tray sections.

[Contact Us](#)





Bonding Jumpers

Only connect to the channel. 2 AWG Soft Drawn Tin Plated Copper Stranded Cable. Extremely flexible flame retardant PVC (VW-1) Insulation. Resists abrasion, oil,

[Contact Us](#)



FOR EMAIL LOW RESOLUTION

Outside Return Flange Cable Trays are produced with flanges returning towards outside of the tray. These tray systems are produced for Medium, Heavy, Extra Heavy and Double Extra Heavy Duty

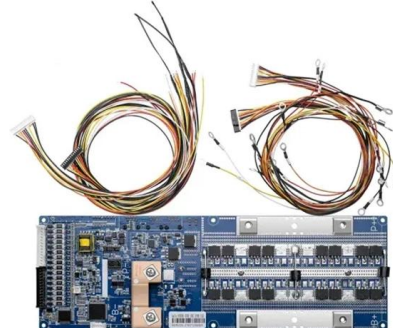
[Contact Us](#)



Earthing of cable tray body , Eng-Tips

Why we put yellow/green earthing connector between parts of cable trays? does this have any relation to the bolts& nuts connecting the parts of the cable tray? (they cause a hotspot if any

[Contact Us](#)



392.44 Expansion Splice Plates.

An expansion splice plate may have slotted holes to allow for movement in the cable tray. A bonding jumper is required where cable tray systems are mechanically

[Contact Us](#)





Equipment Grounding Conductors for Cable Tray Systems

For such installations, it is best to use a covered or insulated conductor and to remove the covering or insulation where bonding connections are made to the

[Contact Us](#)



Cable Tray Grounding: Power, Instrumentation, and

Cable tray systems are in the path of ground fault currents. Cable tray systems are bonded together through their bolting, connectors splice plates, clamps, and bonding jumpers where there are gaps in

[Contact Us](#)

A Guide to Cable Tray Accessories and Their Functions

Explore a detailed guide to cable tray accessories and understand their uses in ensuring safety, stability, and efficiency in electrical system

[Contact Us](#)



Bonding jumper for cable tray being used as EGC?

If the cable tray is listed for use as a equipment grounding conductor, I don't see any reason to run a separate wire type equipment grounding conductor. I don't believe incompetent

[Contact Us](#)



Bonding Jumper-Cable Tray) , PDF , Equipment

Do not use splice plate bolt locations to connect jumper to cable tray. Place screw head on inside of cable tray, put jumper on outside of cable tray, add flat washer,

[Contact Us](#)



Five Common Cable Tray Installation Defects and

Stop repeating the same cable tray mistakes! This guide reveals 5 common defects and provides code-compliant prevention measures.

[Contact Us](#)

Contact Us

For datasheets, pricing, or custom fiber access solutions, please visit:
<https://frindel.es>