

# **Are relay protection devices necessary**





## Overview

---

The first protective relays were electromagnetic devices, relying on coils operating on moving parts to provide detection of abnormal operating conditions such as over-current,, reverse flow, over-frequency, and under-frequency. Protective relays are indispensable in maintaining the safety and reliability of power systems. They provide various functions to detect and isolate faults, ensuring minimal damage to equipment and continuity of power supply.



## Are relay protection devices necessary

---



### Understanding Protective Relays in Electrical Power Systems -

Protective relays are vital components in electrical systems, ensuring system stability and safety by detecting and responding to faults. Their ability to automatically isolate faulty sections reduces

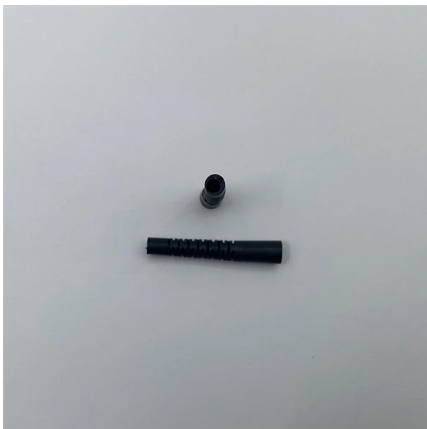
[Contact Us](#)

### The Role of Protection Relays in Power Systems and an

Protective relays are critical in power systems because they serve as decision-making devices that ensure the safe operation of power grid. They play a key role in power system protection.



[Contact Us](#)



### Relays Part 4: The Protective Relay Basic Theory

The types of protective relays that exist are overcurrent, electromechanical, directional, distance, pilot, and differential relays. The circuit diagram of the protective relay is made up of current

[Contact Us](#)

### What is Protection Relay?

A protection relay is a crucial component of electrical systems that safeguard infrastructure, employees, and equipment from electric problems and

[Contact Us](#)



### Types of Electrical Protection Relays or Protective Relays

A protective relay is an automatic device that detects abnormalities in an electrical circuit and closes its contacts. This action completes

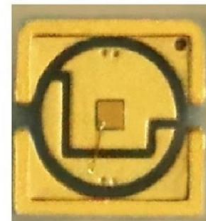
[Contact Us](#)



### Understanding Protection Relays in Electrical Power Systems

This device plays an essential role in monitoring electrical systems, detecting faults, and initiating actions to prevent further damage to equipment and ensure the safety of personnel. In this article, we

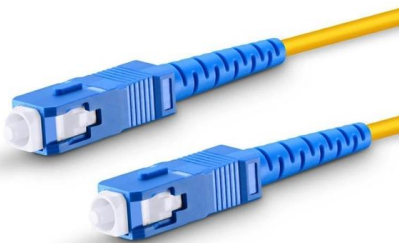
[Contact Us](#)



### Protective Relaying

Typical Relay and Circuit Breaker Connections  
Protective relays using electrical quantities are connected to the power system through current

[Contact Us](#)



### Why Are Circuit Protection Devices



## Important? , Deta Electrical

Understand the role of circuit protection devices in the electrical engineering world, and how they are used to mitigate danger. Learn more with Deta.

[Contact Us](#)



## Protective Relay Technology: Safeguard Electrical Systems

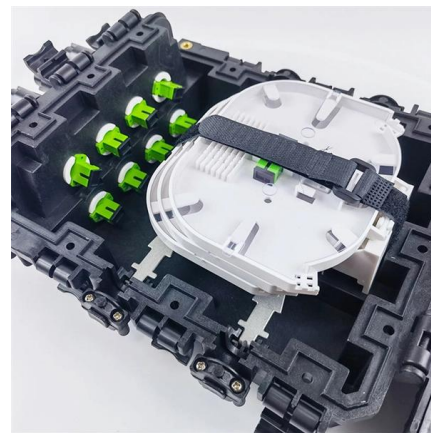
These pivotal devices not only safeguard our electrical infrastructure from potential catastrophes but also facilitate swift power system repairs,

[Contact Us](#)

## Voltage Protection Relay: Working Principle and Functions

A voltage protection relay is an essential device to keep electrical systems running efficiently and safely. These devices are designed to suit many unique situations.

[Contact Us](#)



## A Complete Guide to Protective Relays and Their Role

Like any electrical device, protective relays require routine maintenance. Accumulated dust, mechanical wear, and vibrations from nearby

[Contact Us](#)



## Protective Relay , Fundamental Requirements of

A Protective Relay is a device that detects the fault and initiates the operation of the circuit breaker to isolate the defective element from the rest of the system.

[Contact Us](#)



## Protective Relay: Working, Types, and Applications

Learn about protective relays, their working principle, types, and applications in power systems. Discover how relays protect transformers,

[Contact Us](#)



## Huijue engineering specific Fiber optic

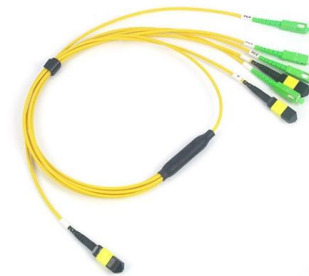
HJ GROUP offers a wide variety of product types for you to choose from.



## Understanding Protection Relays: Importance and

Discover the importance of protection relays in safeguarding electrical equipment. Learn about types like single-phase, three-phase, voltage, and

[Contact Us](#)



## Understanding Protective Relays in Power Systems

Protective relays are indispensable in maintaining the safety and reliability of power systems. They provide various functions to detect and isolate

[Contact Us](#)



## Relays vs. Circuit Breakers For Circuit Protection

Relays A relay is a switchable device that can be toggled electrically, so they are often used in switching and control applications. The central idea behind a relay when used for circuit

[Contact Us](#)



## Protective Relaying Principles and Applications

Protective Relaying Principles and Applications  
The article provides an overview of protective relaying principles and their applications for high-voltage power system

[Contact Us](#)

## What is a Protective Relay? , Keltour Controls Inc

Learn about the protective relay and the technologies behind it. Find out how they detect faults to maintain system integrity and more, here!

[Contact Us](#)



## Protective Relaying Essentials

Learn the fundamentals of protective relaying and its crucial role in maintaining electrical grid stability and preventing equipment damage.

[Contact Us](#)



## Power System Protective Relays: Principles & Practices

Abstract: Protective relays and devices have been developed over 100 years ago to provide "last line" of defense for the electrical systems. They are intended to quickly identify a fault and isolate it so the

[Contact Us](#)



### What is a Protective Relay? Principle, Advantages,

A protective relay is an electrical component that is designed to trip a circuit breaker when a fault is encountered or identified.

[Contact Us](#)



### What Is A Protective Relay And Why It Matters

A protective relay is a device that monitors electrical conditions and determines when a circuit must be disconnected to prevent equipment damage, safety hazards, or

[Contact Us](#)



### Protective Relay Basics

Traditionally, protective relays were electromechanical devices that utilized induction disk, coils, contacts, and solenoid elements to determine protective characteristics.

[Contact Us](#)



## What is Relay Protection and Why Is It Needed?

What is Relay Protection and Automation? Relay cabinets include microprocessors, control devices, and communication systems for monitoring network parameters, signaling abnormal

[Contact Us](#)



### Protective relay

Overview Operation principles Types according to construction Relays by functions Power source

In electrical engineering, a protective relay is a relay device designed to trip a circuit breaker when a fault is detected. The first protective relays were electromagnetic devices, relying on coils operating on moving parts to provide detection of abnormal operating conditions such as over-current, overvoltage, reverse power flow, over-frequency, and under-frequency.

[Contact Us](#)

## Contact Us

---

For datasheets, pricing, or custom fiber access solutions, please visit:  
<https://frindel.es>