

# **AdSS fiber optic cable junction box model**





## Overview

---

The Telexc TX Series ADSS/OPGW Metal Junction Box is a heavy-duty outdoor fiber optic splice enclosure designed for secure splicing and protection of ADSS (All-Dielectric Self-Supporting) and OPGW (Optical Ground Wire) cables. (1) optic fiber joint box is designed for splicing ADSS, OPGW cables and the normal cables, including two to four sleeves for input and output.



## AdSS fiber optic cable junction box model

---



### **Dome Type OPGW& ADSS Fiber Optic Joint Box Aerial**

Junction boxes support, organize, and protect the optical fibers. Junction boxes ensure that the optical fiber minimum-bending radius is not exceeded. The splice

[Contact Us](#)

### **High Quality ADSS Optical Fiber Joint Closure Box**

We are ADSS Splice Closure manufacture and supplier, provide High Quality ADSS Optical Fiber Joint Closure Box on sale, factory price.

[Contact Us](#)



### **ADSS Fiber Optic Cable Splice Closure**

OPGW metal junction boxes, also known as junction boxes, are designed to accommodate fiber optic splices to outdoor intermediate cables leading to control

[Contact Us](#)

### **SB01 Splice Enclosure and Accessories**

Furnished with four plugged cable ports (2 aluminum and 2 plastic) for either All-Dielectric Self-Supporting (ADSS) or Optical Ground Wire (OPGW) cables, the

[Contact Us](#)



### **Fiber Wall Outlet Box With 1 SC Duplex Adapter Port, 2**

The fttH wall outlet supports fiber termination, splicing, and cable management, accommodating a SC duplex or 1 LC quad adapter, with up to 4-core termination

[Contact Us](#)



### **How to Install ADSS Fiber Optic Cable: Structure,**

What is ADSS Fiber Optic Cable? Structure, Applications, and Installation Guide In my years working at ABPTEL, I have often seen how important it is to choose the

[Contact Us](#)



### **ADSS Fiber Optic Cable Splice Closure**

ADSS Joint Box OPGW metal junction boxes, also known as junction boxes, are designed to accommodate fiber optic splices to outdoor intermediate cables

[Contact Us](#)





### ADSS OPGW Metal Junction Box , Telexc TX Series

The Telexc TX Series ADSS/OPGW Metal Junction Box is a heavy-duty outdoor fiber optic splice enclosure designed for secure splicing and protection of ADSS (All-Dielectric Self-Supporting) and

[Contact Us](#)



### Fiber Optic Junction Boxes , Products & Suppliers , GlobalSpec

Find Fiber Optic Junction Boxes related suppliers, manufacturers, products and specifications on GlobalSpec - a trusted source of Fiber Optic Junction Boxes information.

[Contact Us](#)



### Dome ADSS/ Opgw Fiber Optic Joint Box Aerial Metal

Cable Joint Box is designed for splicing ADSS,OPGW cables and the normal cables, including two to four sleeves for input and output. Loose storage space makes

[Contact Us](#)



### Fiber Optic Cable Splice Closure / Opgw Cable Junction/Joint Box for

(1) optic fiber joint box is designed for splicing ADSS, OPGW cables and the normal cables, including two to four sleeves for input and output. (2) Ensure the transmission characteristics of optical fiber.

[Contact Us](#)



### Metal Joint Junction Box for Pole/Tower



**ADSS Opgw**

Metal Joint Junction Box For Pole/Tower ADSS OPGW Aerial Fiber Optic Cable Splice Closure opgw closure Description metal joint box for OPGW and ADSS

[Contact Us](#)



**Metal Joint Box for ADSS OPGW Cable**

Tower Pole use Aluminum Alloy Splice Closure for ADSS OPGW Cable The fiber dome closure OPGW has been developed for using with OPGWs (Optical

[Contact Us](#)



**Amazon : PNGKNYOCN 2 in 2 Out Horizontal**

About this item Optical cable joint box is suitable for the installation and use of overhead, pipeline, direct burial and other laying methods in communication,

[Contact Us](#)



**Download Junction Box STL files for 3D printers**

Discover 3D models for 3D printing related to Junction Box. Download your favorite STL files and make them with your 3D printer. Have a good time!

[Contact Us](#)





## Fiber Optic Junction Box for Reliable Network Connections

? Fiber Optic Junction Box - Small Box, Big Responsibility In every reliable fiber network, there's one critical component working behind the scenes -- the junction box. At PTCL, we design

[Contact Us](#)



## Premium Metal Junction Box for ADSS & OPGW , Heavy-Duty Fiber

The ADSS/OPGW Metal Junction Box is designed to protect and manage fiber optic cable splices in outdoor power and communication networks. It securely houses fiber core splices connecting trunk

[Contact Us](#)

## ADSS Opgw Metal Joint Junction Box for Pole and

(1) optic fiber joint box is designed for splicing ADSS, OPGW cables and the normal cables, including two to four sleeves for input and output. (2) Ensure the

[Contact Us](#)



## ADSS/OPGW Metal Junction Box

FOSC Metal Joint Junction Box For Pole and Tower ADSS/OPGW 12, 24, 48, up to 144 Cores Aerial Fiber Optic Cable Splice Closure, Contact Us for Details Now!

[Contact Us](#)



### ADSS Optical Fiber Joint Closure Box

We are Fiber Splice Box manufacture and supplier, provide ADSS Optical Fiber Joint Closure Box on sale, factory price.

[Contact Us](#)



### OPGW Optical Cable Metal Joint Box/Splice

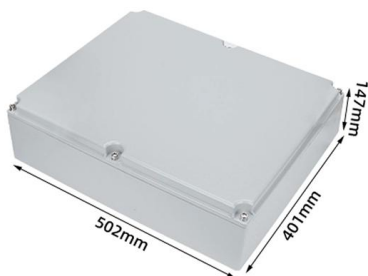
Fibre optic metal joint box/joint closure/splice closure is used for the continuation of the optical cable in the middle of the tower, which has the advantages of high

[Contact Us](#)

### ADSS Opgw Metal Joint Junction Box for Pole and

Aluminium Alloy ADSS OPGW Fiber Optical Splice Closure The metal joint box are applicable for connection protection of special optical cables, with the functions of

[Contact Us](#)



### Metal Joint Box for ADSS OPGW Cable

The metal optical cable splice closure is made of aluminum alloy with perfect seal.

[Contact Us](#)



## The FOA Reference For Fiber Optics

The fibers are double buffered and can be directly terminated, but because their fibers are not individually reinforced, these cables need to be broken out with a

[Contact Us](#)



## ADSS/Opgw Fiber Optic Cable Mounting Tower 12-144 Core

This Cable Joint Box is engineered for splicing ADSS, OPGW, and conventional optical cables. It features two to four cable entry/exit ports and offers ample loose storage space, facilitating

[Contact Us](#)

## Fiber Optic Cable Splice Closure / Opgw Cable Junction/Joint Box for

Optical fiber network Large scope of application, simple structure Suitable for opgw optical cable and adss optical cable max diameter 22mm max number of optical fiber cores 44 cores. Good sealing,

[Contact Us](#)



## 4 Core Fiber Optic Termination Box FTB

High quality 4 Core Fiber Optic Termination Box FTB from China, China's leading product market Fiber Optic Termination Box product market, With strict quality

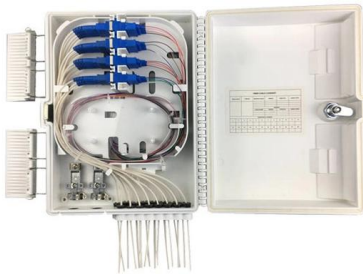
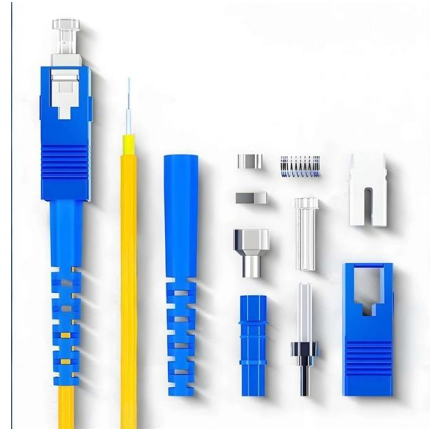
[Contact Us](#)



### **ADSS OPGW Optical Cable Metal Joint Box**

Metal Joint Box is designed for splicing ADSS, OPGW cables and the normal cables, including two to four sleeves for input and output. Loose storage space makes storage more conveniently, quickly

[Contact Us](#)



### **Metal Joint Junction Box, Splicing Box Manufacturer**

ADSS/OPGW Metal Junction Boxes come in various models for both tower and pole applications. They're available with different port configurations and fiber

[Contact Us](#)

## **Contact Us**

---

For datasheets, pricing, or custom fiber access solutions, please visit:  
<https://frindel.es>