



**FRINDEL OPTICS**

# **Acceptance Standards for Household Electrical Distribution Boxes**





## Overview

---

The current standard for consumer units in domestic premises is set by BS 7671:2018+A3:2024 — the 18th Edition of the IET Wiring Regulations with Amendment 3, issued in July 2024. 3 to BS 7671:2008 (IET Wiring Regulations Seventeenth Edition), which was published in January and comes into effect on 1 July, will include a new regulation requiring consumer units and similar switchgear assemblies in domestic premises to have a non-combustible enclosure. The IEC (International Electrotechnical Commission) and BS 7671 (British Standard for Electrical Installations) both provide essential requirements for electrical installations, including those for fuse boards like garage unit, consumer unit and distribution board. Failing to comply doesn't just put properties at risk—it could also result in legal consequences. Understanding these regulations is essential, whether you're upgrading an old fuse. In this guide, we'll break down everything you need to know to install a distribution box correctly and confidently. Choose the right box based on environment (indoor/outdoor), load capacity, and durability.



## Acceptance Standards for Household Electrical Distribution Boxes

---



### IEC 60670-1:2024

This part of IEC 60670 applies to boxes, enclosures and parts of enclosures (hereafter called "boxes" and "enclosures") for electrical accessories with a rated voltage not exceeding 1 000 V AC and 1 500

[Contact Us](#)

### What Are the Latest Regs for Consumer Units?

Are your consumer units compliant? Find out the latest UK regulations, including AFDDs, RCDs, and installation requirements.

[Contact Us](#)



### IEC / BS 7671 Codes for Consumer Unit and Distribution

The IEC (International Electrotechnical Commission) and BS 7671 (British Standard for Electrical Installations) both provide essential requirements for electrical

[Contact Us](#)

### Guardians of Safety: A Comprehensive Guide to

Stringent electrical codes and regulations govern the design and installation of electrical boxes. This commitment to compliance ensures that power distribution



### **International-electrical-standards-regulations**

BS 7671, "Requirements for Electrical Installations" is published by the Institution of Engineering and Technology and BSI, it governs all domestic electrical installations (and many other types).

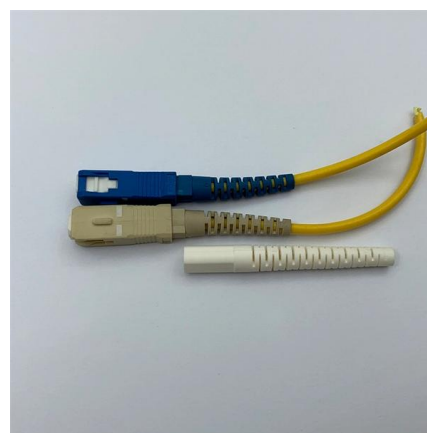
[Contact Us](#)



### **Acceptance Testing Specifications for Electrical Power Distribution**

It is recognized by the Association that the needs for acceptance testing of commercial, industrial, governmental, and other electrical power systems vary widely.

[Contact Us](#)



### **BS EN 60670-23:2008+A11:2023 Boxes and enclosures**

It provides clear and concise guidelines for the installation of electrical boxes and enclosures, ensuring that all installations are safe, efficient,

[Contact Us](#)

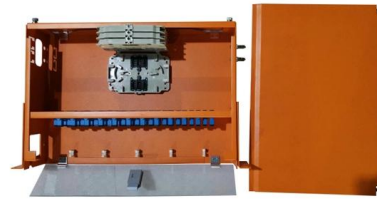




## Boxes and enclosures for electrical accessories for household and

Foreword The text of the International Standard IEC 60670-1:2002, prepared by SC 23B, Plugs, socket-outlets and switches, of IEC TC 23, Electrical accessories, together with the common modifications

[Contact Us](#)



## A comprehensive understanding of distribution box

? Introduction Distribution boxes are at the heart of safe and organized electrical systems--whether in residential, commercial, or industrial settings. But

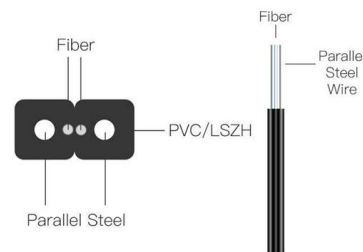
[Contact Us](#)



## Requirements And Specifications For Installation Of

In flammable and explosive environments, explosion-proof distribution boxes should be selected and explosion-proof treatment should be carried out.

[Contact Us](#)



## PRODUCT MANUAL FOR BOXES AND ENCLOSURES FOR ELECTRICAL

Grouping guidelines Following aspects of the product shall be taken into consideration for grouping of different varieties of 'Boxes and Enclosures for Accessories for household and similar fixed electrical

[Contact Us](#)





## The installation requirements for the distribution box

Learn how to install a distribution box safely and correctly. Covers wiring, placement, standards, and expert tips for a compliant setup.

[Contact Us](#)



## Electrical panels 101: a beginner's guide to your home's

Learn what your electrical panel does, how circuits and amps work, and how to plan upgrades--plus expert advice on smart panels and panel capacity.

[Contact Us](#)

## Electrical Distribution Solutions for Prefab Houses

Explore the latest trends in prefab construction, compare regional electrical standards and distribution box requirements, and learn practical tips for

[Contact Us](#)



## Outdoor Electrical Distribution Box Specifications: NEC

Complete specification guide for outdoor electrical distribution boxes covering NEC Article 312 requirements, NEMA ratings, sizing calculations, and

[Contact Us](#)



## New non-combustible enclosure requirement for consumer units

A particular type of distribution board comprising a type-tested co-ordinated assembly for the control and distribution of electrical energy, principally in domestic premises, incorporating manual means of

[Contact Us](#)



## IEC 60670-1:2024

IEC 60670-1:2024 IEC 60670-1:2024 applies to boxes, enclosures and parts of enclosures (hereafter called "boxes" and "enclosures") for electrical

[Contact Us](#)

## How to Choose a House Distribution Box

Choosing the house distribution box that best fits your home is important for your safety and the efficiency of your electrical system. It facilitates the flow of electricity, guards appliances, and

[Contact Us](#)



### Waterproof and dustproof, reliable and safe

The outer classic sink design allows the sealing ring of the cabinet and door to be seamlessly compressed without leaving a trace of gaps



## Standard Electrical Enclosure Sizes: Chart, Dimensions

Electrical enclosure sizes are not universal, but most manufacturers follow common size families. This guide explains typical wall-mount and floor

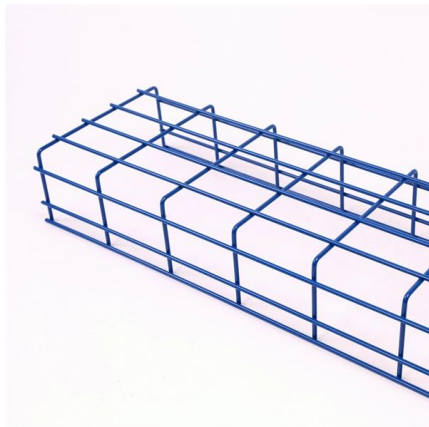
[Contact Us](#)



## Electrical Control Panels & Distribution Boxes: Sizes,

Introduction Electrical control panels and distribution boxes are the backbone of modern electrical systems. From powering homes and industrial

[Contact Us](#)



## Electrical Box Types & Sizes for Receptacles when

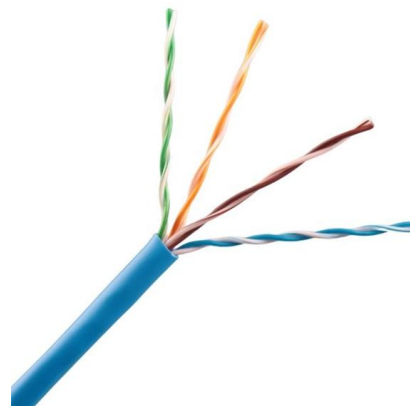
types of electrical receptacles (wall outlets or wall plugs): how to choose the right type of electrical receptacle when adding or replacing a wall outlet in a building. Here we describe matching 15-Amp

[Contact Us](#)

## BS EN 60670-22:2006+A11:2024 , 30 Sep 2024 , BSI Knowledge

Boxes and enclosures for electrical accessories for household and similar fixed electrical installations - Particular requirements for connecting boxes and enclosures

[Contact Us](#)



## Conformity to specifications and standards

The development, testing and production per national regulations, European Standards and special approvals document the high safety standard of els brand

[Contact Us](#)





## Consumer Unit Regulations 2024 , Amendment 3 Guide , Elec-Mate

Consumer Unit Regulations Amendment 3 Guide (2024) The definitive guide to consumer unit regulations under BS 7671:2018+A3:2024. Metal enclosures, RCD protection, RCBO design, SPD

[Contact Us](#)



## Contact Us

---

For datasheets, pricing, or custom fiber access solutions, please visit:  
<https://frindel.es>