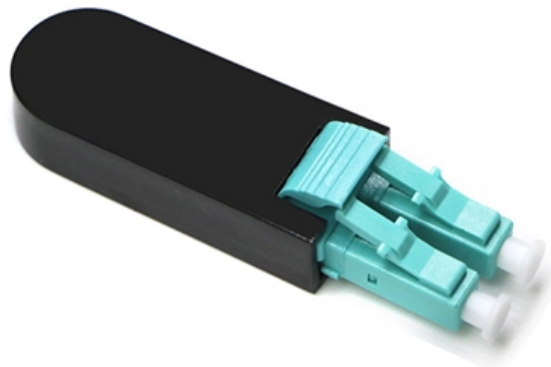


9697 Temperature Sensing Cable Terminal Box





Overview

The IP66 rated enclosure provides a quick and efficient method to interconnect, terminate and join lengths of any Signaline heat sensing cable. meet the national standard GB16280-2014 "Linear Fire Heat-sensing Detectors", and have passed the inspection of the National Fire Electronic.

New: A brand-new, unused, unopened, undamaged item in its original packaging (where packaging is. Packaging should be the same as what is found in a retail store, unless the item was. System Sensor 800 series digital linear heat detector and 900 series analogue linear heat detector offer early detection of fire and overheating conditions in industrial high risk hazards as well as many types of commercial applications. We are dedicated to promote and sale all kinds of world-classname brand IC at home and abroad,such as TI,AD,MOT,MAX,INTEL,PHI,NS,ALTERA and so on.



9697 Temperature Sensing Cable Terminal Box



Vimpex Signaline SL-UCB Universal Connection Box

It uses heat rated terminals and glands can be used with any Signaline linear heat detector. The IP66 rated enclosure provides a quick and efficient method to

[Contact Us](#)

Honeywell JTW-LD-9697A/105/M Cable Type Linear Heat Fire Detector

The detector consists of a temperature-sensing cable, a signal processing unit, a terminal box, and an intermediate junction box (optional), which can be conveniently matched with fire alarm controllers



[Contact Us](#)



Accessories, sensors, Terminal box , Spare parts and accessories for

084Z4423 Terminal box, Parts included: Terminal box, Pg 11/Pg 13.5, Used for product: MBT 5253; MBT 153, Packing format: Multi pack, Quantity per packing format: 8

[Contact Us](#)

[NTC/PTC/Polymer PTC Thermistor, Varistor (MOV & MLV)]

[NTC/PTC/Polymer PTC Thermistor, Varistor (MOV & MLV)] Thinking

[Contact Us](#)



Temperature Element Wiring Installation Procedure of

More Explanation About Selection of Temperature Elements, Methods of Conduit Installation, Electrical Terminal Box, Choosing Cable/wire for Coldbox

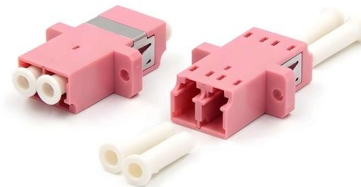
[Contact Us](#)



Wiley Online Library , Scientific research articles, journals, books

Hier sollte eine Beschreibung angezeigt werden, diese Seite lässt dies jedoch nicht zu.

[Contact Us](#)



Terminal boxes , Junction boxes , Ex , Ex e , Ex d , ATEX

We offer bespoke, custom-made terminal boxes and terminal box combinations, as well as standard products with short delivery times. Our products are certified for installation technologies all over the

[Contact Us](#)





Fiber Optic Temperature Sensing and Measurement , Luna

Fiber optic temperature sensors are immune to the many environmental effects that compromise other measurement technologies, can be embedded and installed in

[Contact Us](#)



Example configuration for temperature measurement

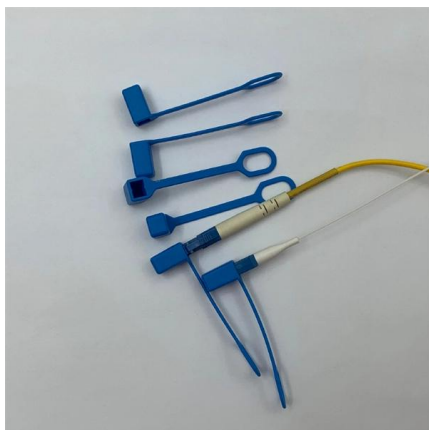
The example configuration for the temperature measurement consists of an EK1100 EtherCAT coupler with connected terminals that match the typical distribution of

[Contact Us](#)

Sensepoint

Sensepoint flammable and toxic gas detectors are designed for use in potentially explosive atmospheres and allow for hands free, unhindered access, to terminals via the hinged lid of the junction box.

[Contact Us](#)



Vimpex Signaline SL-UCB Universal Connection Box

The IP66 rated enclosure provides a quick and efficient method to interconnect, terminate and join lengths of any Signaline heat sensing cable. It can also be

[Contact Us](#)



Terminal block temperature sensor, Terminal block

Temperature: -40 °C - 1,700 °C Process pressure:
400 bar electrical interface, with cable, a
connector or a terminal block then attached to
these connector wires.

[Contact Us](#)



Signaline Fixed Temperature Heat Sensing Cable

Signaline Fixed Temperature Heat Sensing Cable
Signaline Fixed Temperature Heat Sensing Cable
(Signaline FT) detects a build up of heat
anywhere along its length. When any point along
the length

[Contact Us](#)

Sensor Cable and Connectors

Introduction Cables play a major role in electrical
systems. A properly engineered sensor cable and
connector system helps attach the sensors and

[Contact Us](#)



TE Connectivity DuraSeal Service and Repair Heat Shrink Terminals

TE Connectivity Duraseal Terminal and Splice
Service and Repair Kit 2 This handy Duraseal
terminal and splice service and repair kit
contains a range of insulated Duraseal terminals,
with a wire size

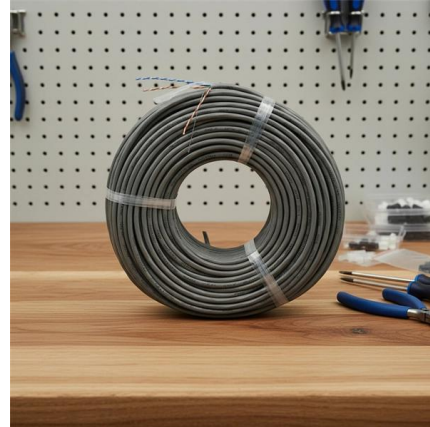
[Contact Us](#)



NTC Ring Temperature Sensor Cable Assemblies

Molex NTC Ring Temperature Sensor Cable Assemblies deliver accurate surface-temperature readings in difficult-to-reach locations. These

[Contact Us](#)



New JTW-LD-9697A Cable-type linear temperature sensing fire

Packaging should be the same as what is found in a retail store, unless the item was packaged by the manufacturer in non-retail packaging, such as an unprinted box or plastic bag.

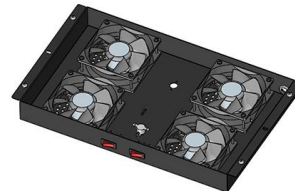
[Contact Us](#)



Cable termination junction box CB series

Certifications Wilcoxon's cable termination junction boxes are a low cost monitoring solution for 1-4 channel applications. The CB series are NEMA 4X rated for use in harsh environments and come

[Contact Us](#)



High temperature Thermocouple & RTD cables

Production of cables for temperature sensors: durable and high performance, designed for high precision industrial applications.

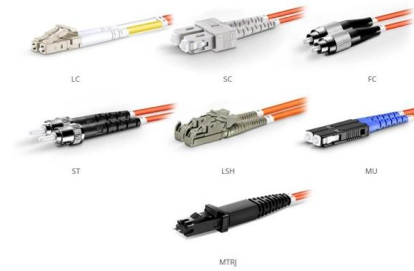
[Contact Us](#)



1PCS NEW FIT JTW-LD-9697A/M Temperature sensing cable

Packaging should be the same as what is found in a retail store, unless the item was packaged by the manufacturer in non-retail packaging, such as an unprinted box or plastic bag.

[Contact Us](#)



OM1 Fiber Patch Cable Family

Temperature sensor terminal block

Find your temperature sensor terminal block easily amongst the 33 products from the leading brands (PUSHNA, Temperature Technology, Taisuo Technology,) on

[Contact Us](#)



Shengsis JTW-LD-9697A M the temperature cable microcomputer

Shengsis JTW-LD-9697A M the temperature cable microcomputer 9697A EOL terminal box on sale, buy cheap Shengsis JTW-LD-9697A M the temperature cable microcomputer 9697A EOL terminal box

[Contact Us](#)



Temperature Sensor Cable Assemblies

All Adam Tech temperature sensor cable assemblies consist of a cable or wires with a sensor and connector mounted on either end. Available

[Contact Us](#)





800 900 Series Linear Heat Detector (LHD)

The cable contains insulators which melt at a specific temperature. At the rated temperature, the heat sensitive polymeric insulation creates pressure between conductors, permitting them make contact

[Contact Us](#)



Contact Us

For datasheets, pricing, or custom fiber access solutions, please visit:
<https://frindel.es>