

# 8-channel optical switch





## 8-channel optical switch

---



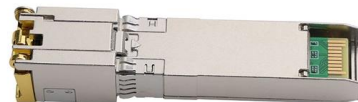
### **UOTEK Digital 8-channel optical isolated dry contact I/O**

The UT-5528 opto-isolated data parallel input I/O controller is an 8-bit, 8-channel isolated switching input. All switching inputs are simply COM and IN1 shorted, or

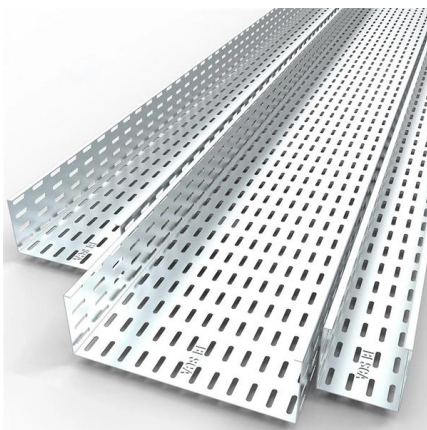
[Contact Us](#)

### **MEMS 8x8 Fiber Optical Switch**

8x8 Series Fiber Optic switch redirects incoming optical signals into 4 output fibers with blocking. This is achieved using a patented MEMS and activated via an electrical control signal. It uniquely features



[Contact Us](#)



### **1X8 Optical Switch**

1X8 Fiber Optical Switches Modules is a kind of functional component, with the ability of switching optical route. The 1X8 Opto-Mechanical Optical Switches consists of 1 input and 8 output fiber ports

[Contact Us](#)

### **Ultra-Broadband/Low-Loss 1x8 MEMS Fiber Optical**

The FF Series fiber optic switch connects optical channels by a micro-mechanical fiber to a fiber auto-alignment platform and is activated via an electrical



### 1x8 Fiber Optical Switches

Mini 1x8 Mechanical Optical Switch GEZHI Series  
Mini 1x8 fiber optic switch connects optical channels by redirecting an incoming optical signal into a

[Contact Us](#)



### MEMS MULTI-MODE 1X8 OPTICAL SWITCH

DiCon's Multi-Mode MEMS 1x8 Optical Switch provides channel selection between a single input fiber and 8 output fibers. At the core of the switch is DiCon's proprietary MEMS chip; an electrostatically

[Contact Us](#)



### Application fields of 8-channel wavelength 532nm

8-channel wavelength 532nm mechanical optical switch is a device for high-precision optical signal switching, which is widely used in optical communication, laser

[Contact Us](#)





### **A 8-channel SPDT optical fiber switch box**

This switch box provides 8x SPDT optical fiber switches that can open/close in a few ms. This can be used for fiber multiplexing to a wavemeter (e.g., High-Finesse WS8 with 1x8 switch).

[Contact Us](#)



### **MEMS 1X8 Optical Switch**

MEMS 1X8 Fiber Optical Switch is a compact, single mode or multimode fiber optical switch configurable for port counts up to 1x64 utilizes the proprietary microelectromechanical system (MEMS)

[Contact Us](#)

### **PXI Single 8 Channel Optic Mux FC/APC**

The 40-852-018 8-channel multiplexer is part of Pickering's range of PXI Fiber Optic MEMS Switching modules. They are available in many high density formats with a choice of different connector styles

[Contact Us](#)



### **An 8-Channel Optical Selective Switch for Polarization and**

We present an 8-channel chip-based selective switch designed for polarization and wavelength-multiplexed fiber communication systems. The compact photonic chip,

[Contact Us](#)



## CableRack 8 Port SFP Unmanaged Ethernet Optical

CableRack 8 Port SFP Unmanaged Ethernet Optical Switch with One 1000M Gigabit UTP Port Convert RJ45 Ethernet to Gigabit Fiber with Zero Setup Use as a stand

[Contact Us](#)



## CL Optical Switch 8x8

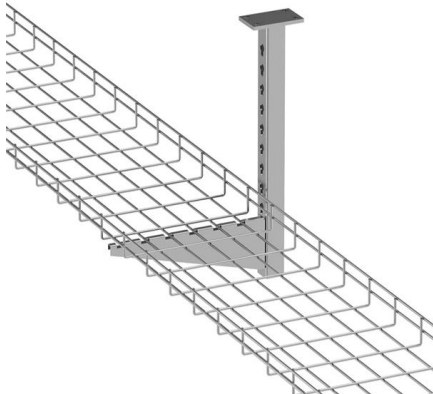
The CL Series 8x8 fiber optical switch connects optical channels by redirecting an incoming optical signal into a selected output fiber. This is achieved using

[Contact Us](#)

## Two-dimensional 8 x 8 optical switch structure.

In this work we describe the fabrication and characterization of MOEMS-based integrated optical switches with improved ON/OFF performance.

[Contact Us](#)



## 8+1 Optical Switch

8+1 Fiber Optical Switch connects optical channels by redirecting an incoming optical signal into a selected output fiber. The 8:1 Opto-Mechanical Optical Switches consists of 9 fiber ports that

[Contact Us](#)



### 1X8 MEMS optical switch module

1X8 MEMS optical switch module Description XH-MOSW-1x8 MEMS optical switch (Hereinafter referred to as MEMS optical switch), a multi-channel optical path switch modularization. MEMS

[Contact Us](#)



### PXI 8-Channel Optical MUX, Single-Mode 9/125 Fiber,

The 40-852-418 is an 8-Channel Fiber Optic Multiplexer and is part of Pickering's range of MEMS fiber switching solutions.

[Contact Us](#)

### Optical Switch Multichannel Single Mode Multi Mode

Overview The OPTELLENT OPS-Series Optical Switch is a cost-effective easy-to-use all-optical switch solution for demanding applications in fiber optic instrumentation and communication. The rack

[Contact Us](#)



### 8 Channel Analog Switch ICs - Mouser

8 Channel Analog Switch ICs are available at Mouser Electronics. Mouser offers inventory, pricing, & datasheets for 8 Channel Analog Switch ICs.

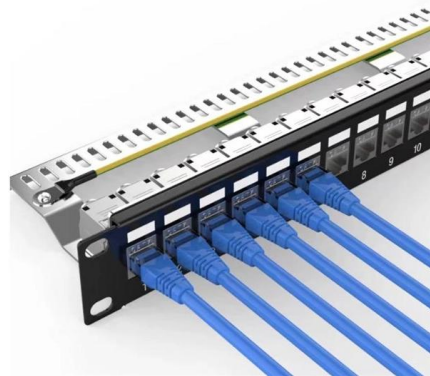
[Contact Us](#)



## **MEMS 1x8 Fiber Optical Switch/VOA**

SKU: MESM, MEMP The MEMS 1x8 Series Fiber Optic Switch connects optical channels by redirecting incoming optical signals into selected output fibers. This is achieved using our patented configuration

[Contact Us](#)



## **Datasheet**

Instrumentation The CrystaLatch 1x8 Series fiber optical switch connects optical channels by redirecting an incoming optical signal into a selected output fiber. This is achieved using patented non

[Contact Us](#)

## **OFSW**

OFSW-8x1 is a 8x1 prism optical switch. It can support 8 optical fibers input and 1 fiber output, channel switch. Wide operating wavelength range, low insertion loss and speedy switching rate, can use

[Contact Us](#)



## **8 Port Fiber Switch 10/100/1000M RJ45 and 2-port**

This switch provides 8-port 10/100/1000M RJ45 and 2-port 1000M SFP fiber ports. Users may need to use different SFP modules, such as 1000Base-T, 1000Base

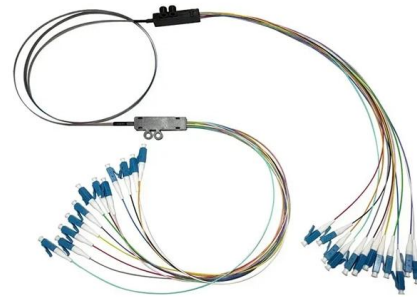
[Contact Us](#)

## **8-Channel Ethernet Switch & Copper-to-**



Eight channel Ethernet Switch built around the Marvell Link Street 88E6390X device with support for four IEEE connections for copper Base-T and fiber optics which is

[Contact Us](#)



**DATA ADJUSTABLE, EASY TO USE**



SET INCREASE DECREASE POWER SWITCH

**CrystaLatch(TM) 1x7, 1x8 Fiber Optical Switch**

Latching operation preserves our selected optical path after the drive signal has been removed. The all solid state CL 1x8 fiber optic switch features low insertion loss,

[Contact Us](#)

**CableRack 8 Port SFP Unmanaged Ethernet Optical Switch with**

CableRack 8 Port SFP Unmanaged Ethernet Optical Switch with One Multimode SFP Convert RJ45 Ethernet to Gigabit Fiber with Zero Setup Use as a stand-alone media converter to

[Contact Us](#)



**Optical Switches , Keysight**

Designed for durability and precision, our optical switches support single-mode and multimode fiber types with low insertion loss, high return loss, and reliable repeatability. With support for various

[Contact Us](#)



## Contact Us

---

For datasheets, pricing, or custom fiber access solutions, please visit:  
<https://frindel.es>