

4U switch 2U tariff cost





Overview

Premium interconnect market; 2U baseline is \$120-\$220, so 4U-8U sits just below quarter-rack rates. 5G Multi-Service Layer 2 Switch supported in a modular chassis design with 7 open slots in the 4U chassis, offering 2x SFP ports capable of speeds up to 2. For the sample orders, if it met with the Free Shipping policy, then shipping and delivery cost would be covered by NADDOD. The NC8200-4TD can operate as leaf and spine switch for medium-sized data centres and. The table below gives a fast look at these chassis sizes: Tip: The "U" in server chassis means "rack unit. Ideal for single or dual-socket and multi-node configurations, perfect for HPC, AI, Storage, and Data.



4U switch 2U tariff cost



4u colocation cost : r/sysadmin

You will spend more to host 4U than a newer 1U server. Space and power are the two most expensive things to a retail colocation provider as they generally are related in the bill

[Contact Us](#)

MSI Server Barebones: 1U, 2U, 3U, 4U Racks & Multi

Discover MSI's server barebones featuring Intel, AMD, and Ampere tech. Ideal for single or dual-socket and multi-node configurations, perfect for HPC, AI, Storage,



[Contact Us](#)



Choose the Perfect Rackmount Server Case: 1U to 4U

Choosing the perfect rack mount server case, especially understanding the differences between 1U, 2U, 3U, and 4U sizes, is a crucial

[Contact Us](#)

1U/2U/4U (Rack Unit) - Definition & Detailed Explanation

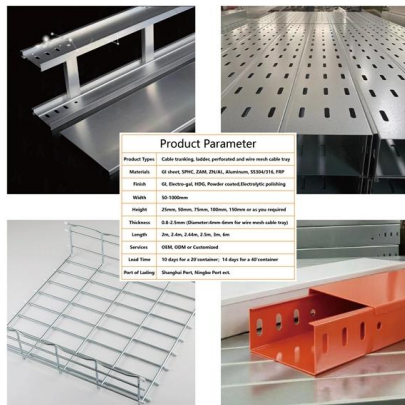
I. What is a 1U/2U/4U (Rack Unit)? 1U, 2U, and 4U are terms used to describe the height of a piece of equipment designed to be mounted in a standard 19-inch server rack. These



Everything You Need to Know About Rack Units: From

Do not forget that rack servers and all other types of equipment are given in multiples of rack units. For instance, two 2U servers would require 4U, a

[Contact Us](#)



128-Port 400G QSFP112 51.2T Ethernet 4U ONIE

For the sample orders, if it met with the Free Shipping policy, then shipping and

[Contact Us](#)



MTP MPO SC-Type Fiber Adapter



Understanding Colocation Data Center Pricing in 2025

Colocation pricing in 2024 is shaped by a myriad of factors, each contributing uniquely to the overall cost. Fundamentals like space and power

[Contact Us](#)



2U vs 4U Rack Server Equipment

Forget just filling slots. Choosing between 2U and 4U rack servers is like selecting teammates for a high-stakes project. It's about matching personality (workload demands) with capability (hardware)

[Contact Us](#)



1U vs 2U vs 4U Servers: What "U" Means & How to

Learn what a rack unit (U) is, how 1U/2U/4U differ, and how to pick the right chassis height for disks, PCIe/GPU, noise, power, rails, and airflow. ?

[Contact Us](#)

FS 4-Slot 2U Modular Chassis Switch for Data centre

It is a 2U switch with 4 slots, which supports three types of cards: NC8200-8C, NC8200-16Q, NC8200-24BC. NC8200-4TD can offer a maximum of 128x 10G/25G, 64x 40G or 32x 100G full line rate ports.

[Contact Us](#)



Bundesnetzagentur

According to section 40, clause 3, number 1 of the German Telecommunications Act, the Regulatory Authority (Bundesnetzagentur, BNetzA) may, besides the cost information submitted to it,

[Contact Us](#)



How to choose a 2U rack server

What is the difference between server rack 2U and 4U? The short answer here is density; 2U models are smaller, but designed in a way that allows

[Contact Us](#)



Tripp Lite 4U WALL MOUNT RACK ENCLOSURE

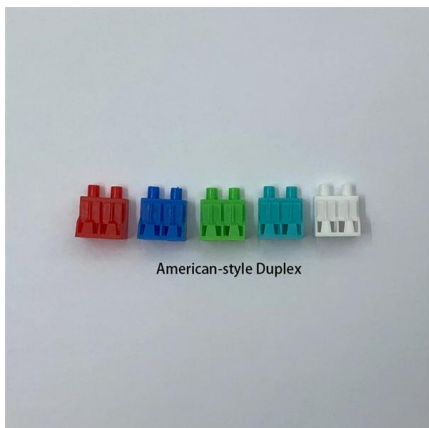
Tripp Lite by Eaton SmartRack 4U Low-Profile Vertical-Mount Switch-Depth Wall-Mount Rack Enclosure Cabinet - For Patch Panel, LAN Switch - 4U Rack Height

[Contact Us](#)

Comparison of 1U, 2U, 3U, 4U, and 5U server chassis

Compare 1U, 2U, 3U, 4U, and 5U server chassis by size, capacity, cooling, and expansion to choose the best fit for your IT infrastructure and future

[Contact Us](#)



Choosing Between 2U vs 4U Servers: What to Consider

Deciding on 2u vs 4u servers? Understand the trade-offs of size, performance, and expandability to optimize your network infrastructure.

[Contact Us](#)



MSI Server Barebones: 1U, 2U, 3U, 4U Racks & Multi-Node

Four total M.2 ports. Two are pre-configured with boot drives out of the box, two are open and available for expansion. Discover MSI's server barebones featuring Intel, AMD, and Ampere tech. Ideal for

[Contact Us](#)

Focus creates quality products



128-Port 400G QSFP112 51.2T Ethernet 4U Switch for

For the sample orders, if it met with the Free Shipping policy, then shipping and delivery cost would be covered by NADDOD. But if it is not, then the shipping and

[Contact Us](#)

128-Port 400G QSFP112 51.2T Ethernet 4U Switch with

For the sample orders, if it met with the Free Shipping policy, then shipping and delivery cost would be covered by NADDOD. But if it is not, then the shipping and

[Contact Us](#)



64-port 400G QSFP-DD 25.6T Ethernet 2U Switch for AI

For the sample orders, if it met with the Free Shipping policy, then shipping and delivery cost would be covered by NADDOD. But if it is not, then the shipping and

[Contact Us](#)





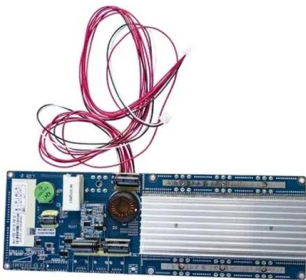
128-Port 400G QSFP112 51.2T Ethernet 4U Switch for

N9500-128QC is a low-latency 400G RoCE 4U switch with 128x400G QSFP112 ports, SONiC OS, and Broadcom Tomahawk 5 (BCM78900), offering 51.2Tbps

[Contact Us](#)

Fast shipment in stock Default white and black, contact customer service for notes

4U standard model



Choosing the Right Server Case: 1U, 2U, 3U, and 4U for

Identify the most suitable case for your server by comprehending the distinction between 1U, 2U, 3U, and 4U server cases in terms of your server's

[Contact Us](#)

Colocation Pricing in 2026: Rack, Cabinet & Data Center

Navigate the complexities of colocation pricing with our comprehensive guide. Uncover factors of colocation costs to get the best deal.

[Contact Us](#)



4U-8U Colocation Prices (2026): Mid-Size Server Space In US

4U-8U colocation typically costs more than simply doubling a 2U price, but less than jumping straight to a 12U quarter rack. It's the "sweet spot" when you've outgrown 1U/2U but want to keep TCO below

[Contact Us](#)

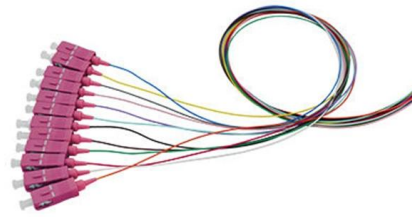
Network Cabinet, Data Cabinet & Server



Racks Price List

Network Cabinets Network Racks or Network cabinets are often confused as server cabinet. Nevertheless, there is a great difference. Network cabinets are generally

[Contact Us](#)



Secure 1U, 2U, 4U Colocation Services in UAE , Low

1U, 2U, or 4U server colocation in UAE with 99.9% uptime, latest firewalls, DDoS protection, high-speed connectivity, & 24/7 support. Get your rack space now at

[Contact Us](#)

Contact Us

For datasheets, pricing, or custom fiber access solutions, please visit:
<https://frindel.es>