

400 cable trays connected to 800





400 cable trays connected to 800



FireWire® Cables Selection Guide: Types, Features,

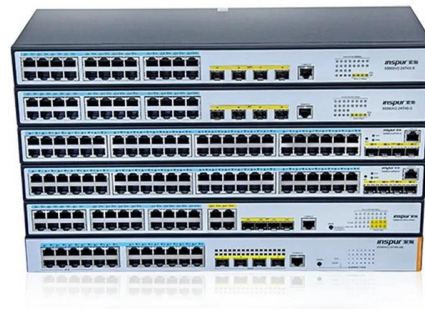
FireWire 800 (IEEE 1394b) cables double the transmission speed of the original interface and increase the maximum distance of connections. Unlike FireWire®

[Contact Us](#)

TRAY CABLE

APPLICATIONS Primarily used for connecting power devices in commercial and industrial environments. Suitable for installation in channels, ducts, wireways, cable trays, and raceways.

[Contact Us](#)



Max Cable Numbers Fill Table

Choose right wire mesh cable tray size according to cable numbers. You can get quick reference here.

[Contact Us](#)

FeederCalc , Free NEC Feeder & Conduit Size Calculator

A free, fast, and easy-to-use tool for calculating electrical feeder and conduit sizes based on NEC standards.

[Contact Us](#)



CABLE TRAY

SFSP wire Basket Trays have a fast connection profile for installations requiring long runs of straight Cable Trays lengths. Applications : Network cabling, wiring closets, fiber-to-desktop applications and

[Contact Us](#)

Cable Tray Sizing Calculator , IEC 61537 & NEC 392 Guide

Use this cable tray sizing calculator to check fill %, select tray size, and comply with IEC 61537 & NEC 392 with formulas, example and checklist.

[Contact Us](#)



Cable Tray Capacity Calculator

Calculate cable tray capacity, fill ratio, width, height, or cable diameter from four known values using inches, feet, cm, or meters.

[Contact Us](#)

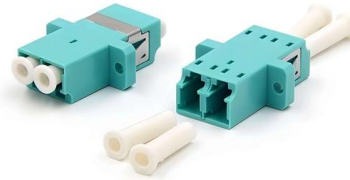


Cable Tray Capacity Calculator



This calculator determines the maximum number of cables that can be safely housed within a cable tray based on its dimensions and the cross-sectional

[Contact Us](#)



Installation Of Cable In Cable Trays: NEC, Safety

Installation of Cable in Cable Trays ensures proper routing, cable management, NEC compliance, grounding, fire safety, and load capacity.

[Contact Us](#)

B-Line series Cable Tray Design Considerations

As an industry leader in cable tray, Eaton offers one of the widest ranges of cable management solutions available in the market today with its B-Line series portfolio. With unmatched quality and service, we



[Contact Us](#)



GUIDE CABLE TRAYS TECHNICAL

NEMA VE 1-2017 Specifies requirements for metal cable trays and associated fittings designed for use in accordance with the rules of Canadian Electrical Code, Part I and the National Electrical Code®

[Contact Us](#)



Practices for grounding and bonding of cable trays

Grounding and bonding of cable trays There are three wiring options for providing an EGC in a cable tray wiring system: An EGC conductor in or on

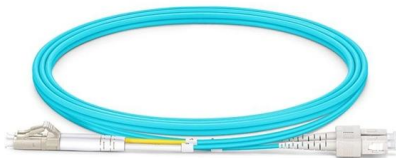
[Contact Us](#)



Tray and Ladder Sizing by Cable Capacity Calculator - IEC

Calculate tray and ladder sizes by cable capacity with our IEC-compliant calculator for efficient and accurate electrical installations.

[Contact Us](#)



Cable tray 400mm

Shop high-quality cable tray 400mm from reliable suppliers. Durable, galvanized, and perfect for indoor and outdoor electrical systems. Bulk orders available.

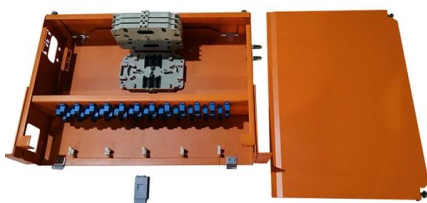
[Contact Us](#)



How Many Cables Can a Cable Tray Hold? A

How Many Cables Can a Cable Tray Hold? A Comprehensive Guide During the design of a cable management system, one of the most important

[Contact Us](#)





Explaining NEC Article 392 on Cable Trays

NEC Article 392 explains cable trays, their components, appropriate wiring methods for cable trays, and instances where they are and are not

[Contact Us](#)



CABLE TRAYS CONNECTION INSTRUCTIONS

Introduction The purpose of this document is to describe the correct process to install the connectors in our cable trays.

[Contact Us](#)

Practices for grounding and bonding of cable trays

All metallic cable trays shall be grounded as required in Article 250.96 regardless of whether or not the cable tray is being used as an equipment grounding conductor (EGC).

[Contact Us](#)



Cable tray restrictions where power and data share a common tray

But Tray Cable is a chapter 3 wiring method, and 800.133 talks about comm cables in the same tray as "conductors". I'm not sure if "conductors" was intended to include conductors in another

[Contact Us](#)



Cable Tray Technical Guide A practical guide to product selection and

A practical guide to product selection and installation This guide for engineers and installers has been developed by ABB as a practical reference regarding cable tray characteristics, installation, and

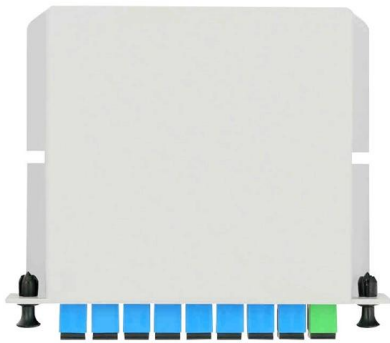
[Contact Us](#)



Cable Trays Connection Instructions

It is possible to use cable trays as grounding conductor equipment. In accordance with National Electrical Code (NEC) Article 392 "Cable trays" first determine the Maximum Fuse Ampere Rating or

[Contact Us](#)



Cablofil CP400GS Pre-Galvanised Steel Wire Cable Tray Cover

Pre-galvanised steel wire cable tray cover designed to protect cables in industrial environments. Compatible with wire mesh trays and cover clamps, offering corrosion resistance and halogen free

[Contact Us](#)



Cable Tray Technical Guide A practical guide to product selection and

Cable tray installed in a hazardous location must contain only those cables that are appropriate for this type of environment as defined in Chapter 5 of the NEC.

[Contact Us](#)

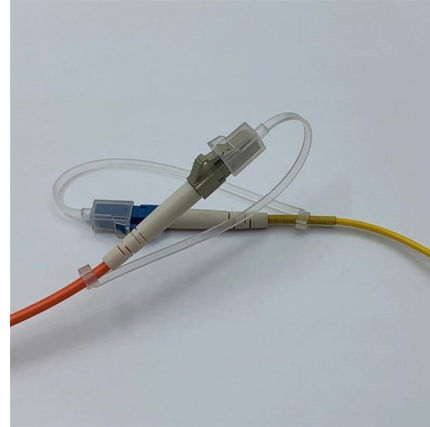




Cable Tray Width Selection for Installations with 600 Volt Single

Cable Tray Width Selection for Installations with 600 Volt Single Conductor Cables National Electrical Code (NEC) Section 318-11 Ampacities of Cables, Rated 2000 Volts or Less, in Cable Trays. (b)

[Contact Us](#)



Practices for grounding and bonding of cable trays

A bare copper equipment grounding conductor should not be placed in an aluminum cable tray due to the potential for electrolytic corrosion of the aluminum cable tray in a moist environment. For such

[Contact Us](#)

Hot DIP Galvanized 400mm 500mm 600mm 800mm Basket Cable

Qiaobang mesh cable trays can be cut to any size using the Qiaobang cutting tool. Here, too, installation is easy and practical: With the Quick connector, prepared trays can be mounted at lightning speed

[Contact Us](#)



Contact Us

For datasheets, pricing, or custom fiber access solutions, please visit:
<https://frindel.es>