

# **25G Optical Module Multimode Self-operated**





## 25G Optical Module Multimode Self-operated

---



### Cisco SFP-25G-SR-S Compatible SFP28 Module,

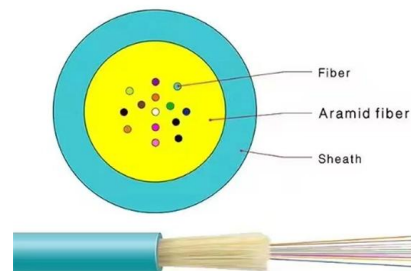
Cisco SFP-25G-SR-S Compatible SFP28 Module, 25Gbps Multimode Fiber (MMF), 100m (328ft), LC Connector, 850nm, MSA 25 Gigabit Optical Transceiver Learn

[Contact Us](#)

### 25G SFP28 Optical Transceivers , Transceiver Module

FS 25G SFP28 optical transceiver solutions offer a wide variety of high-density and low-power connectivity options for 25 Gigabit Ethernet, telecom, and data center.

[Contact Us](#)



### 25G Multimode Optical Module: SFP-25G-SR and SFP-25G-ESR

25G multimode optical modules are mainly used for short-distance data transmission, with high transmission rate and cost performance.

[Contact Us](#)

### How Optical Modules Power the Evolution of 5G Networks

Optical modules enable high-speed, low-latency 5G networks by converting signals for fast, reliable data transfer, supporting seamless

[Contact Us](#)



### **Customized 25G SFP28 850nm 100m Transceiver**

Check Customized 25G SFP28 transceiver module data sheet (multimode, 850nm, 100m, LC connector) and price list on FS , buy it now!

[Contact Us](#)



### **Optimizing Network Upgrades with FS 25G SFP28 Modules**

Discover how FS 25G SFP28 modules provide an efficient, cost-effective solution for network upgrades, addressing the rising demands of digital transformation.

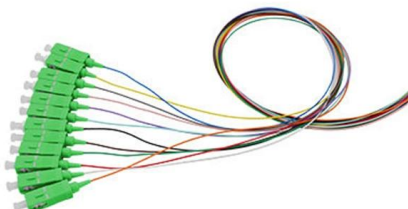
[Contact Us](#)



### **25 Gbps Optical Modules**

For short reach applications, these devices are used with VCSELs and Photodetectors for optical transmission over multimode fiber. Typical reach of these applications is up to 300 meters. For long

[Contact Us](#)





## Demystifying SFP28: The Essential Guide to 25G

SFP28 is a 25G transceiver module for fast, efficient data transfer in modern networks, offering high speed, compatibility, and energy savings.

[Contact Us](#)



### FS 25G SFP28 Transceiver Module

Check FS 25G SFP28 transceiver module data sheet (singlemode, 1310nm, 10km, LC connector) and price list on FS , buy it now!

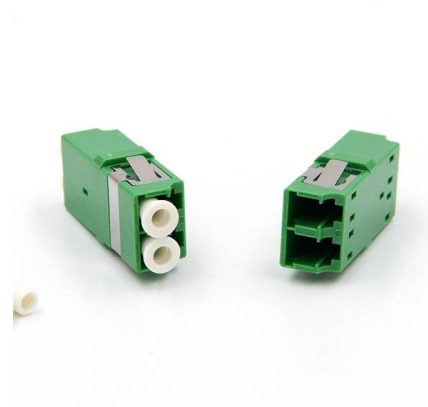
[Contact Us](#)



### SFP28 SR 25GbE Universal Optical Transceiver , GBC

The 25G SFP28 SR optical transceiver transmits data over multi mode fibre at a distance of up to 100m. The transceiver operates on 1 wavelength and works in

[Contact Us](#)



### sfp 25g sr s Transceiver , 850nm Multi-Mode Module

The 25GBASE-SR SFP28 850nm 100m DOM Duplex LC/UPC MMF Optical Transceiver Module is a high-performance 25Gbps optical transceiver designed for multimode fiber (MMF) networks.

[Contact Us](#)



## Cisco 25GBASE SFP28 Modules Data Sheet

The Cisco 25GBASE-ER Module supports a link length of 40 kilometers on standard Single-Mode Fiber (SMF) G.652 at 25G. The module

[Contact Us](#)



## SFP28 25Gbase-SR Transceiver LC - 100m (850nm)

Yamasaki's 25G SFP28 Series is a very compact 25Gb/s optical transceiver module for serial optical communication applications at 25Gb/s. The Yamasaki SFP28-25G/SR Multimode Transceiver is

[Contact Us](#)

## 25G SFP28 Active Optical Cable

25Gb/s SFP28 Active Optical cable transceiver consists of several key components, including the LD driver, limiting amplifier, digital diagnostic monitor, VCSEL laser,

[Contact Us](#)



## 25G SFP28 Optical Transceiver , Fiber Optic Module Factory

FAQ About 25g sfp28 optical transceiver module  
What are the key benefits of using a 25G SFP28 transceiver in modern data center networks? A 25G SFP28 transceiver delivers 25 Gbps bandwidth

[Contact Us](#)



### 25G Multimode Optical Module: SFP-25G-SR and SFP-25G-ESR

SFP -25G-SR optical module adopts the hot-swappable SFP28 package, with an operating wavelength of 850nm. It is a full-duplex transceiver module. It is designed for short-distance data

[Contact Us](#)



### StarTech MSA-Compliant SFP-25G-SR-S SFP28

The 25GbE multi-mode fiber module (SFP28) excels in bandwidth-intensive tasks such as virtualization, efficient data migrations, high-performance storage, high

[Contact Us](#)



### LINK-PP LS-MM8525-S1I - 25GBASE-SR 25 Gbps Multimode Optical

By leveraging multimode fibre (MMF) instead of more expensive single-mode fibre for short-distance links, network operators can upgrade to 25G bandwidth with fewer infrastructure

[Contact Us](#)



### 25G Multi-Mode Optical Module

SFP28 transceiver that supports 25G connections up to 100 m using multi-mode fiber with a duplex LC UPC connector.

[Contact Us](#)



## JTOPTICS 10G/25G Transceivers , High-Performance 10G/25G

Discover JTOPTICS 10G/25G Transceivers for seamless, high-speed data transmission in scalable network environments.

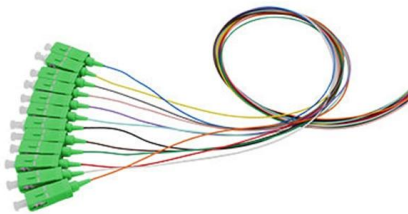
[Contact Us](#)



## 25G Multimode Optical Module: SFP-25G-SR and SFP-25G-ESR

1. 25G Multimode Optical Module Overview 25G multimode optical modules are mainly used for short-distance data transmission, with high transmission rate and cost performance.

[Contact Us](#)



## 25G SFP28 Transceiver

QSFPTTEK offers a 25G SFP28 high-performance Active Optical Cables integrated cable that can provide an ideal alternative solution for high-speed cables and short-distance SFP28 optical modules.

[Contact Us](#)



## SFP28 25G SR vs 10/25G SR: Choose the Right

Compare SFP28 25G SR and 10/25G dual-rate modules in speed, compatibility, and use cases to choose the right fit for your evolving network needs.

[Contact Us](#)



## **An In-depth Guide to 25G SFP28 Optical Transceiver**

Discover the advantages, specifications, and applications of 25G optical transceiver solutions--for high-speed data center, enterprise, and telecom networks.

[Contact Us](#)



### **25G SFP28 SR VCSEL 850nm 100m Optical Transceiver**

GIGALIGHT 25G SFP28 SR optical transceiver modules are used for short-distance interconnections between equipment within data centers or for 5G pre-transmission, and are compliant with the IEEE

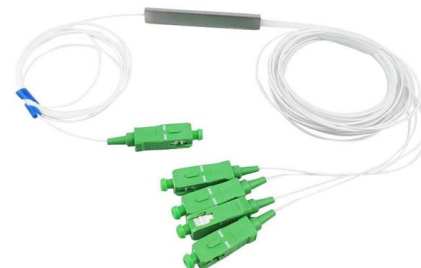
[Contact Us](#)



## **Everything You Need to Know about 25G Optics**

The 25G SFP28 optical module is an optical module with a transmission rate of 25Gbps. It is a new Ethernet standard with many

[Contact Us](#)



### **Understanding the SFP28-25G-SR Transceiver and Its**

The SFP28-25G-SR transceiver delivers 25Gbps speeds, short-range fiber connectivity, and reliable performance for data centers and enterprise networks.

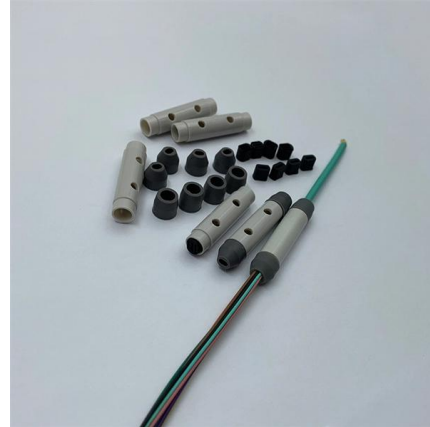
[Contact Us](#)



## 25G SFP28 PRODUCT FAMILY

25G SFP28 PRODUCT FAMILY DESCRIPTION The 25GBASE SFP28 modules allow a wide variety of 25 Gigabit Ethernet connectivity options for data center, enterprise, and service provider

[Contact Us](#)



## Contact Us

---

For datasheets, pricing, or custom fiber access solutions, please visit:  
<https://frindel.es>