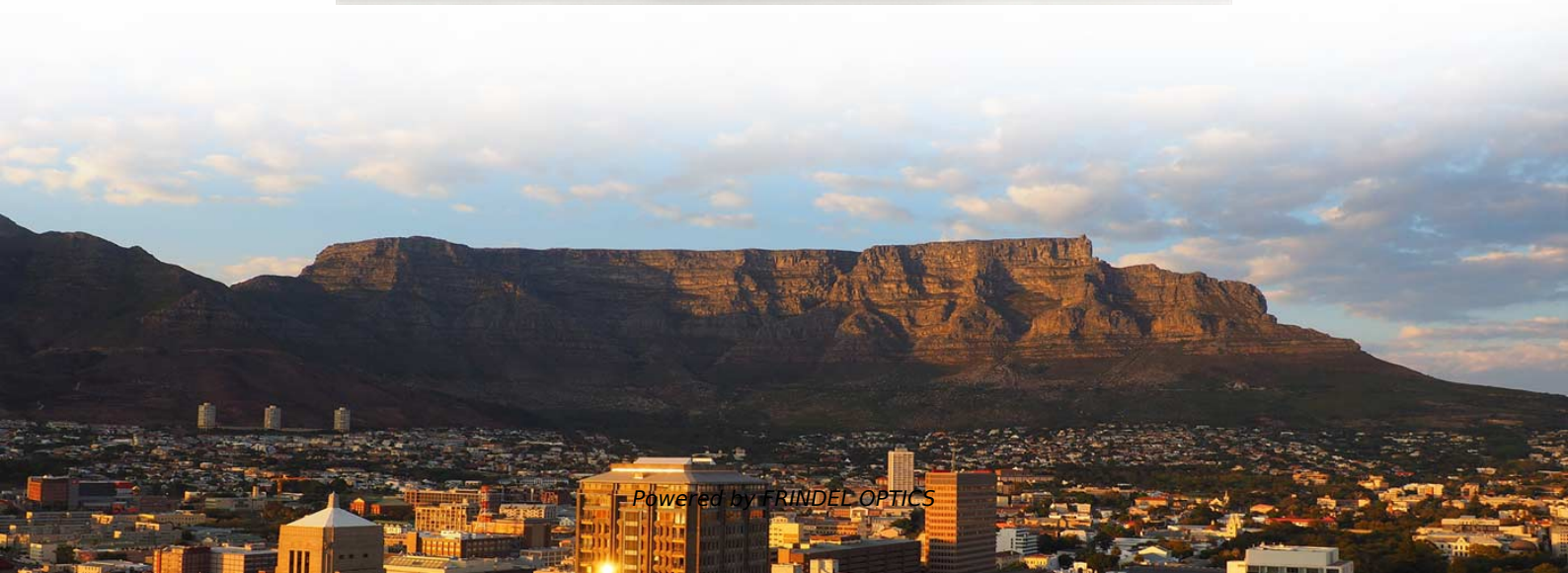


2013 New Standards for Cable Trays





2013 New Standards for Cable Trays



Cable Trays Selection Guide: Types, Features,

Cable trays are components of support systems for power and communications cables and wires. A cable tray system supports and protects both power and

[Contact Us](#)



CABLE TRAY

This standards publication was developed by the NEMA Metal Cable Tray and Nonmetallic Cable Tray Sections. Section approval of the standard does not necessarily imply that all section members voted

ITER Cabling Handbook

All the cable trays have the standard configuration in the nuclear buildings, where all the cable trays have a cover to minimize the fire propagation. In those regular areas, the intrusive Safety train will

[Contact Us](#)



INFORMATION ON STANDARDS FOR CABLE TRAYS - Kiraç Metal

NEMA VE1: Specifies requirements for metal cable trays and associated fittings designed for use in accordance with the rules of Canadian Electrical Code and the National Electrical Code.

[Contact Us](#)



Ref No: 98-010

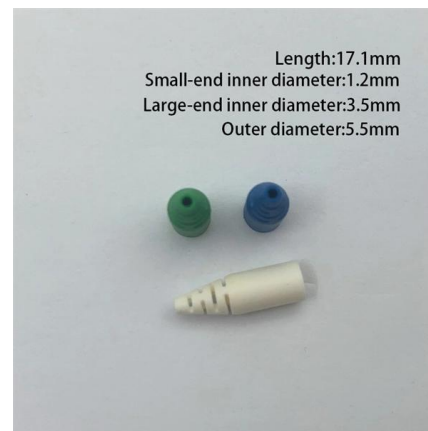
6.3 Supplementary Coatings: At the option of the manufacturer, a supplementary coating may be applied to the cable tray systems, but such coating does not fall within the scope of this Standard.

[Contact Us](#)

Cable Tray Systems: Requirements and Best Practices

Comprehensive guide to cable tray systems requirements: tray types, materials, loading, supports, bonding, routing, and best practices for safe electrical cable management.

[Contact Us](#)



Understanding IEC 61537: A Comprehensive Guide to

Focusing on the technical aspects of cable tray systems, IEC 61537 outlines strict requirements and regulatory guidelines for various technical indicators.

[Contact Us](#)

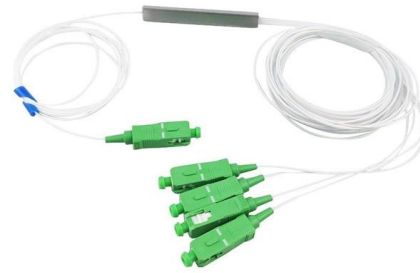




Best Practice Guide to Cable Ladder and Cable Tray Systems

This guide covers cable ladder systems, cable tray systems, channel support systems and associated supports intended for the support and accommodation of cables and possibly other electrical

[Contact Us](#)



Technical bulletins , Cable Tray Institute

Technical Bulletins CTI has committed most of its energies towards support services. The Cable Tray Institute is now making available our complete library of technical articles which have appeared in the

[Contact Us](#)

Cable Tray Installation Guidelines

NEMA VE 2-2013 Cable Tray Installation Guidelines. Covers support, straight section, fitting installation, field modifications, grounding, and bonding.

[Contact Us](#)



Strengthen door locks
More durable and aesthetically pleasing



Grounding screw
More aesthetically pleasing and safer



Removable hinges
Make operation more convenient



Sealing strip
Dustproof and waterproof

CABLE TRAYS GENERAL INFORMATION AND

General information of Kiraç Metal Cable Trays and installation guide are arranged in accordance with IEC 61537 standards and this document has been prepared for

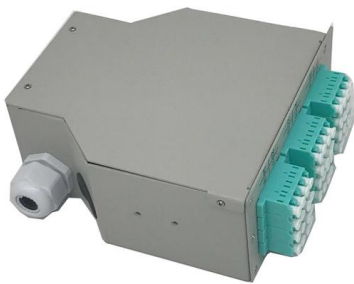
[Contact Us](#)



GUIDE CABLE TRAYS TECHNICAL

Specifies requirements for metal cable trays and associated fittings designed for use in accordance with the rules of Canadian Electrical Code, Part I and the National Electrical Code®

[Contact Us](#)



Cable Tray Installation Guidelines

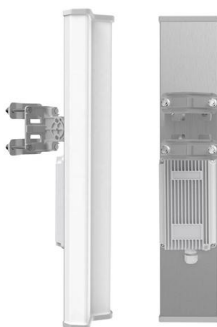
Addresses shipping, handling, storing and installing cable tray systems. Information on maintenance and system modification is also provided.

[Contact Us](#)

Standard for Installing Metal Cable Tray Systems

documents for electrical construction Metal cable tray systems for power communications cabling shall be installed in accordance with NECA/NEMA 105, Standard for Installing Metal Cable Tray Systems

[Contact Us](#)



Codes and Standards , Cable Tray Institute

This standard specifies the requirements for nonmetallic cable trays and associated fittings designed for use in accordance with the rules of the Canadian Electrical Code (CEC) Part 1, and the National

[Contact Us](#)



Guide to cable support systems

Universal systems for cable support structures are used for small loads. The systems are suspended from the ceiling with threaded rods, stand-off brackets allow raised floor mounting of cable trays,

[Contact Us](#)



Cable Tray Design and Standards Guide

1. The document outlines codes and standards that must be followed for design and construction of cable trays and their components. Standards listed include those

[Contact Us](#)



Document DICOS

A channel cable tray can be added to an existing cable tray system using the method illustrated in Figure 3-89 to add approved cabling systems. Refer to the loading information of the existing cable

[Contact Us](#)



FactSheet

FactSheet Electrical Safety Hazards of Overloading Cable Trays According to the 2005 National Electrical Code® (NEC), a cable tray system is " unit or assembly of units or sections and

[Contact Us](#)



Essential Cable Tray Standards: Your Guide to Compliance & Safety

Compliance with cable tray standards is not just about following legal requirements; it's about ensuring safety for both personnel and equipment. Non-compliance can lead to serious accidents, including

[Contact Us](#)



NEMA vs IEC vs BS: Global Cable Tray Standards

When specifying cable trays for an international project, the first question is always: Which standard applies?

[Contact Us](#)

NEMA VE 2 : 2013 CABLE TRAY INSTALLATION GUIDELINES

Abstract Describes shipping, handling, storing, and installing cable tray systems and provides information on maintenance and system modification.

[Contact Us](#)



Guide to cable support systems

Four different mesh cable tray types are available, depending on the requirements, area of application and cable quantity. The innovative Magic connection system of the GRM and G-GRM mesh cable

[Contact Us](#)



IEC Standard for Cable Tray: Complete Technical Guide

One of the most recognized frameworks globally is the IEC standard for cable tray systems. This standard ensures safety, durability, and performance

[Contact Us](#)



Document DICOS

For Cable Tray Installers: NEMA VE 2-2013 (hereinafter referred to as NEMA VE 2) is intended as a practical guide for the proper installation of cable tray systems.

[Contact Us](#)

Cable Tray Technical Guide A practical guide to product selection and

Cable Tray Technical Guide A practical guide to product selection and installation This guide for engineers and installers has been developed by ABB as a practical reference regarding cable tray

[Contact Us](#)



Contact Us

For datasheets, pricing, or custom fiber access solutions, please visit:
<https://frindel.es>