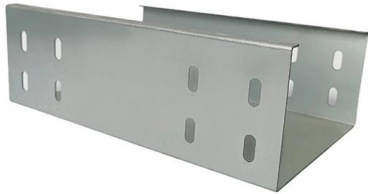


19-inch 4U chassis frame





19-inch 4U chassis frame



Rackmount chassis Server case 19 inch ATX 4U N407

KI-N407 is a reliable and stable 4U-high industrial computer chassis use by 1.2mm high end SGG steel The full size I/O supports all ATX motherboard with a Dual

[Contact Us](#)

19-inch ATX rack-mount 4U server case

Very robust 4U 19-inch rack-mount server chassis at a budget-price - a good basis for a broad range of applications.

[Contact Us](#)



4U 19" Cases , Newark Electronics

Buy 4U 19" Cases. Newark Electronics offers fast quotes, same day dispatch, fast delivery, wide inventory, datasheets & technical support.

[Contact Us](#)



4 U 19 Inch Rackmount Cases & Chassis for sale , eBay

Get the best deals on 4 U 19 Inch Rackmount Cases & Chassis and find everything you'll need to improve your home office setup at eBay . Fast & Free shipping on many items!



Product Catalog



Server case rackmount chassis 19 inch IPC ATX 4U

Chassis box for mounting a CPU in a rack 19 "cabinet. Specially designed housing for the installation of computer equipment of intensive use such as servers,

[Contact Us](#)

Extreme Machines XtremeMiner 4U Rack Mount CPU

XtremeMiner 4U Rack Mount CPU Server Chassis for 19 Inch U Rack (with Fixing clamp Mounting) 4U Rack Server cabinet specially designed for High work

[Contact Us](#)



4U-Leading Rackmount Chassis Server case 1U, 2U, 3U

Rackmount chassis DVR CCTV 19 inch EATX microATX 4U N455D2 Drives 3 x 3.5" (int.) or 2 x 3.5 + 1 x 2.5 Motherboard Size EATX, ATX motherboards Dimension

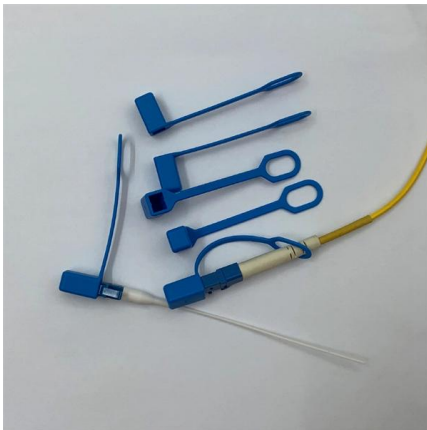
[Contact Us](#)



Rackmount chassis Server case 19 inch EATX 4U N407L

KI-N407L is a reliable and stable 4U-high server chassis. The full size I/O supports all ATX motherboard with a Dual-core/ Quad-Core processors and the backplane

[Contact Us](#)



UNYKAch

A professional chassis for mounting CPUs in 19" rack cabinets. It is a specially designed enclosure for the installation of high-performance computer equipment

[Contact Us](#)

19" rackmount chassis , Newegg

4U all-in-one machine / 19-inch rack-mounted industrial control chassis / supports standard industrial backplane or industrial motherboards of 12 x 9.6 inches and below / empty chassis.

[Contact Us](#)



19" Industrial Rack-Mount Server Chassis, 4UH, IPC 4U

The IPC 4U 4129L is a 4U case with a depth of 695mm and thus offers sufficient space for high-performance server systems. In the front are two removable drive

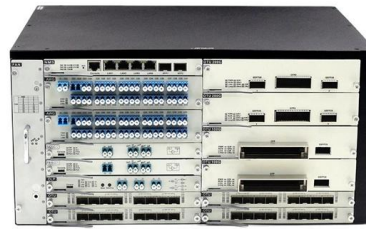
[Contact Us](#)



2-Post 4U Desktop Server Rack, Small Open Frame

2-POST 4U DESKTOP SERVER RACK: Open frame rack for 19" rackmount networking / AV / media / IT equipment; Ideal for use on a workbench or small

[Contact Us](#)



19-inch 4U rack-mount server chassis

4U rack-mountable server-chassis for 19-inch racks and cabinets. Find a large variety at yakkaroo Serversysteme.

[Contact Us](#)

4u 4 Post Open Frame Rack

Discover the ultimate solution for your server and network equipment with our 4U Open Frame Rack. Designed for durability and versatility and max air flow, this

[Contact Us](#)



19" Rackmount Chassis

Optimize your server infrastructure with our 19" Rackmount Chassis solutions. These 4U standard rack-mounted industrial computers are engineered for maximum reliability and expansion.

[Contact Us](#)



19" Rack-Workstations konfigurieren & bestellen , MIFCOM

Hier findest Du 19" Rack-Workstations im 4HE bzw. 4U Chassis. Durch den praktischen 19" Rack Standard kannst Du unsere 4U Systeme platzsparend und problemlos in einen 19" Schrank platzieren.

[Contact Us](#)



19" rack chassis , Newegg

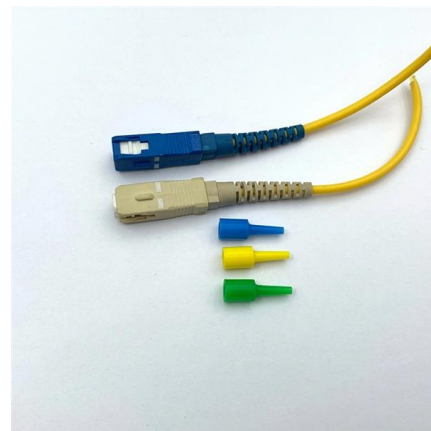
4U all-in-one machine / 19-inch rack-mounted industrial control chassis / supports standard industrial backplane or industrial motherboards of 12 x 9.6 inches and below / empty chassis.

[Contact Us](#)

Chieftec

The UNC-411E-B is the flexible 4U E-ATX server rack chassis for even the most demanding systems. The robust build quality with 1.2mm thick SECC steel

[Contact Us](#)



Rear of the optical fiber distribution box



TPS 4U Server Chassis

TPS 4U Chassis: High-capacity 19-inch rack mount server chassis. Tool-less design, easy maintenance. Perfect for data centers and IT equipment.

[Contact Us](#)



4U Server Rack - 19 Inch Data & Network Cabinets

What equipment can be stored in a 4U server rack? The 4U cabinet can accommodate a variety of IT equipment, such as servers, network switches, UPS

[Contact Us](#)



RIVECO 4U 19" Wall Mount Network Rack - 17.7" Deep

RIVECO 4U 19" Wall Mount Network Rack - 17.7" Deep 2 Post Open Frame Cabinet Easy Assembly Firm Constructed Shelf for Internet/Server/AV/Home

[Contact Us](#)



19" Industrial Rack-Mount Server Chassis, 4UH, IPC 4U

The IPC 4U 4129L is a 4U case with a depth of 695mm and thus offers sufficient space for high-performance server systems.

[Contact Us](#)



AMG2027 DIN RAIL 4U 19-INCH RACK CHASSIS

Industrial 19inch Racks The AMG2027 is a DIN rail rack chassis for standard 19 inch equipment racks. The 4U profile allows for mounting any combination of AMG DIN rail mountable products along with

[Contact Us](#)



Introducing the UNYKA PRO 19" 4U Rack Case UK4339H. A professional chassis for mounting CPUs in 19" rack cabinets.

[Contact Us](#)



19" Rack Mount Enclosures

Yongu provides high quality 19" rack mount enclosure cases in 1U, 2U, 3U, 4U, 5U heights for mounting directly onto 19" racks and cabinets. Customization of enclosures and 19 inch panels are also possible.

[Contact Us](#)

Contact Us

For datasheets, pricing, or custom fiber access solutions, please visit:
<https://frindel.es>