

18-Circuit DTU Distribution Network Automation Terminal





Overview

The DSY-D6000 distribution network automation control terminal (DTU) is a monitoring terminal product developed for the increasingly widespread application of ring main units and small switching stations in urban power grids. NSA3100HD_D30 Three-remote Distribution Terminal Unit (DTU) is a remote terminal for distribution automation systems independently developed by TBEA. Distribution Automation Terminals (DTU and FTU) by Application (Substation, Pole Mounted Switch, Distribution Transformer, Others), by Types (Distribution Terminal Unit (DTU), Feeder Terminal Unit (FTU)), by North America (United States, Canada, Mexico), by South America (Brazil, Argentina, Rest of. It is located at the communication layer of the system, undertaking communication tasks with the control layer and the higher-level dispatching layer at the upper level, and integrating various intelligent devices of different manufacturers and models at the lower level.



18-Circuit DTU Distribution Network Automation Terminal



FRTU-DTU-Smart terminals in power-distribution networks-Product

The transmission lines can be divided into buried cables and overhead types TU(DTU)can collect data, record power consumption, control remotely, solve the faults on site and forward

[Contact Us](#)

Centralized Distribution Automation Distribution

The ZT-D30 Distribution Automation Substation Terminal DTU is primarily applied in distribution automation systems. It is installed in locations such as 10KV ring main

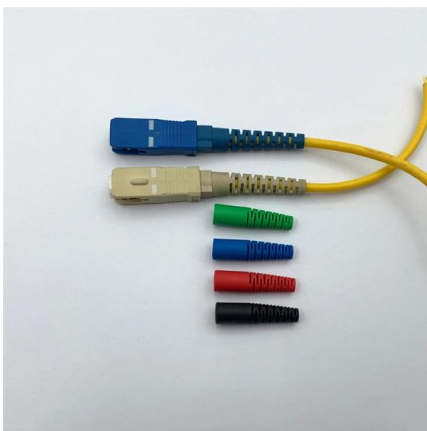
[Contact Us](#)



DTU distribution network automation terminal device

Short Description: The DTU series distribution automation terminal device is a protection and monitoring terminal product developed for multi line collection sites such as ring main units and small switch

[Contact Us](#)

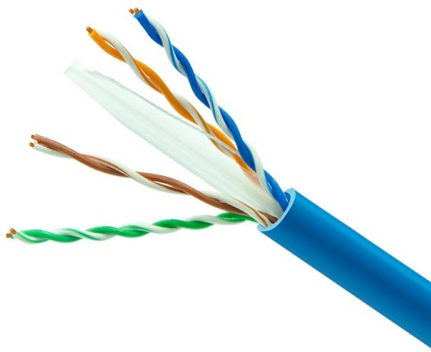
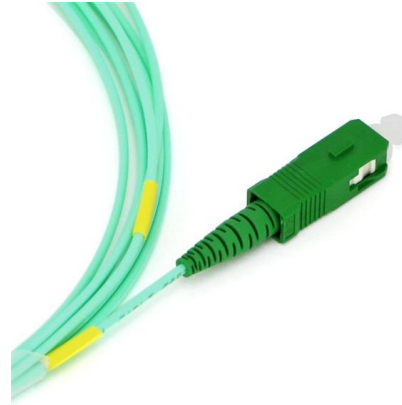


Substation Terminal Unit for DTU Distribution Network Automation



NSA3100HD_D30 Three-remote Distribution Terminal Unit (DTU) is a remote terminal for distribution automation systems independently developed by TBEA. It comes with various models, suitable for

[Contact Us](#)



Distribution Automation Terminals (DTU and FTU) Market Analysis

Discover the booming market for Distribution Automation Terminals (DTUs & FTUs)! This comprehensive analysis reveals key growth drivers, market size projections (2025-2033), leading

[Contact Us](#)

Intelligent acceptance systems for distribution automation terminals

Distribution automation terminals are mainly used for monitoring and controlling ring main units, reclosers, pole-mounted sectional switches, distribution transformers, and other components in

[Contact Us](#)



DTU Distribution Automation Terminal , Smart Grid Control Unit

Main features The remote terminal for DTU distribution network automation adopts high-performance ARM9 embedded chips as the main communication CPU and ARM7 microprocessors as the

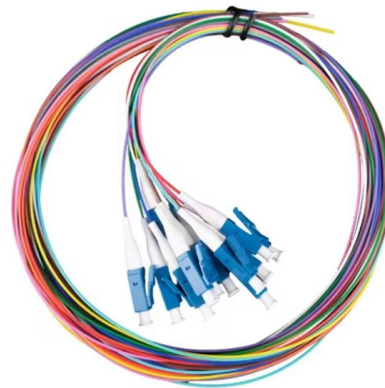
[Contact Us](#)



DSY-D6000 Distribution Network Automation Control

The DSY-D6000 distribution network automation control terminal (DTU) is a monitoring terminal product developed for the increasingly widespread application

[Contact Us](#)



Distribution Terminal Unit (DTU)-Beijing HCRT Electrical

It is a new generation of microcomputer-based distribution automation remote terminal devices that integrates telemetry, telesignaling, remote control, protection, and communication functions.

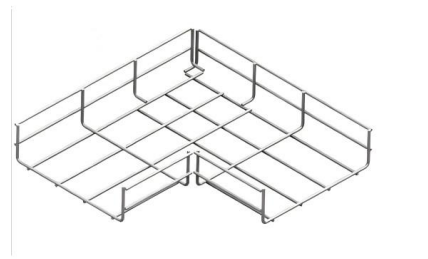
[Contact Us](#)



CKPM602 Distribution Automation Terminal

Product Overview The CKPM602 Distribution Automation Terminal (hereinafter referred to as DTU) is suitable for distribution networks with voltage levels of 10kV and above. It can be

[Contact Us](#)



Differences Between DTU, FTU, TTU, and RTU

Understand the differences between DTU, FTU, TTU, and RTU in power distribution automation. Explore how these smart grid devices support monitoring, control,

[Contact Us](#)



AD560 Series of Intelligent Distribution Terminal Unit

AD560 series of DTU are specially designed for power distribution network according to national or higher standards, with reference to technical level and development

[Contact Us](#)

Mesh door/glass door optional



Sp-601 glass door

Sp-602 mesh door



Application of IEC 61850 for distribution network

This paper presents one of the use cases which applies distributed control on an open-loop distribution feeder. The system consists of a number of

[Contact Us](#)

Intelligence Assists Distribution Network Management--dtu

DTU distribution network automation terminal is such an intelligent device, which can greatly improve the efficiency of distribution network management and reduce human errors, and provide timely and

[Contact Us](#)



Intelligence Assists Distribution Network Management--dtu Distribution

Linkage application: DTU distribution network automation terminal can be used for linkage with other power distribution equipment, such as smart meters, smart switches, etc. to work together to achieve

[Contact Us](#)



A Distribution Network Automation Communication Module Based

The communication module for distribution network automation based on 800MHz wireless communication technology is proposed, which can penetrate the walls of underground openings and

[Contact Us](#)



Optimal Placement of Multiple Feeder Terminal Units

In order to solve the placement problem of three kinds of feeder terminal units (FTU) in the distribution network, this paper proposes a novel

[Contact Us](#)



THD1000B4824Z-A-3

THD1000B4824Z-A-3 This product is a battery-powered switch-mode power supply for distribution automation terminals (DTUs), compliant with the requirements of power distribution network

[Contact Us](#)



DTU Distribution Automation Terminal , Smart Grid Control Unit

DTU distribution automation terminal for smart grid control, remote monitoring and feeder automation. Reliable solution for modern power distribution networks.

[Contact Us](#)





Feeder Automation FTU/DTU/TTU - Smart Grid IED

Feeder and distribution automation terminals (FTU, DTU, TTU) sit between substation control systems and field devices on the distribution network. This

[Contact Us](#)



CSP6000 series distribution automation station terminal_OLE

It is suitable for multi-circuit centralized monitoring and control applications such as power distribution room, ring network cabinet, opening and closing station, box-type substation, etc.

[Contact Us](#)

Exploring Innovations in Distribution Automation Terminals (DTU and

Discover the booming market for Distribution Automation Terminals (DTUs & FTUs)! This comprehensive analysis reveals key trends, growth drivers, and leading companies shaping the

[Contact Us](#)



DTU distribution network automation terminal device

The DTU series distribution automation terminal device is a protection and monitoring terminal product developed for multi line collection sites such as ring main units and small switch stations in

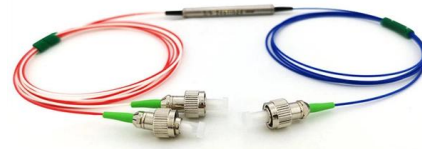
[Contact Us](#)

Microsoft Word



2.1 Interconnectedness of Distribution Automation Functions Individual distribution automation (DA) functions, such as monitoring VArS on a feeder or detecting faults on a circuit, cannot have their

[Contact Us](#)



Deep Dive into Distribution Automation Terminals (DTU)

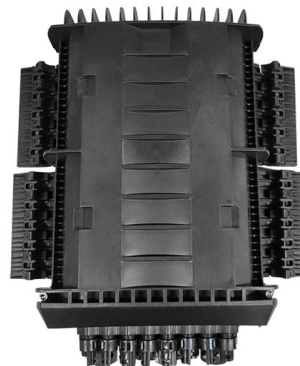
Distribution Automation Terminals (DTU and FTU) Concentration & Characteristics The global market for Distribution Automation Terminals (DTUs)

[Contact Us](#)

Understanding the Differences Between DTU, FTU, and TTU in the

Distribution Remote Terminal Units (RTUs), Distribution Terminal Units (DTUs), and Transformer Terminal Units (TTUs) serve distinct functions in the electrical industry. Let's delve into their

[Contact Us](#)



DTU Distribution Terminal: A New Era Of Smart Energy Management

The emergence of DTU power distribution terminal means that intelligent energy management has entered a new era . Compared with traditional energy management, DTU power distribution

[Contact Us](#)



Read The Difference Between DTU, FTU, TTU, RTU In One Article

The distribution network automation system generally consists of the following levels: distribution master station, distribution electronics station (standing in the substation, optional), distribution remote

[Contact Us](#)



AD560 Series of Intelligent Distribution Terminal Unit

AD560 series of auto distribution terminal unit (DTU) are a new generation of auto DTU independently developed by Xiamen Huatech Switchgear Co., Ltd.

[Contact Us](#)

Contact Us

For datasheets, pricing, or custom fiber access solutions, please visit:
<https://frindel.es>