

# 10kV busbar fixing hardware





## Overview

---

Busbar supports are standardized mounting devices for busbars used for the central distribution of electrical energy in switchgear and distribution boxes. Product Overview□The Bus Tie Switchgear is a key component in medium-voltage (MV) power systems, connecting and isolating busbar sections. Rated for 10KV (IEC) to 15KV (ANSI), it ensures load balancing, power continuity, and quick reconfiguration during faults or maintenance. The primarily activity at this time was the development of Power connectors to deliver connectivity solutions to the Transmission Grids over decades from 10kV applications till now 1200kV Ultra high voltage substations. Their role is essential in ensuring efficient current flow, reducing energy loss, and.



## 10kV busbar fixing hardware

---



### Busbar supports

SOCOMEC insulating busbar supports enable the fixing and holding in place of copper or aluminium busbars or busbar systems during a short-circuit. Insulators of Polyester without halogen.

[Contact Us](#)

### Bus Tie Switchgear , Bus Sectionalizing Switchgear ,

Product Overview: The Bus Tie Switchgear is a key component in medium-voltage (MV) power systems, connecting and isolating busbar sections. Rated for 10KV

[Contact Us](#)



### Bus Bar Connectors , Grounding & Electrical Bus Bar

Bus bar connectors operate by clamping, bolting, or blind-connecting onto the bus bar surface to create a low-resistance electrical path. Their design ensures:

[Contact Us](#)



### busbar catalogue

BUSBAR SUPPORTS Busbar Supports  
INTRODUCTION: The Bus Bar System Insulators has been designed for a variety needs in Electrical Panels, Switch Boards and Electrical Distribution Panels



### Electrical busbar system

Electrical busbar systems (sometimes simply referred to as busbar systems) are a modular approach to electrical wiring, where instead of a standard cable wiring to

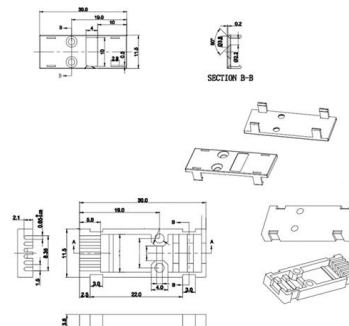
[Contact Us](#)



### Copper Busbar Jointing Methods

Efficient joints in copper busbar conductors can be made very simply by bolting, clamping, riveting, soldering or welding. Bolting and clamping are

[Contact Us](#)



### Busbar System , KX electrical busbar systems , EAE

KX Electrical Busbar systems are designed and produced for high power distribution with ratings from 400A to 6300A. EAE Busbar UK.

[Contact Us](#)





## Installation of hard busbars, wall bushings and post

11.2 Installation of hard busbars, wall bushings and pillar insulators 1. Production and installation of busbars In the power transformation and

[Contact Us](#)



## Busbar Clamps and Connectors , nVent ERIFLEX

Busbar Clamp that connects two copper busbars together, or nVent ERIFLEX Flexibar, to a copper busbar without the need for drilling.

[Contact Us](#)

## Design Guide for bus bars

Mounting To mount a bus bar to an assembly structure, hardware (studs, holes, etc.) can be manufactured into the conductors. An alternative ground plane may be

[Contact Us](#)



## Business Documentation (DBD)

The scope of this document covers open terminal busbar systems and associated connectors for use within outdoor primary substations up to and including 132kV. The products described within this

[Contact Us](#)



### Mounting Bracket for bus bar 1, 2-Poles , nVent SCHROFF

Mounting Brackets for Busbars or Busbar Modules are load circuit isolated mounting units for grounding rails. There may be adapters with assigned current ratings

[Contact Us](#)

### STAINLESS STEEL WIRE MESH

Long-lasting and durable

Comprehensive specifications

Customized non-standard products



### Tubular Busbar And Connectors , Copper And

We offer Copper and Aluminium Tubular Busbars in a range of sizes, as well as the accessories to suit 33kV, 66kV and 132kV substations.

[Contact Us](#)

### Bolts for Bus bar Connections , Eng-Tips

We are having several different opinions regarding Bolts used for Busbar connections of MV Cables as well as motor terminations in drawer compartments. Since we are working in Europe.

[Contact Us](#)



### Design Guide for bus bars , Mersen

Mounting To mount a bus bar to an assembly structure, hardware (studs, holes, etc.) can be manufactured into the conductors. An alternative ground plane may be

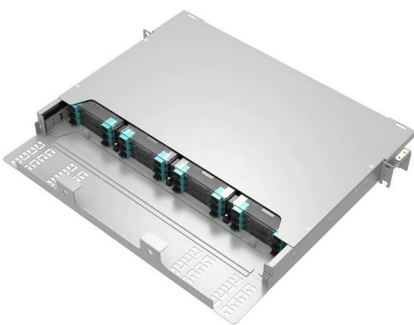
[Contact Us](#)



## Copper for Busbars - Guidance for Design and Installation

For busbar systems, the maximum working current is determined primarily by the maximum tolerable working temperature, which is, in turn,

[Contact Us](#)



### Busbars Supports , Socomec

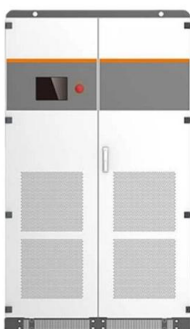
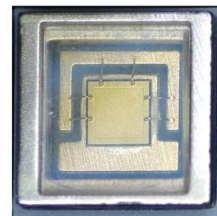
Insulating busbar supports enable the fixing of copper or aluminum busbars and are tested to hold them safely during a short circuit.

[Contact Us](#)

### Busbar Power Connectors/Distribution , High Current

These board-to-busbar connectors are designed to meet OCP V3 power distribution architecture standards and are ideal for use in power shelves,

[Contact Us](#)



### SPS Busbar Supports

SPS Busbar Supports are standardized busbar mounts with a fire protection rating of UL 94 V0 and type-tested according to DIN EN 61439-1.

[Contact Us](#)



## Catalogue SIMABUS-EPP-2829-8-16 rev2-HD

Bolted couplers must be installed at busbar location where the bending moment on the concerned span is null or minor. The figures in front indicate the two typical bus system configurations depending on

[Contact Us](#)



### Factory Direct: MNP Indoor Bar Supports For Substation Fitment

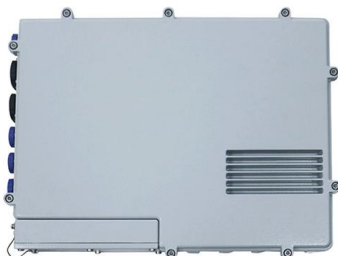
The MNP indoor rectangular busbar fixing hardware is suitable for power plants, substations and various Fixation of soft busbars on post insulators in a power distribution device.

[Contact Us](#)

### SPS Busbar Supports

Busbar Supports are used to securely and stably attach busbars to walls, ceilings or other structures. They are designed to withstand the forces of a short circuit, even

[Contact Us](#)



### STOCK RANGE OF BUSBAR INSULATORS AND COPPER

Comprehensive range of high quality busbar insulators. Screw fixings from 6 mm to 10 mm. Voltage withstand from 6kV to 25kV. Heights from 25 mm to 76 mm. High tensile and torque strength.

[Contact Us](#)



## Busbar Accessories , nVent ERIFLEX

Busbar Accessories Gain design and assembly flexibility The full range of nVent ERIFLEX busbars and busbar accessories are intuitively designed to help you make optimal electrical connections. We

[Contact Us](#)



## Catalog Extract LV 10 · 10/2022

Our busbar systems for electrical installations offer a particularly easy way of fitting distribution systems with electrotechnical components. The modular design saves space, while quick assembly contacts

[Contact Us](#)

## Contact Us

---

For datasheets, pricing, or custom fiber access solutions, please visit:  
<https://frindel.es>