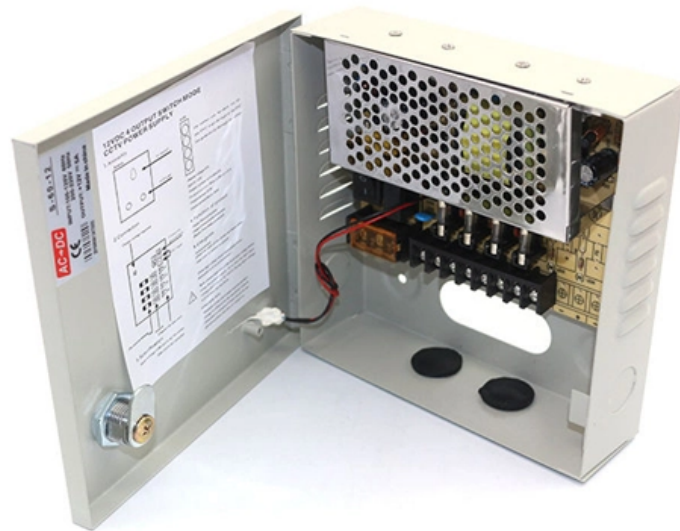
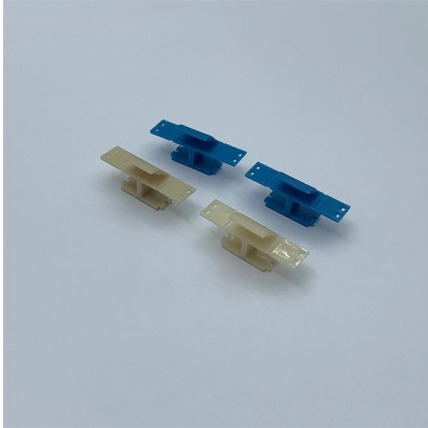


10kV busbar energized parts undergoing maintenance





10kV busbar energized parts undergoing maintenance



Busbar Maintenance on Ships - Marine Engineering

Safety If any maintenance is planned for busbars, highest standards of safety are required as even the tiniest mistake can lead to electrocution and even death of

[Contact Us](#)

Installation guidelines for MV metal-enclosed switchgear

Metal-enclosed switchgear What does it mean 'metal-enclosed switchgear'? Metal-enclosed switchgear and controlgear are generally assembled

[Contact Us](#)



Busbar Maintenance & Testing , Met Group

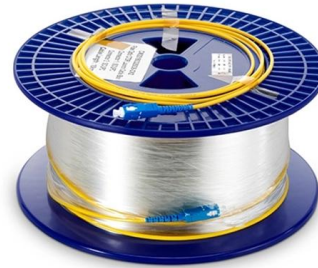
We provide comprehensive inspection and maintenance services for all existing busbar systems. Our team utilises fully calibrated equipment for inspecting, servicing, and conducting electrical tests and

[Contact Us](#)

High-Voltage Assembled Cabinets: 2026 Maintenance Guide

Master high voltage cabinet maintenance. Learn annual inspection steps for Chuanli Assembled Cabinets, busbar torque specs, and XGN43 Series RMU safety.

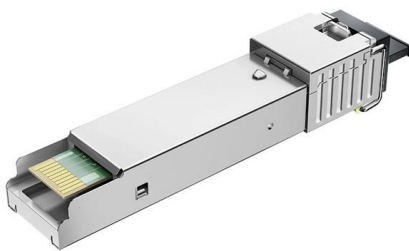




Plant Operations & Maintenance

As GKW use proprietary designs across a range of busduct products, we have the ability to test and modify maintenance procedures in-house before applying them

[Contact Us](#)



MEDIUM VOLTAGE SWITCHGEAR

Earthing switch is used to connect the cables or busbar to the earth for safety during maintenance and other works to be executed on the switchgear. It has a fast acting mechanism independent to the

[Contact Us](#)



Busbar Maintenance Aboard Seagoing Vessels: An

Understanding busbar, what they are, and why they are an integral part of ships. How maintenance is carried out on busbars in ships to ensure safety

[Contact Us](#)



Maintenance and Servicing of Aluminum Busbar Systems

Effective busbar maintenance is key to sustaining optimal performance and safety standards. In conclusion, committing to a comprehensive

[Contact Us](#)



Electrical Busbars

Electrical busbars conduct high current within power systems. Learn about types, maintenance, failures, and how to extend their lifespan.

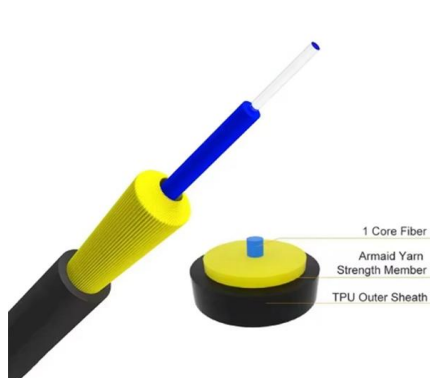
[Contact Us](#)



P-BA-0000211_mIHVZ_V11

Maintenance should be performed only by qualified personnel. The use of unauthorized parts in the repair of the switchgear or tampering by unqualified personnel will result in dangerous

[Contact Us](#)



10kV High Voltage Power Equipment Preventive

Based on the results of these inspections and tests, appropriate maintenance measures and operational protocols are implemented to maintain

[Contact Us](#)



Microsoft PowerPoint

Preventive maintenance of switchboards is typically carried out as a part of a routine shut down in process industry plants. Periodically the following checks are mandatory as described in the MNS

[Contact Us](#)



10kv Bus Bar pt Feeder

Good Answer: If you close the breaker without a PT in position, to anyone looking at local or remote meters or to some of the protection, it will

[Contact Us](#)



415V Bus Maintenance Procedure

This document outlines a procedure for maintaining a 415V bus. It lists 17 items that should be inspected or actions that should be taken on a half-yearly basis to

[Contact Us](#)



Electrical Substation Design: An Introduction

This post covers the principles of electrical substation design, including key concepts, components, and concerns for efficient and dependable power

[Contact Us](#)





Busbar Testing Procedure

Discover the essential procedures & best practices for successful busbar testing. Our comprehensive post covers preparation, equipment setup,

[Contact Us](#)



Service Equipment BARRIERS 230.62 (C)

Barriers provide physical separation (adequate distance or an obstacle) between load terminals and the service busbars and terminals. This

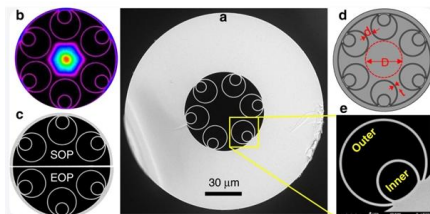
[Contact Us](#)

Maintenance and Repair Items for 10kV High-Voltage Switchgear

How to maintain 10kV switchgear? Covers visual, thermal, and insulation checks--view the standard procedure now to prevent failures and ensure safe, reliable power operation!



[Contact Us](#)



1926.960

Requirements for working without electrical protective equipment. When an employee performs work near exposed parts energized at more than 600 volts, but not more than 72.5 kilovolts, and is not

[Contact Us](#)



Inspection and Maintenance

Perform inspection and maintenance after the first year and annually, or as operating conditions require. Abnormal operation or conditions may require immediate corrective action. During the inspections

[Contact Us](#)



Busbar Arrangements in Substations , Terminal and

Busbar are the important components in a sub-station. There are several Busbar Arrangements in Substations that can be used in a sub-station.

[Contact Us](#)

Barriers in Electrical Equipment , Captain Code 2023 Web Portal

Barriers shall be placed such that no energized uninsulated, ungrounded busbar or terminal is exposed to inadvertent contact by persons or maintenance equipment while servicing load terminations in

[Contact Us](#)



Electrical Busbars: How to monitor these assets

As an essential part of electrical installations, understanding the functionality, types, and applications of busbars is crucial to ensure the maintenance of these

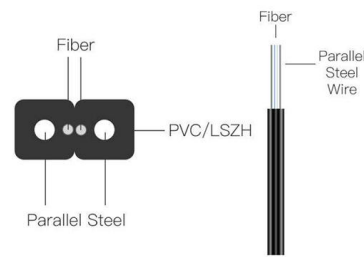
[Contact Us](#)



Busbar System Maintenance and Troubleshooting: Engineer's

This handbook covers the complete maintenance and troubleshooting framework for metal-enclosed busbar systems -- IPB, NSPB, SPB, and busway -- from daily monitoring

[Contact Us](#)



I need help understanding this TIA , Information by Electrical

I must be getting old as I am not certain what this means or how it is possible. It is a TIA 1. Revise paragraph 215.15 to read as follows: 215.15 Barriers. Barriers shall be placed such that no

[Contact Us](#)

Bus Spacings in Metal-Enclosed Switchgear

When considering bus spacings, two dimensions are important. The first is clearance, or the distance through air between conductors of opposite polarity or between an energized conductor and ground.

[Contact Us](#)



Contact Us

For datasheets, pricing, or custom fiber access solutions, please visit:
<https://frindel.es>