

# 105 Lighting Distribution Box Dimensions





## 105 Lighting Distribution Box Dimensions

---



### Distribution Box

Amphenol LTW's distribution boxes facilitate efficient cable management, easy installation with pre-wired configuration, and provides a centralized distribution point for M8 and M12 connectors.

[Contact Us](#)

### IDE Electric

Surface enclosures with a capacity of 4, 6, 8, 12, 18, 24, 36 and 54 modules with transparent window.

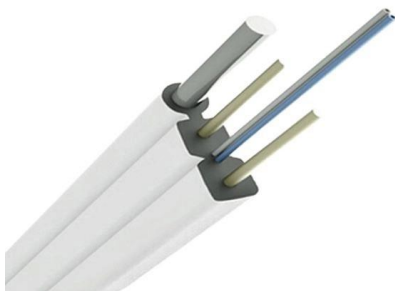
[Contact Us](#)



### Lighting Distribution Boxes for Power Control

These boxes seamlessly integrate with various Lighting Accessories and support complete Lighting Distribution Systems, including Marshalling Boxes and Lighting Control Modules. They're perfectly

[Contact Us](#)



### Electrical Distribution Box Design Guide

The document provides details for designing the electrical distribution box and circuits for a residence. It includes specifications for the main circuit breaker such

[Contact Us](#)



### Distribution Box

220 Power Distribution Box 220 Power Distribution Box, also called power and lighting distribution control box. Most of them are closed vertical installation. Due

[Contact Us](#)



### Edwards Signaling Outlet Box Attachment for 105 Series

Edwards Signaling 105 Series Beacons, Flashing Halogen Light Module, Amber, 24V AC 50/60 Hz, 0.8 A 105FINHA-N5 , ED-105FNHAG5 Sign In for Dealer Pricing

[Contact Us](#)



### Lighting Distribution Box: Safety, Efficiency, and Convenience in

Discover the essential functions and benefits of the lighting distribution box for optimized electrical lighting. Enhance safety, save on energy costs, and simplify installation with our advanced lighting

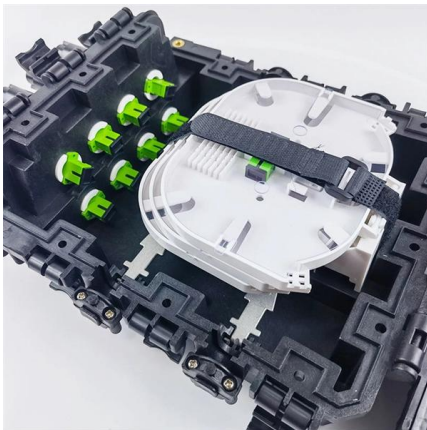
[Contact Us](#)





: CAT. NO.- JB/105 : FLAME PROOF (EX-d), Gas Group IIA & As per IS/IEC 60079-1 : 2014 : WEATHER PROOF IP - 66 AS PER IS/IEC (Reaffirmed 2014) : Ex db IIA,IIB T6 Gb ( EX tb/tc IIIC

[Contact Us](#)



## BOX

Dimensions: 1 module: 499 / 515 x 103 x 105 mm  
2 modules: 960 / 978 x 103 x 105 mm  
Illuminant Type: 1 or 2 Eco modules each with 14 LEDs or 28 LEDs Colour

[Contact Us](#)

## Distribution boxes

After connecting the electrical lines to the terminals, the distribution box must be filled with the sealing compound supplied. You can find the complete technical data for

[Contact Us](#)



## Distribution box , PDF

This document provides specifications for various types of plastic distribution boxes, including their dimensions and features. It describes HA, HK, and LGD series

[Contact Us](#)





## MNS® Low Voltage Distribution Board and Power Cabinet

Features ABB distribution board and power Cabinet conform to GB7251.3-2006. Product includes distribution board, lighting control panel, metering panel, and power cabinet., They are suitable for

[Contact Us](#)



## CF-105 EN

Inside, it has a fuse connection base for four cylindrical 10×38 T0 fuse cartridges and four 6 mm 2 branch terminals, making it possible to protect two light fittings with a

[Contact Us](#)

## ORDERING CODE DX DIMENSIONS

DESCRIPTION ALPHABET's DX Compact remote driver box holds up to 5 LED drivers with maximum 20W output each or 3 drivers with a maximum 50W each. It solves many application issues for

[Contact Us](#)



## Electrical Box Dimensions: Find the Right Size for Any

Choosing the correct electrical box dimensions is essential for safe wiring, code compliance, and long-term reliability. Whether you are installing

[Contact Us](#)





## Difference between lighting distribution box and power

Power distribution box: the main load is power or lighting and power used together, as well as the large capacity distribution box that provides power for lighting load

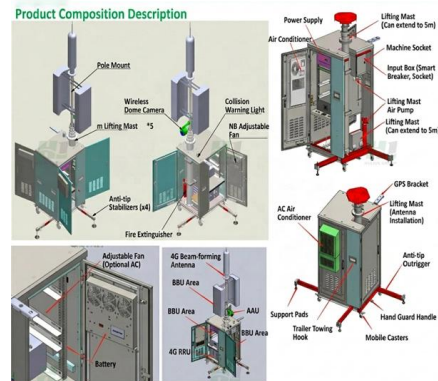
[Contact Us](#)



## Understanding the PZ30 Lighting Distribution Box: A

Discover the essential features and benefits of the PZ30 Lighting Distribution Box in this comprehensive guide. Learn about its applications and

[Contact Us](#)



## MNS® Low Voltage Distribution Board and Power Cabinet

Each motor circuit is equipped with two lights, two buttons, and one changeover switch; one contactor is less than A50. One thermal overload relay; and there are 20 terminals. The dimensions should be

[Contact Us](#)



## forum.cartridgecollectors

Hier sollte eine Beschreibung angezeigt werden, diese Seite lässt dies jedoch nicht zu.

[Contact Us](#)



## DISTRIBUTION BOARDS CATALOG

Unique box wrapper profile developed using latest technologies and simulation software ensures the strongest resistance to high crushing forces. This profile helps in preventing the twisting of the box

[Contact Us](#)



### G-7525\_rev

Leviton's Distribution Equipment is designed for use in theaters, television studios and other spaces where the distribution of power to lighting circuits is required. Our Distribution Equipment offers

[Contact Us](#)



### Street Light Electrical Junction Boxes , Sanlec Automation

Sintex has an entire array of electrical security equipment that comprises of junction boxes, meter boxes, SMC distribution boxes and boards, FRP devices, LCS,

[Contact Us](#)



2. Imported design is convenient for expansion.

The design of two inlets saves space and allows for rear line entry.

### LV Sub Mains Distribution Board (SMDB)

1. Validity This manual was produced in March 2021 and applies to the LV SMDB range.

[Contact Us](#)





## Size, Weight and Wattage of an LED Light box

We will calculate the size of the light box you need based on your graphic dimension, or if you have any outside dimensions in mind, we will confirm what size your

[Contact Us](#)



## Distribution Box

Plastic Electrical Box, also known as a consumer control unit or electricity control unit. It is a device that is a type of distribution board that helps in protecting

[Contact Us](#)

## Contact Us

---

For datasheets, pricing, or custom fiber access solutions, please visit:  
<https://frindel.es>