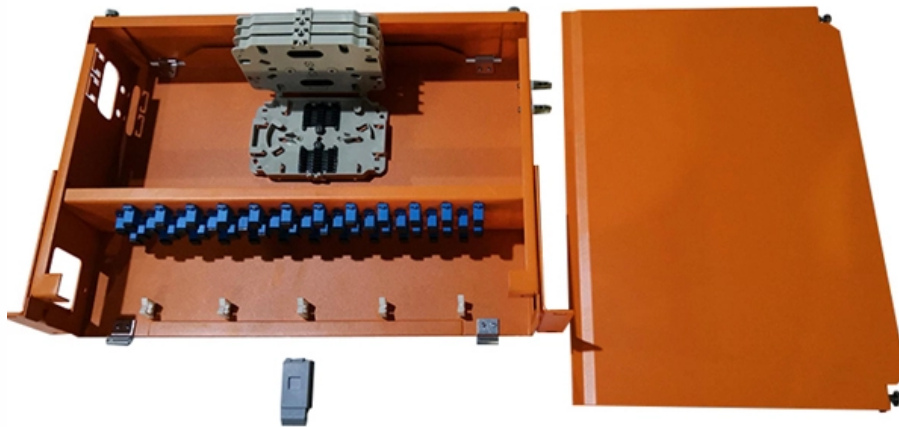


103 Distribution Box Specifications





Overview

Distributor box, application: Standard, connection method: M8 socket Metal, number of slots: 10, number of positions: 3, coding: A, slot assignment: single, status display: yes, PNP; master cable connection: M16 plug connection 90°, shielding: no

Distributor box, application: Standard, connection method: M8 socket Metal, number of slots: 10, number of positions: 3, coding: A, slot assignment: single, status display: yes, PNP; master cable connection: M16 plug connection 90°, shielding: no

The Relevance Inspector will open in the Coveo Administration Console. Leviton's The Box™ is rated 50A 125/250 Volt with six (6) weather-resistant NEMA 5-20R straight blade single GFCI protected receptacles, one (1) NEMA L6-30R locking non-GFCI protected receptacle, one (1) non-GFCI protected 50A. For installation flexibility, the Liebert GXT4 UPS's (5kVA to 10kVA) allow you to choose from several different input/output power wiring configurations made possible by the use of removable power distribution boxes (PODs) that simply plug into the rear of the UPS. Optional Parts : Multifunction Meter □Led Indicator □Adjustable Earth Leakage Relay□Ventilation Fan □Ventilation Valve □EmergencyPush Button. This marine-specific distribution box, serving as the core equipment for shipboard power.



103 Distribution Box Specifications



Distribution Box Installation Specifications , PDF

The document specifies the quantities and descriptions of distribution boxes, cables, and an online UPS system. It includes 6 items of distribution boxes for control

[Contact Us](#)

25/63/100 KVA LT Distribution Box Specs

This document specifies requirements for 25/63/100 KVA low voltage distribution boxes. The boxes will include an incoming disconnect switch and outgoing porcelain fuse units to protect and control low

[Contact Us](#)



DISTRIBUTION BOX

Technical Specification for Distribution Box (DB)- Accessory for LT AB Cables 1. SCOPE 1.1 This Distribution Box (DB) should be made up of Weather & Moisture Proof Outer box with Spring loaded

[Contact Us](#)



Distribution box catalogue , PDF

This document provides specifications for various distribution boxes including dimensions, mounting sizes, and number of ways. It includes specifications for

[Contact Us](#)



Leviton Power Distribution Box

Leviton Power Distribution Boxes deliver portable power when and where you need it. Built to withstand the heavy abuse in typical construction sites, entertainment venues, or anywhere

[Contact Us](#)



Distribution Box

Metal Distribution Box Features Continuously welded seams Foam-in-place seamless gasket 120-degree opening heavy-duty industrial hinges IP66 protection rating against dust and water according

[Contact Us](#)



SELECT YOUR DISTRIBUTION SYSTEM

Distribution is an essential function for the electrical panels, as well as for control and circuit protection. As well as purely technical factors (intensity, number of outputs, etc.), the choice of a distribution

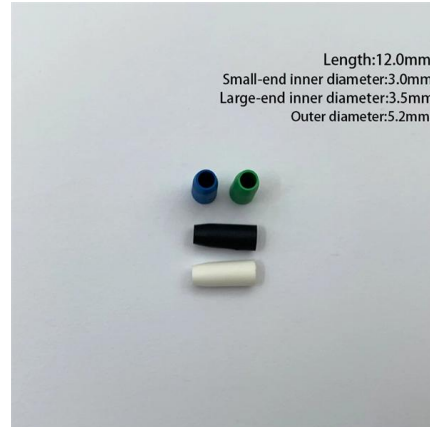
[Contact Us](#)



881e, Low voltage distribution, type 81, 84 and 86, type D103, acc. to

Distribution systems in framework design (type 81) are preferentially used in non-accessible transformer substations and in closed electrical operating areas. DRIESCHER low voltage distribution systems

[Contact Us](#)



BEL PRODUCTS B103 Splitter Troughs and Boxes , WESCO Canada

Splitter Troughs and Boxes: Type - Distribution Splitter Box; Enclosure Material - Steel; Enclosure Material Thickness - 16 Gauge; Enclosure Finish - Gray; Enclosure Rating - NEMA 1; Rating - Volts -

[Contact Us](#)



L.T. Distribution Box Specification

The document provides specifications for low voltage distribution boxes used with distribution transformers of various ratings. Key details include: 1) The boxes will

[Contact Us](#)



PD2-103 Power Distribution Box (POD), 8-10kVA UPS

For installation flexibility, the Liebert GXT4 UPS's (5kVA to 10kVA) allow you to

[Contact Us](#)





SACB-10/3-L-M16-M8 HD

Safety in the field, thanks to molded housing and high degree of protection. Convenient: increased machine availability thanks to quick and easy diagnostics.

[Contact Us](#)



Distribution Boards & Consumer Units

Distribution boards, together with modular ABB system pro M Compact protection devices and Modular Din Rail Components, can be used for many applications in electrical building installation. Solutions

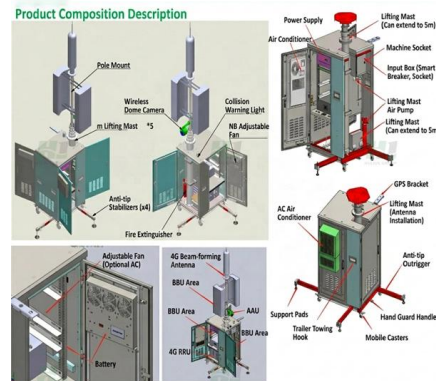
[Contact Us](#)



Distribution Box and Selection Guide

Distribution Box Selection Guide This guide provides information on how to select the appropriate Distribution Box for Electric project. If you have any

[Contact Us](#)



Outdoor Electrical Distribution Box Specifications: NEC

Complete specification guide for outdoor electrical distribution boxes covering NEC Article 312 requirements, NEMA ratings, sizing calculations, and

[Contact Us](#)

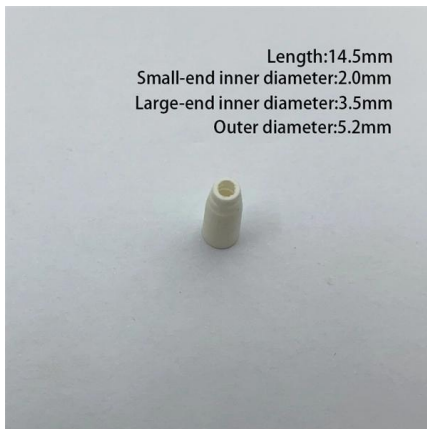




Leviton® PB103 , The Reynolds Company

The Bo® PB103 Box Mount Portable Temporary Power Distribution Box, 125/250 VAC, 50 A, 3 Poles, 4 Wires

[Contact Us](#)



Distribution Box Installation Specifications , PDF

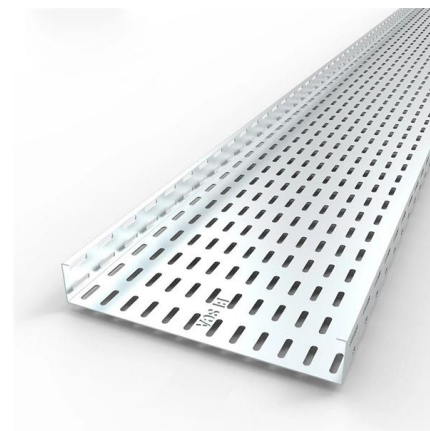
Distribution Box Installation Specifications The document specifies the quantities and descriptions of distribution boxes, cables, and an online UPS system. It includes

[Contact Us](#)

**SPECIFICATION NO:
STORES/DB/Rural/SMC/2011/04**

SCOPE: Specification covers the design, manufacture, testing at works and supply of Distribution Boxes made out of thermosetting plastic i.e. glass reinforced polyester sheet moulding compound (S3

[Contact Us](#)



Distribution Boxes

Distribution Boxes are available in varied specifications meeting the specific requirements of the clients. Additionally, customers are eased with the availability

[Contact Us](#)





SACB-10/3-L-M16-M8 HD

Reduce mechanical loads upstream of the connector, e.g., by using cable ties. Unused slots are to be sealed off prior to commissioning. Suitable sealing elements are to be found under "Accessories".

[Contact Us](#)



Distribution Boxes Technical Data

DC Micro Style Distribution Boxes Four-pin, One Signal per Port Cable Connector Distribution Box Eight-port DC Micro Distribution Box Specifications

[Contact Us](#)

Maharashtra State Electricity Distribution Company Limited

Each distribution box shall have 6 nos. of single-pole MCCBs in 63 KVA /100 KVA Box and 9 nos of single-pole MCCBs in 200 KVA box to protect outgoing circuits. MCCB shall be conforming to this

[Contact Us](#)



XY-BOX-103 / Industrial Socket Distribution Box-Industrial Socket

Built with a highly corrosion-resistant material and a robust enclosure, it features a multi-layered protective structure to ensure safe and stable power distribution.

[Contact Us](#)

Distribution Box - Astryd Power Pvt. Ltd.



This specification covers the design, manufacture, testing at works, and supply of Distribution Boxes made out of CRCA MS (cold-rolled close annealed mild steel). These distribution boxes are used for

[Contact Us](#)



Contact Us

For datasheets, pricing, or custom fiber access solutions, please visit:
<https://frindel.es>