

# 100mm wide cable tray support





## 100mm wide cable tray support

---



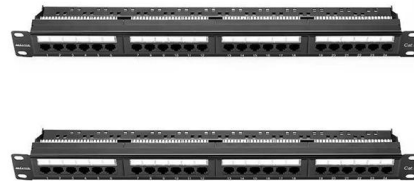
### **Cablofil SASDC Hot Dip Glavanised Cable Tray Suspension Hanger**

Hot dip galvanised cable tray suspension hanger for screwless ceiling mounting. Suits Cablofil trays 100-150 mm wide with M8 threaded suspension and high corrosion resistance.

[Contact Us](#)

### **Verified Supplier Cable Tray 400mm Hot-Dipped Galvanized Material**

In data centres, cable trays organize and support large volumes of electrical and communication cabling. They prevent the cables from sagging, becoming damaged, or losing functionality. 400mm wide



[Contact Us](#)



### **Cablofil CG100GS Pre-Galvanised Steel EDF Channel 100mm**

Cablofil CG100GS cantilever bracket provides wall mounted support for EDF channel cable support systems, enabling secure installation of 100 mm wide cable trays.

[Contact Us](#)

### **Cablofil FASLOCK AUTO Zinc Nickel Bend Connector for trays 100 to**

Zinc Nickel steel small bend connector for rapid joining of wire mesh cable trays. Horizontal hinged joint supports flexible routing for 100-200 mm trays, providing corrosion resistant, halogen free performance.



### **100mm Stand Off Bracket for Cable Tray (Sold in 1's)**

Stand off brackets used to support and secure either cable tray or basket tray installations  
Manufactured from continuously hot dipped zinc coated low carbon

[Contact Us](#)



### **Fiberglass (FRP) Cable Tray for Extreme Conditions**

Enduro cable tray and cable ladder sets the industry standard for high-quality fiberglass cable tray. Our FRP cable tray is extremely durable.

[Contact Us](#)



### **100mm Cable Tray Trapeze Support Bracket (HDG) - 500mm Drop**

The 100mm double tier cable tray trapeze bracket is a prefabricated, ready-to-use support designed for securely suspending cable trays up to 100mm wide with a 500mm drop.

[Contact Us](#)

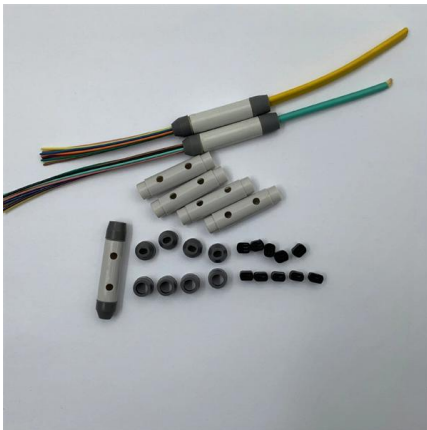




### **Cablofil PA2 Electro-Zinc Steel Wire Cable Tray 54mm Radius Support**

Designed as a longitudinal screw connector for cable support systems, enabling secure and reliable joining of wire mesh trays. Features a horizontal hinged joint for flexible installation in complex

[Contact Us](#)



### **100mm Cable Tray Ceiling Support Bracket**

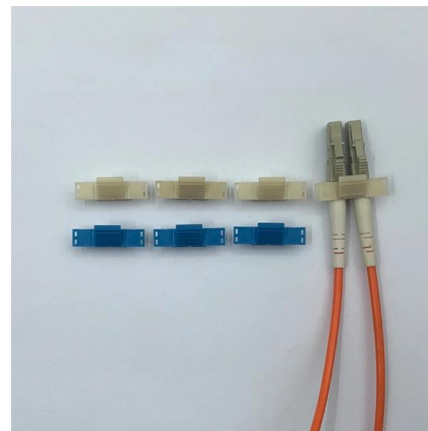
Designed for side loading of cable into tray thus saving both time and effort. Will fit over 41mm wide channel (strut) using a standard bolt and channel nut (zebedee).

[Contact Us](#)

### **Cablofil CEQ100 316L Stainless Steel Wire Cable Tray Central Hanger**

316L stainless steel central hanger bracket for wall mounted support of 50 mm wire cable trays. Fixed 90° configuration delivers high corrosion resistance for demanding environments.

[Contact Us](#)



### **Cable Tray Support**

Wire Mesh Cable Tray WM wire mesh cable tray, for light duty jobs, comes in standard height of 50mm, 100mm and 150mm.

[Contact Us](#)



### **Cable tray SKS-Magic® 60, unperforated FS**

Find out more about Cable tray SKS-Magic® 60, unperforated FS now! OBO - your provider for Cable trays, plug connection.

[Contact Us](#)



### **100mm Cable Tray Trapeze Bracket - HDG Support**

100mm cable tray trapeze bracket (HDG, 300mm drop). Heavy-duty, prefabricated support for cable trays. Fast UK delivery - ready to install.

[Contact Us](#)

### **Swifts 100mm Stand Off Bracket for Cable Tray (Sold in 1's)**

Features 100mm stand off bracket Supplied singly without fastenings Fit vertical or horizontal runs of tray to vertical surfaces, floors and swiftrack channel

[Contact Us](#)



### **Cablofil CU100GC Hot Dip Galvanised Steel 100mm Cantilever Bracket**

Supports cable trays with a width of 100mm, providing precise compatibility for standard cable management. Constructed from hot-dip galvanised steel for enhanced corrosion resistance and long

[Contact Us](#)



### **Cable Tray Trapeze Support Bracket**

This kit offers all the essential components needed to build a robust

[Contact Us](#)



### **Cablofil PA4 Electro-Zinc Steel Wire Cable Tray 105mm Radius Support**

Features Designed as a longitudinal screw connector for cable support systems, ensuring secure and reliable cable management in industrial installations. Features a horizontal hinged joint for flexible

[Contact Us](#)

### **Cablofil Electro-Zinc Steel Cable Tray Radius Support 150mm**

Overview Cablofil electro-zinc steel radius support provides horizontal hinged joint support for wire mesh cable trays in cable support systems, enabling controlled direction changes along tray runs. It is

[Contact Us](#)



### **Swifts Pre-Galvanised Steel Cable Tray Stand-Off Bracket 100mm**

Home Products Cable management - overhead Swifts cable tray Supports Stand-off brackets Swifts Legrand Swifts Pre-Galvanised Steel Cable Tray Stand-Off Bracket 100mm

[Contact Us](#)



## How to Fix Common Cable Management Issues using

Discover common cable management problems and how cable tray accessories effectively solve them to ensure safety and performance.

[Contact Us](#)



### Cablofil R15/100DC Hot Dip Galvanised Steel Wire Cable Tray Stand

Cablofil R15/100DC stand off bracket provides offset support for wire mesh cable trays in cable support systems, enabling spacing from the mounting surface. It is compatible with trays 50 to 200 mm wide

[Contact Us](#)



### Cablofil CG100S6 316L Stainless Steel EDF Channel 100mm

Cablofil CG100S6 cantilever bracket provides wall mounted support for EDF channel cable support systems, enabling secure installation of 100 mm wide cable trays.

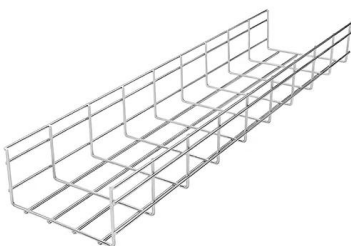
[Contact Us](#)



### Cable Management Systems

Medium duty Unistrut cable tray in various finishes and sizes. Reliable support for cable management systems.

[Contact Us](#)





## Contact Us

---

For datasheets, pricing, or custom fiber access solutions, please visit:  
<https://frindel.es>