

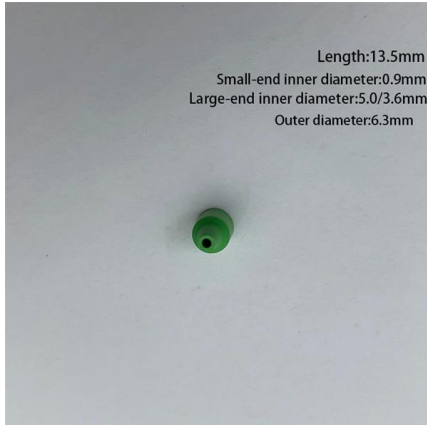
# **100G optical module to RJ45 converter**





## 100G optical module to RJ45 converter

---



### Sfp Modules

1Pair SC/LC 3/5/20KM GBIC 1.25G SFP Module  
Switch Ethernet Fiber Optic Transceiver  
Compatible with TP-link/Mikrotik/Cisco media  
converter PHP490.00 51% Off Voucher save 51%

[Contact Us](#)

### 2X Gigabit SFP Media Converter 4 SFP to 2 RJ45 Transceiver 10/100

2X Gigabit SFP Media Converter 4 SFP to 2 RJ45  
Transceiver 10/100/1000M Fiber Optic EU PLUG  
Description Description & Details Summary  
4x1.25Gbps full-duplex fiber port and 2x1000M  
Ethernet

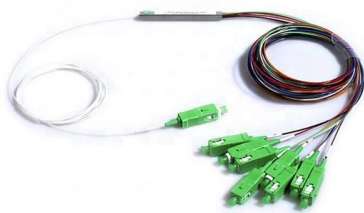
[Contact Us](#)



### 2Pack 10GBase-T RJ45 SFP+ Transceiver, 10Gb SFP

??10GBase-T SFP+ Transceiver?Support 10Gb/s  
data rate, fit for CAT6A/CAT7 cable, copper RJ-45  
connector, reach up to 30m.?NOTE

[Contact Us](#)



### Media Converters (1000+ products) compare price now »

Media Converters are devices that enable the connection of different types of network media, such as copper and fibre optic cables. They help in extending network distances and integrating new



### **100/1000M Optic Media Converter SFP Transceiver Module 1 Slot**

100/1000M Optic Media Converter SFP Transceiver Module 1 Slot to 1.25G RJ45 Port Ethernet Gigabit Fiber Optical Switch (10 PCS)

[Contact Us](#)



### **ipolex Gigabit Multi-Mode LC Fiber to Ethernet Media Converter**

About this item Seamless Conversion of LC Fiber to Copper - This fiber optic to ethernet media converter kit includes a multimode 1000BASE-SX SFP module (850nm), which enables you to

[Contact Us](#)



### **10/100/1000Mb/s Fiber Optic Media Converter Gigabit Ethernet**

OPTICAL PORT: Gigabit Ethernet, SC Standard, 1310nm wavelength, Connect Singlemode Dual Fiber Cable, 40km Transmission Distance RJ45 PORT: 10/100/1000M, Full duplex-flow control, Half duplex

[Contact Us](#)

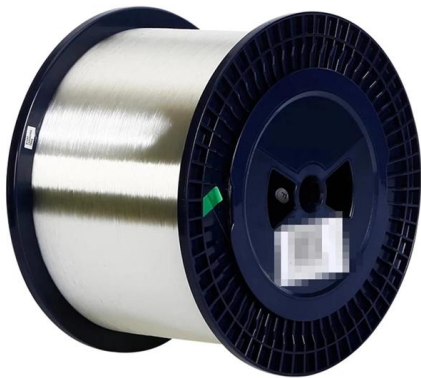




### **MokerLink Gigabit SFP to RJ45 Converter, Fiber to Ethernet**

MokerLink Gigabit SFP to RJ45 Converter, Fiber to Ethernet Media Converter, 10/100/1000Mbps RJ45 Port, 1000Base-SX/LX SFP Slot, Support MiniGBIC Module

[Contact Us](#)



### **Single Mode Fiber Price**

Find reliable single mode fiber prices from top suppliers. Shop high-quality optical cables and accessories for your communication needs. Bulk orders welcome.

[Contact Us](#)

### **40G to 10G/100G to 25G/100G to 100G Converter Modules , Optical**

FS offers 10G/40G, 25G/100G, 100G/100G converter modules (QSFP+ to SFP+, X2 to SFP+). Purchase from nearby warehouses. 30-Day Free Return. Trusted by 260K+ Enterprise Users. Lifetime

[Contact Us](#)



### **Arista Optics Modules and Cables**

Arista's Optical Modules and Cable portfolio offer a wide variety of high-density and low-power 800G (dual 400G), 400G, 200G, 100G, 50G, 40G, 25G, 10G, 1G, and 100M Ethernet connectivity options

[Contact Us](#)

### **RAMEX 10/100/1000 Media Converter**



Introducing the RAMEX 10/100/1000 Media Converter, your solution for bridging the gap between copper RJ45 and fiber optic SFP networks with ease. This versatile converter seamlessly transforms

[Contact Us](#)



### Optical Transceiver Module

Fiber optic module manufacturer, ETU-Link supply full model optical transceivers, including standard 8g/10g/25g/40g/100g sfp+ optical modules and

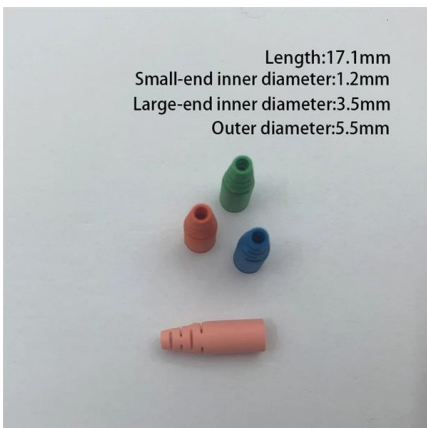
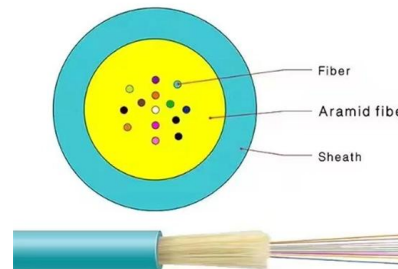
[Contact Us](#)



### Amazon : Fiber Optic Network Interface Card

Discover high-performance fiber optic network interface cards for servers and desktops. Find single and dual port SFP+ adapters with reliable connectivity.

[Contact Us](#)



### RJ45 to Fiber Optic 1G Ethernet Media Converter Mini

The 10/100/1000BASE-T to Fiber Optic media converter mini provides 1000Mbps Gigabit Ethernet copper-to-fiber media conversion, allowing for 10/100/1000Base-T transmission, using multi-mode

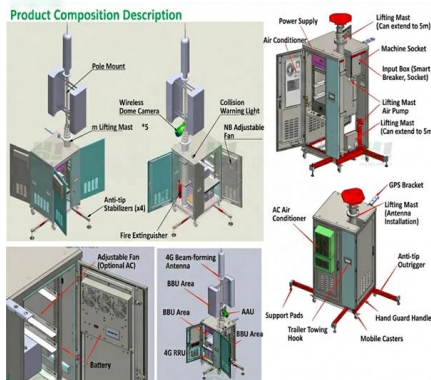
[Contact Us](#)



## High-Quality Gigabit Ethernet SFP to RJ45 Copper

Upgrade your network with our high-quality Gigabit Ethernet SFP to RJ45 copper module. Reliable connectivity for fast data transfer speeds.

[Contact Us](#)



## ipolex 1.25G Gigabit Ethernet SFP to RJ45 Fiber Media

ipolex 1.25G Gigabit Ethernet SFP to RJ45 Fiber Media Converter, 10/100/1000M RJ45 to 1000M SFP Slot, Fiber to Ethernet Converter, Supports 1000BASE-SX/LX LC Transceiver Module

[Contact Us](#)

## Gigabit Fiber to RJ45 Ethernet Media Converter Dongle, Optical

FIBER TO ETHERNET MEDIA CONVERTER: Converts Gigabit fiber to RJ45 copper in a compact form factor; No SFP/Cat6 cables required; Conveniently PoE powered (802.3af or higher); Dimensions:

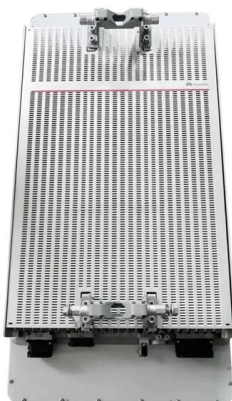
[Contact Us](#)



## Gigabit Fiber to RJ45 Ethernet Media Converter Dongle,

Gigabit Fiber to RJ45 Ethernet Media Converter Dongle, Optical Singlemode 10km/Multimode 800m, PoE Powered, Compact Design, Metal Housing, Micro

[Contact Us](#)





### SFP+ to RJ45 Adapter

SFP+ to RJ45 transceiver module that supports 10G connections up to 100 m.

[Contact Us](#)



### 10/100/1000Base-T RJ45 to 1000Base-FX SFP Fiber

10/100/1000Base-T RJ45 (100m/328ft) Gigabit Ethernet to 1000Base-FX Open SFP Fiber Media Converter (Distance depending on SFP module) The MC-GSA11-L is

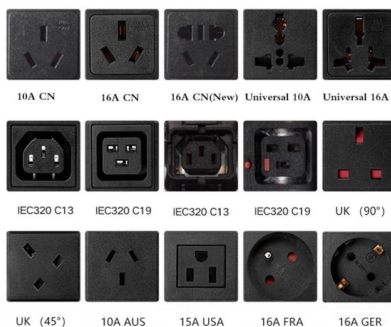
[Contact Us](#)

### QSFPTTEK Gigabit Ethernet Media Converter with SFP Module,

About This 1x Multimode Dual LC fiber Optical Port: 1.25Gbps, 850nm wavelength, support Gigabit Ethernet; 1x RJ45 Port: 10M/100M/1000M, supports Full/Half Duplex auto-negotiation and MDI/MDIX



[Contact Us](#)



### 10G Single-Mode Optical Module

SFP+ transceiver that supports 10G connections up to 10 km using single-mode fiber with a duplex LC UPC connector.

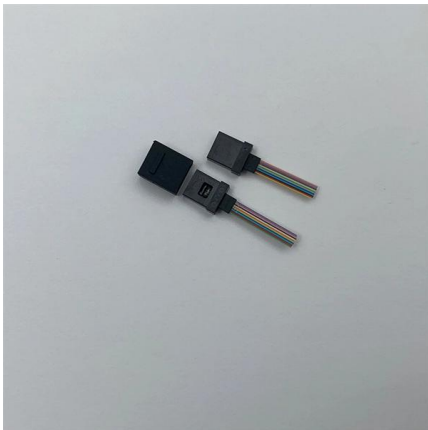
[Contact Us](#)



### **100G LR4 Single-Mode Optical Module**

QSFP28 transceiver that supports 100G connections up to 10 km using single-mode fiber with a duplex LC UPC connector.

[Contact Us](#)



### **Gigabit Ethernet Module: SFP to RJ45 Solution**

The SFP to RJ45 solution involves inserting a Gigabit Ethernet module into the Gigabit optical port of a device to connect it to an Ethernet cable, which is then connected to the electrical

[Contact Us](#)

### **Optical Converter Module 100Gbps 100G-10KM-OLT**

The 100G-10KM-OLT-QSFP28 Converter Module is designed to operate in high-performance networks, supporting transfer rates of 100 Gbps using a single-mode

[Contact Us](#)



### **10/100/1000Base-T RJ45 to 1000Base-FX SFP Fiber**

10/100/1000Base-T RJ45 (100m/328ft) Gigabit Ethernet to 1000Base-FX Open SFP Fiber Media Converter (Distance depending on SFP module) Manufacturer,

[Contact Us](#)



## Contact Us

---

For datasheets, pricing, or custom fiber access solutions, please visit:  
<https://frindel.es>