

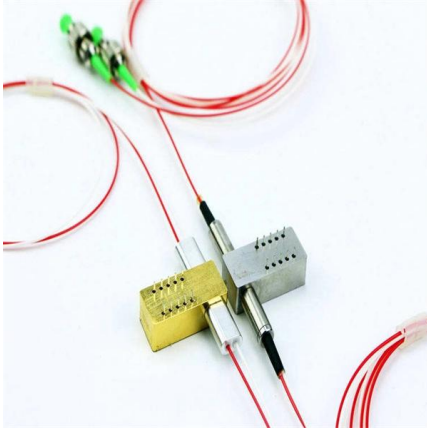
# **10 Gigabit Single-Mode Dual-Fiber 40km 1310nm Huawei Optical Module**





## 10 Gigabit Single-Mode Dual-Fiber 40km 1310nm Huawei Optical Module

---



### **fiber transceiver single mode , Newegg**

Intellinet Gigabit Fiber WDM Bi-Directional SFP Optical Transceiver Module, 1000Base-LX (LC) Single-Mode Port, 10 km (6.2 mi.), WDM (RX1310/TX1550) Device Type: Transceiver

[Contact Us](#)

### **SFP-10G-ER-1310**

Huawei compatible SFP-10G-ER-1310 (02311RLX) is SFP+ (Small Form factor Pluggable) Transceiver, operating over Double Fiber Single-Mode Fiber (SMF) optical cable.

[Contact Us](#)



### **Huawei 02311RLX Datasheet**

If the SFP-10G-ER-1310 is connected to a 10Gbase-ER standard optical module (1550nm, 10GE, 40km), the maximum transmission distance is only 20km due to different specifications such as wavelength

[Contact Us](#)

### **10G SFP+ ER Optical Transceiver Module , FiberMall**

10G SFP+ ER Module is designed for optical communication applications and

[Contact Us](#)



### **Gigabit Single-Mode Dual Fiber RTXM191-450 1.25G 1310NM 40KM Optical Module**

Transmission method: optical fiber transmission  
Emission wavelength: 1310nm Transmit power: 5  
Voltage input: 3.3 Size: 33 Unit weight: 0.025kg  
product name: Fiber optic module

[Contact Us](#)



### **Optical Transceiver Module**

400G QSFP-DD LR4 10km LC Optical  
Transceiver? The 400G QSFP-DD LR4  
transceiver is a high-performance optical module  
designed for long-distance 400

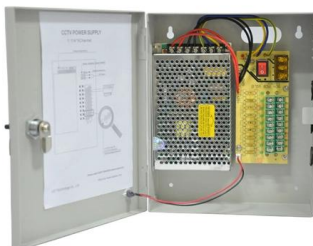
[Contact Us](#)



### **10G SFP+ ER 1310nm 40KM**

The STC-10G-ER is an extended reach 10G SFP+  
optical transceiver designed for long-distance  
single-mode fiber (SMF) applications. Operating  
at a wavelength of 1310nm, this high-  
performance module

[Contact Us](#)





## 2Pair Gigabit Fiber SFP Module 1.25G Single Mode 40km LC 1310nm

2Pair Gigabit Fiber SFP Module 1.25G Single Mode 40km LC 1310nm/1550nm Compatible with Multiple Types of Switches Description The Gigabit Fiber SFP Module comes with a personalized steel ring,

[Contact Us](#)



## Spectral Ranges in Single-Mode Fiber-Optic Communication

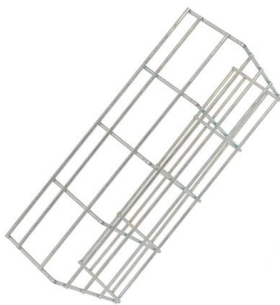
Learn about spectral ranges in single-mode fiber-optic communication. Gain insights into their importance for high-speed data transfer and network reliability.

[Contact Us](#)

## Huawei sfp 1.25g 1310nm 10km

Discover Huawei SFP 1.25G 1310nm 10km modules for fiber optic networks. Features LC duplex, SMF, 0-70°C operation, CE/RoHS compliance.

[Contact Us](#)



## 100G QSFP28 Optical Transceiver Modules , FiberMall

FiberMall offers 100G QSFP28 Optical Transceiver Modules provides 100 Gigabit Ethernet connectivity for up to 100km transmission with the MPO/LC connector.

[Contact Us](#)



## Terabit Ethernet

Terabit Ethernet (TbE) is Ethernet with speeds above 100 Gigabit Ethernet. The 400 Gigabit Ethernet (400G, 400GbE) and 200 Gigabit Ethernet (200G, 200GbE) standard developed by the IEEE

[Contact Us](#)



### 10G SFP+ ER SMF 1310nm 40km Transceiver Module

This Generic SFP-10G-ER1310 compatible SFP+ transceiver supports 10GBASE-ER1310 and 10GBase-EW1310 throughput up to 40km over single-mode fiber

[Contact Us](#)

### The Ultimate Guide to SFP Modules (2026): Types,

Confused by SFP vs SFP+? Read the definitive 2026 guide on SFP modules. We explain Single Mode vs Multimode, DDM diagnostics, and how to choose the right

[Contact Us](#)



### Generic 10GBASE-ER SFP+ Transceiver Module 1310nm 40km

Featuring low power consumption, high speed, this 10G SFP+ transceiver is ideal for data center, 10G Ethernet and Fibre Channel etc. Minimum cabling distance for ER modules is 2m, according to the

[Contact Us](#)

## Gigabit Ethernet



Gigabit Ethernet was the next iteration, increasing the speed to 1000 Mbit/s. The initial standard for Gigabit Ethernet was produced by the IEEE in June 1998 as

[Contact Us](#)



### **SFP-10G-ER40 10GBASE-ER SFP+ Transceiver**

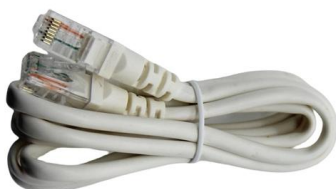
High-performance 10GBASE-ER SFP+ optical transceiver. Delivers reliable 10 Gigabit Ethernet connectivity up to 40 kilometers over single-mode fiber (SMF)

[Contact Us](#)

### **SFP+ singlemode 1310nm Transceiver**

Optische SFP+ Transceiver Module singlemode 1310nm für 10 Gigabit Ethernet sind für kurze bis mittlere Übertragungsstrecken (2km bis 40km) über singlemode LWL Glasfaser geeignet. Wir liefern

[Contact Us](#)



### **Arista XVR-10084-20 25GBASE-LR SFP Up to 10 km Over Refurbished**

Designed for enterprise networks, cloud computing environments, hyperscale data centers, and carrier-grade infrastructure, this optical module delivers stable 25 Gigabit Ethernet connectivity over single

[Contact Us](#)

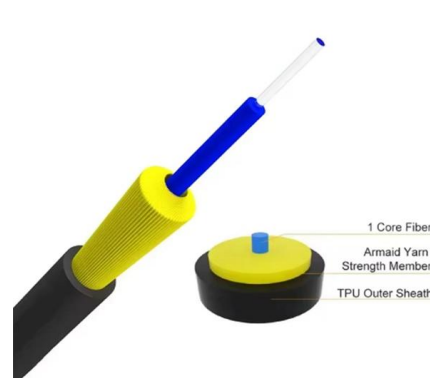
### **QSFP+ 40G Optical Transceivers, 40G Fiber**



## Optic Transceiver

40G QSFP+ BIDI optical transceiver module is a pluggable optical transceiver with a duplex LC connector interface for short-reach data communication and interconnect applications using Multi

[Contact Us](#)



## Alcatel-Lucent OmniSwitch 6870

Alcatel-Lucent OmniSwitch 6870 models The OmniSwitch 6870 family offers customers an extensive selection of fixed-configuration switches with up to 95 watts of PoE per port and power supply

[Contact Us](#)

## Huawei SFP-10G-ER40 Compatible 10Gb SFP

This high-quality Huawei SFP-10G-ER40 Compatible 10GBASE-ER SFP+ 1310nm 40km DOM Transceiver. A cost-effective solution that provides high bandwidth

[Contact Us](#)



## Small Form-factor Pluggable

Small Form-factor Pluggable Small Form-factor Pluggable connected to a pair of fiber-optic cables Small Form-factor Pluggable (SFP) is a compact, hot-pluggable

[Contact Us](#)



## Contact Us

---

For datasheets, pricing, or custom fiber access solutions, please visit:  
<https://frindel.es>